

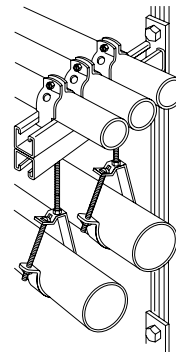
## Wall and Support Brackets

Kindorf® wall brackets provide a ready-made shelving arrangement that can be attached quickly to the supporting channels.

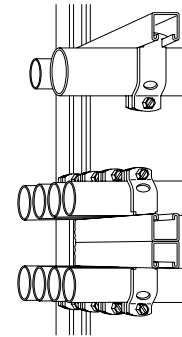
Utilizing the built-in advantages of the Kindorf® Channel, the support bracket members allow a great deal of flexibility in meeting the structural framing needs.

Axle supports and a variety of wall brackets all adapt to the standard Kindorf® channel and allow additional flexibility in the support of cables, conduit, pipe and other equipment.

The application of axle supports and bracket members can be made on either the continuous slot of the channel or the pre-punched hole side. Utilizing the 1½" hole spacing, greater adaptability is attained with a minimum of fittings.



F-721 Wall bracket hangs and supports pipe runs.



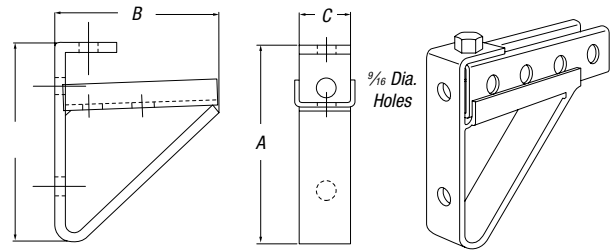
Conduit installations supported above and below by F-721 wall bracket.

### F-715 Wall Bracket

Mounts on Kindorf® channel or directly to wall. F-715 bracket supports 1½" or 1⅝" channels. Brackets allow for a variety of support channel lengths. The continuous tray on brackets prevent lateral movement of supported channels. Support channels can be fastened from top, bottom or both.

CAT. NO.	DIMENSIONS (IN.)			WT. LBS./C.
	A	B	C	
F-715	5 <sup>27</sup> / <sub>32</sub>	4 <sup>9</sup> / <sub>16</sub>	1½	163

Galv-Krom® finish.

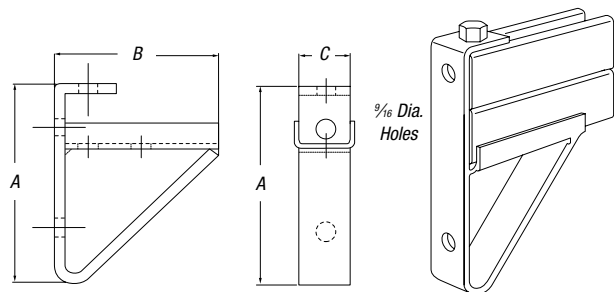


### F-716-3 Wall Bracket

Mounts on Kindorf® channel or directly to wall. F-716-3 bracket supports 3" deep or back-to-back channels. Brackets allow for a variety of support channel lengths. The continuous tray on brackets prevent lateral movement of supported channels. Support channels can be fastened from top, bottom or both.

CAT. NO.	DIMENSIONS (IN.)			WT. LBS./C.
	A	B	C	
F-716-3	7 <sup>1</sup> / <sub>32</sub>	4 <sup>9</sup> / <sub>16</sub>	1½	179

Galv-Krom® finish.



### F-720 Wall Bracket

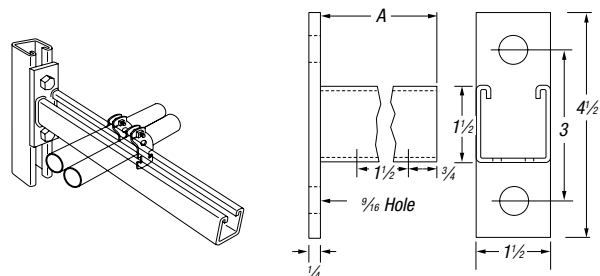
Mounts on Kindorf® channel, concrete inserts or directly to wall. Continuous-slot accepts C-105, C-106 and C-107 series pipe straps. Bracket is 12-gauge steel, 1½" x 1½" channel welded to a ¼" back plate. May be attached to either the continuous slot side or pre-punched holes in back or side of Kindorf® channel.

CAT. NO.	DIM. A (IN.)	END LOAD RATING LBS.*	WT. LBS./C
F720 6**	6	600	132
F-720-9**	9	450	155
F-720-12**	12	300	200
F-720-18	18	200	275
F-720-24**	24	150	350

\* Safety factor of 3.

\*\* This product available in green & hot-dipped galvanized.

Standard finish: Galv-Krom®.



1-800-453-1692

[www.aboveboardelectronics.com](http://www.aboveboardelectronics.com)

## Wall and Support Brackets

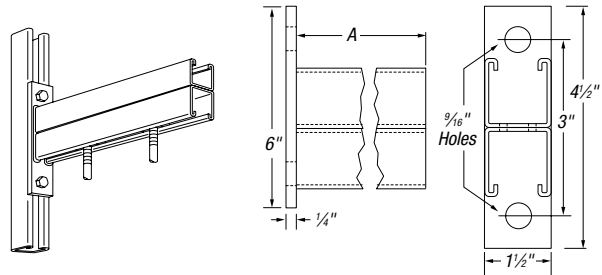
### F-721 Wall Bracket

Double channel to provide continuous slot for both top and bottom mounting. 12-ga. steel, ¼-inch back plate. May be attached to either the continuous slot side or pre-punched holes in back or side of Kindorf® channel.

CAT. NO.	DIM. A (IN.)	END LOAD RATING LBS.*	WT. LBS./C
F721 18	18	300	568
F-721-24	24	225	736
F-721-30	30	180	904
F-721-36	36	150	1072

\* Safety factor of 3.

Standard finish: Galv-Krom®.



### F-735 and F-736 Axle Supports

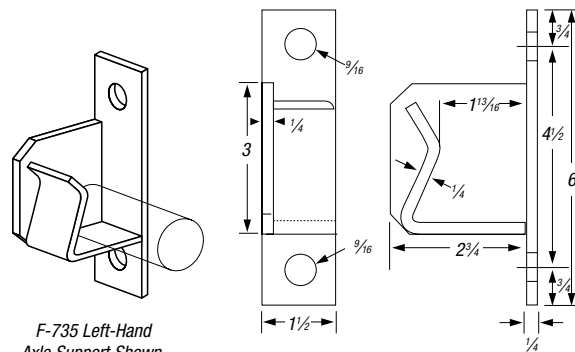
For use on storage racks constructed on Kindorf® channel. Supports reels of electrical cables, wire rope, chain and other materials. Left-hand axle support illustrated. F-736 identical except right hand. May be attached to either the continuous slot side or pre-punched holes in back or side of Kindorf® channel.

CAT NO.	DESCRIPTION	WT. LBS./C
F-735	Left Hand	165
F-736	Right Hand	165

Assembly requires two B-910-1/2 steel nuts and two H-113-B bolts.

Accepts up to 1 ¼" steel bar or pipe for axle.

Galv-Krom® finish.



F-735 Left-Hand Axle Support Shown.

### F-737 Double Axle Support

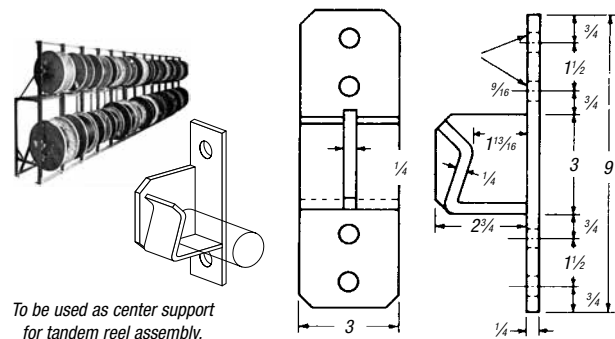
Typical Kindorf® Space-Saver reel rack. Kindorf® reel racks are easy to build, exceptionally strong and economical. Racks adjust easily to accommodate a variety of reel sizes. No special tools needed.

CAT. NO.	WT. LBS./C
F-737	335

Assembly requires four B-910-1/2 steel nuts and four H-113-B bolts.

To be used with F-735 and F-736. ¼" steel.

Galv-Krom® finish.



To be used as center support for tandem reel assembly.

### F-739 Telephone Cable Hook

Cantilever-type cable hooks fit into 'T' slot on B-904 channel for rigid, non-slip support. Fast mounting, no hardware to tighten.

CAT. NO.	DIMENSION A (IN.)	WT. LBS./C
F-739-4-1/2	4 ½	81
F-739-7-1/2	7 ½	122
F-739-10-1/2	10 ½	162
F-739-13-1/2	13 ½	198
F-739-18	18	278

Has 9/16" diameter holes on 1 ½" centers to allow for easy tie banding of cables.

Galv-Krom® 12-ga. steel.

