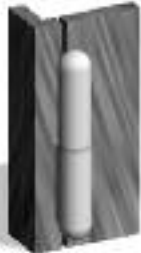


WELD-ON HINGES



Weld-On Hinges are well suited for flush construction.



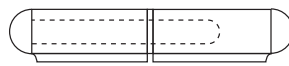
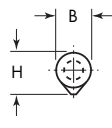
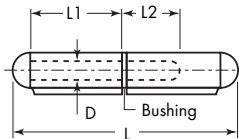
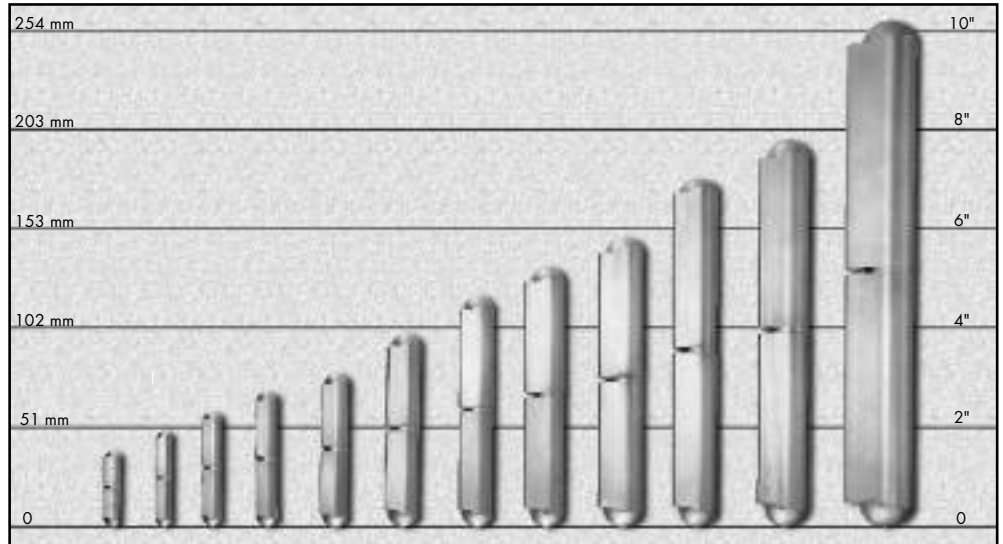
Weld-On Hinges work well in overlapping construction.



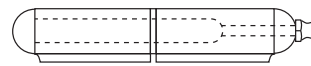
Weld-On Hinges are well suited for gate construction.

The Guden Weld-On Hinge is an attractive new alternative for your hinge needs. It offers continuous, smooth operation and eliminates the need for unsightly fasteners and leaves.

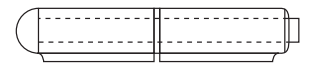
The Weld-On Hinge is ideal for a wide range of applications, everything from electrical and tool boxes to machinery doors and air-conditioning enclosures.



Fixed Pin



Fixed Pin with Grease Fitting



Removable Pin

Steel/ steel pin	Steel/ brass pin	Steel/steel pin grease fitting	Steel/brass pin grease fitting	Steel/STS pin grease fitting	Steel/steel loose pin	Stainless	Alum./STS pin	Steel/STS pin	LengthThk. Dia.			Pin Dia.		
									L	H	B	L1	L2	D
PSWM015FP	PBWM015FP	-	-	-	-	SSWM015FP	ASWM015FP	-	1.58	0.37	0.315	0.63	0.58	0.197
PSWM020FP	PBWM020FP	-	-	-	PSWM020RP	SSWM020FP	ASWM020FP	-	1.97	0.38	0.315	0.79	0.58	0.197
PSWM024FP	PBWM024FP	-	-	-	-	SSWM024FP	ASWM024FP	-	2.36	0.46	0.394	0.93	0.70	0.236
PSWM028FP	PBWM028FP	-	-	-	-	SSWM028FP	ASWM028FP	-	2.76	0.51	0.450	1.13	0.85	0.236
PSWM032FP	PBWM032FP	PSWM032FP-GF	PBWM032FP-GF	-	PSWM032RP	SSWM032FP	ASWM032FP	-	3.15	0.61	0.510	1.29	0.85	0.315
PSWM040FP	PBWM040FP	PSWM040FP-GF	PBWM040FP-GF	-	PSWM040RP	SSWM040FP	ASWM040FP	-	3.94	0.77	0.630	1.63	1.20	0.394
PSWM048FP	PBWM048FP	PSWM048FP-GF	PBWM048FP-GF	PSWM048FSP-GF	-	SSWM048FP	-	-	4.75	0.76	0.625	2.04	1.30	0.394
PSWM052FP	PBWM052FP	-	-	-	-	SSWM052FP	ASWM052FP	-	5.32	0.90	0.709	2.25	1.50	0.500
PSWM060FP	PBWM060FP	PSWM060FP-GF	PBWM060FP-GF	-	PSWM060RP	SSWM060FP	ASWM060FP	PSWM060FSP	5.91	1.00	0.787	2.54	1.63	0.500
PSWM070FP	PBWM070FP	PSWM070FP-GF	PBWM070FP-GF	-	-	-	ASWM070FP	-	7.09	1.00	0.787	3.15	1.92	0.510
PSWM080FP	PBWM080FP	PSWM080FP-GF	PBWM080FP-GF	-	PSWM080RP	SSWM080FP	-	-	7.87	1.13	0.906	3.44	2.05	0.625
PSWM100FP	PBWM100FP	PSWM100FP-GF	-	-	-	-	-	-	10.27	1.46	1.102	4.60	2.87	0.750

Note: All dimensions are in decimal inches. For steel hinges, bushing is brass. On stainless steel and aluminum hinges, bushing is stainless steel.

