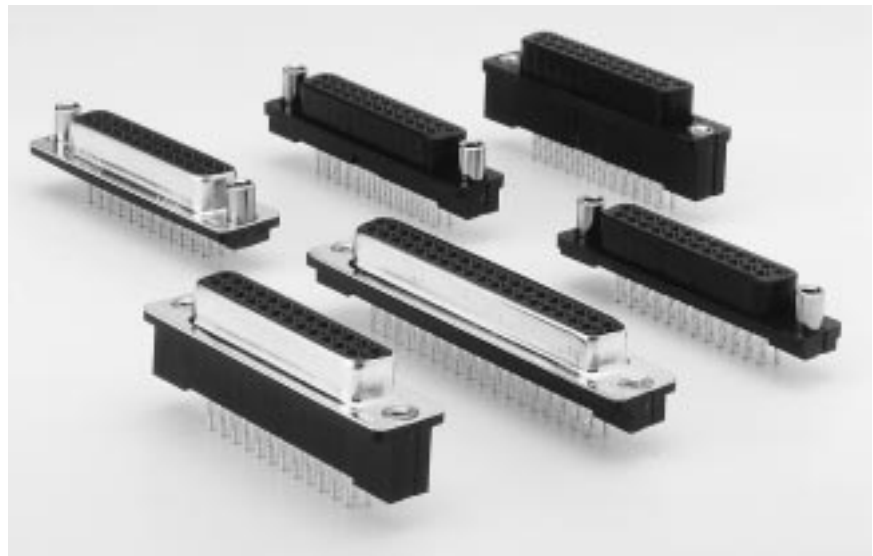


DESCRIPTION/APPLICATION

The Press-Fit D-Subminiature connector series are used with press fit backplane boards. The compliant tail section provides a gas tight seal between contact tail and plated thru hole, thus eliminating the need to solder. These connectors can be shipped with factory installed covers or with separately packaged caps which can be easily snapped onto the bases. Available positions are 9, 15, 25 and 37.

DESIGN ADVANTAGES

- Large, closed entry lead-in provides easy mating; allows male plug to be off true position as much as .040" and still mate. Corner radii around "D" outline also aid pin alignment.
- Selective gold plating permits precise placement of valuable gold only where needed.
- Mass insertion heads for installing multiple connectors onto boards, may be fabricated per customer requirements.
- Force required to install connector onto board shall be no more than 25lb. per pin. Force required to remove pins from board shall be no less than 10lb. per pin.
- The suggested board thickness is .093" to .125".
- Recommended plated thru hole finished diameter is $.040 \pm .003$.
- The insulator cap provides excellent positional control of the male contact pins with respect to female contacts.
- The removable cap allows quick individual pin replacement.
- A variety of plating, mounting, termination and identification options are offered to meet specific user requirements.

PRESS FIT D-SUBMINIATURE

**.480" HEIGHT PROFILE
ALL PLASTIC PRESS FIT
FEMALE RECEPTACLES
FOR PCB MOUNTING**



PHYSICAL PROPERTIES

INSULATION MATERIAL: Glass filled polyester rated UL 94V-0
 COLOR: Black
 CONTACTS: High strength copper alloy
 DURABILITY: Up to 300 insertions and withdrawals without degradation of performance, dependent upon contact plating thickness selected

ELECTRICAL PROPERTIES

OPERATING VOLTAGE: 600 VDC (sea level)
 CURRENT RATING: 5 Amperes
 CONTACT RESISTANCE: 10 milliohms max. @ rated current
 INSULATION RESISTANCE: 5000 megohms minimum
 DIELECTRIC WITHSTANDING VOLTAGE: 1000 VAC minimum

ENVIRONMENTAL PROPERTIES

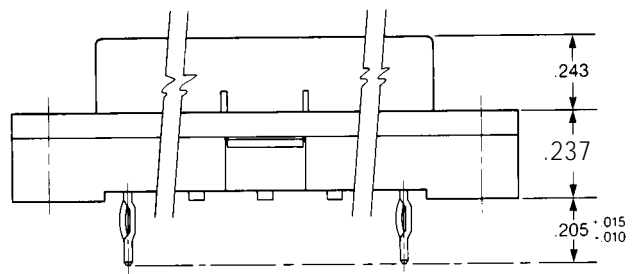
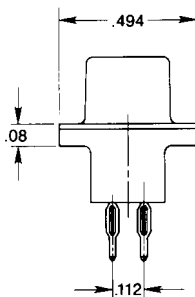
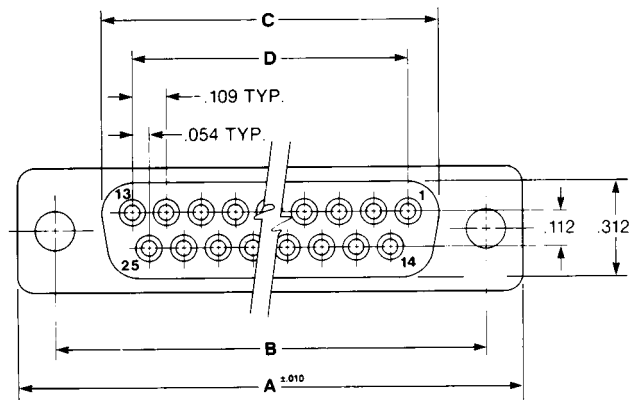
TEMPERATURE RATING: -55°C TO 125°C

APPLICATION TOOLING

Mass Insertion Press Fit Tool:

- 09 pos. 9823501
- 15 pos. 9823502
- 25 pos. 9823503
- 37 pos. 9823504

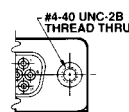
REMOVAL TOOL: Part # 98180
 CAP REMOVAL TOOL: Part # 98175



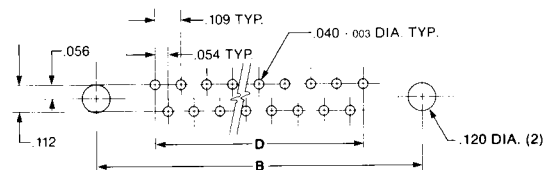
**MOUNTING STYLE A
FLUSH**



**MOUNTING STYLE B
THREADED STANDOFF**



**MOUNTING STYLE C
FLUSH INSERT**



P.C. BOARD HOLE PATTERN

Ordering Information

NUMBER OF CONTACTS	BASIC CONNECTOR W/ .120" DIA. THRU HOLES	CATALOG NUMBER BY MOUNTING STYLE		DIMENSIONS			
		4-40 THREADED STANDOFF	4-40 FLUSH THREADED INSERT	A	B	C	D
9	H2R09PF29A	H2R09PF29B	H2R09PF29C	1.224	.984	.646	.436
15	H2R15PF29A	H2R15PF29B	H2R15PF29C	1.552	1.312	.974	.763
25	H2R25PF29A	H2R25PF29B	H2R25PF29C	2.092	1.852	1.514	1.308
37	H2R37PF29A	H2R37PF29B	H2R37PF29C	2.740	2.500	2.162	1.962

NOTE: Add suffix S for metal snap latch. Not available on basic connector.

.395" HEIGHT PROFILE ALL PLASTIC PRESS FIT FEMALE RECEPTACLES FOR PCB MOUNTING



PHYSICAL PROPERTIES

INSULATION MATERIAL: Glass filled polyester
rated UL 94V-0
COLOR: Black
CONTACTS: High strength copper alloy
DURABILITY: Up to 300 insertions and withdrawals
without degradation of performance, dependent
upon contact plating thickness selected

ELECTRICAL PROPERTIES

OPERATING VOLTAGE: 600 VDC (sea level)
CURRENT RATING: 5 Amperes
CONTACT RESISTANCE: 10 milliohms max.
@ rated current
INSULATION RESISTANCE: 5000 megohms minimum
DIELECTRIC WITHSTANDING VOLTAGE:
1000 VAC minimum

ENVIRONMENTAL PROPERTIES

TEMPERATURE RATING: -55°C TO 125°C

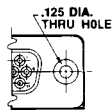
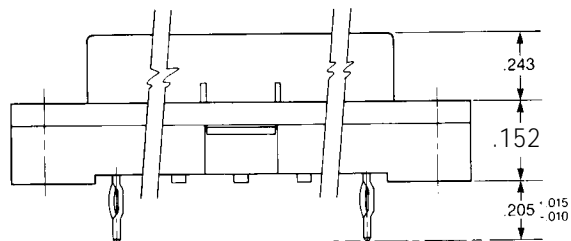
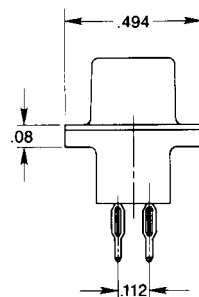
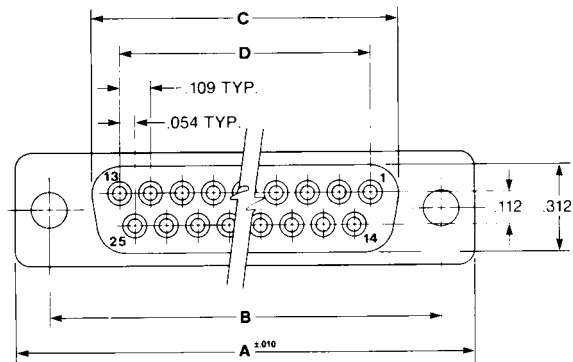
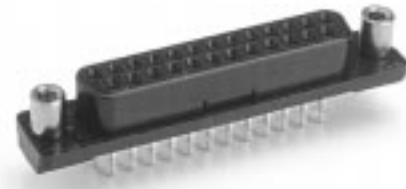
APPLICATION TOOLING

Mass Insertion Press Fit Tool:

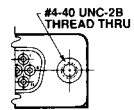
- 09 pos. 9823501
- 15 pos. 9823502
- 25 pos. 9823503
- 37 pos. 9823504

REMOVAL TOOL: Part # 98180

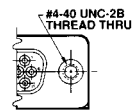
CAP REMOVAL TOOL: Part # 98175



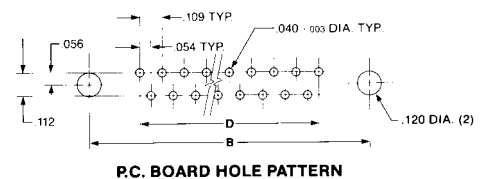
MOUNTING STYLE A
FLUSH



MOUNTING STYLE B
THREADED STANDOFF



MOUNTING STYLE C
FLUSH INSERT



Ordering Information

NUMBER OF CONTACTS	BASIC CONNECTOR W/ .120" DIA. THRU HOLES	CATALOG NUMBER BY MOUNTING STYLE		DIMENSIONS			
		4-40 THREADED STANDOFF	4-40 FLUSH THREADED INSERT	A	B	C	D
9	H3R09PF29A	H3R09PF29B	H3R09PF29C	1.224	.984	.646	.436
15	H3R15PF29A	H3R15PF29B	H3R15PF29C	1.552	1.312	.974	.763
25	H3R25PF29A	H3R25PF29B	H3R25PF29C	2.092	1.852	1.514	1.308
37	H3R37PF29A	H3R37PF29B	H3R37PF29C	2.740	2.500	2.162	1.962

NOTE: Add suffix S for metal snap latch. Not available on basic connector.

.695" HEIGHT PROFILE ALL PLASTIC PRESS FIT FEMALE RECEPTACLES FOR PCB MOUNTING



PHYSICAL PROPERTIES

INSULATION MATERIAL: Glass filled polyester
rated UL 94V-0
COLOR: Black
CONTACTS: High strength copper alloy
DURABILITY: Up to 300 insertions and withdrawals
without degradation of performance, dependent
upon contact plating thickness selected

ELECTRICAL PROPERTIES

OPERATING VOLTAGE: 600 VDC (sea level)
CURRENT RATING: 5 Amperes
CONTACT RESISTANCE: 10 milliohms max.
@ rated current
INSULATION RESISTANCE: 5000 megohms minimum
DIELECTRIC WITHSTANDING VOLTAGE:
1000 VAC minimum

ENVIRONMENTAL PROPERTIES

TEMPERATURE RATING: -55°C TO 125°C

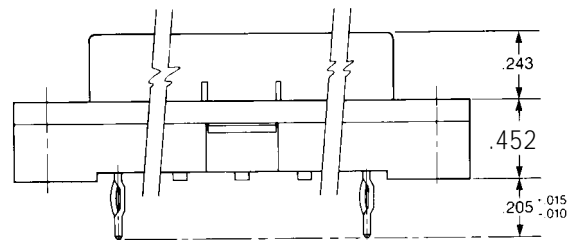
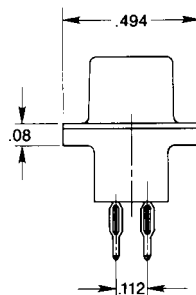
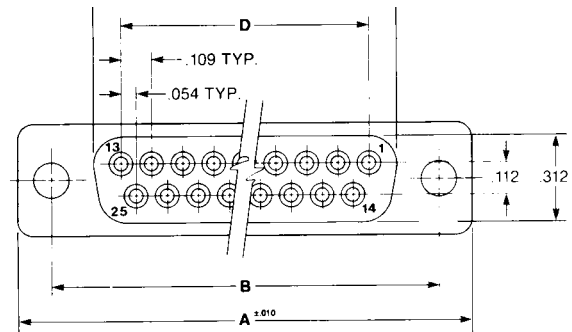
APPLICATION TOOLING

Mass Insertion Press Fit Tool:

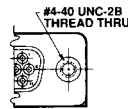
- 09 pos. 9823501
- 15 pos. 9823502
- 25 pos. 9823503
- 37 pos. 9823504

REMOVAL TOOL: Part # 98180

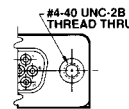
CAP REMOVAL TOOL: Part # 98175



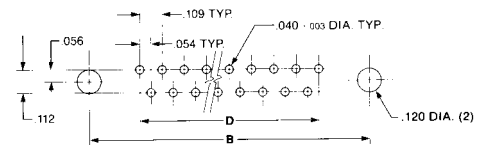
MOUNTING STYLE A
FLUSH



MOUNTING STYLE B
THREADED STANDOFF



MOUNTING STYLE C
FLUSH INSERT



PC BOARD HOLE PATTERN

Ordering Information

NUMBER OF CONTACTS	BASIC CONNECTOR W/ .120" DIA. THRU HOLES	CATALOG NUMBER BY MOUNTING STYLE		DIMENSIONS			
		4-40 THREADED STANDOFF	4-40 FLUSH THREADED INSERT	A	B	C	D
9	H8R09PF29A	H8R09PF29B	H8R09PF29C	1.224	.984	.646	.436
15	H8R15PF29A	H8R15PF29B	H8R15PF29C	1.552	1.312	.974	.763
25	H8R25PF29A	H8R25PF29B	H8R25PF29C	2.092	1.852	1.514	1.308
37	H8R37PF29A	H8R37PF29B	H8R37PF29C	2.740	2.500	2.162	1.962

NOTE: Add suffix S for metal snap latch. Not available on basic connector.

.480" HEIGHT PROFILE METAL SHELL PRESS FIT FEMALE RECEPTACLES FOR PCB MOUNTING



PHYSICAL PROPERTIES

INSULATION MATERIAL: Glass filled polyester rated UL 94V-0
 COLOR: Black
 CONTACTS: High strength copper alloy
 METAL SHELL: Steel, bright tin plate
 DURABILITY: Up to 300 insertions and withdrawals without degradation of performance, dependent upon contact plating thickness selected

ELECTRICAL PROPERTIES

OPERATING VOLTAGE: 600 VDC (sea level)
 CURRENT RATING: 5 Amperes
 CONTACT RESISTANCE: 10 milliohms max. @ rated current
 INSULATION RESISTANCE: 5000 megohms minimum
 DIELECTRIC WITHSTANDING VOLTAGE: 1000 VAC minimum

ENVIRONMENTAL PROPERTIES

TEMPERATURE RATING: -55°C TO 125°C

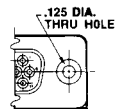
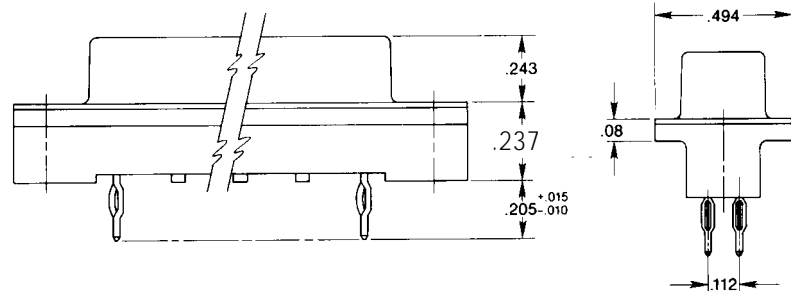
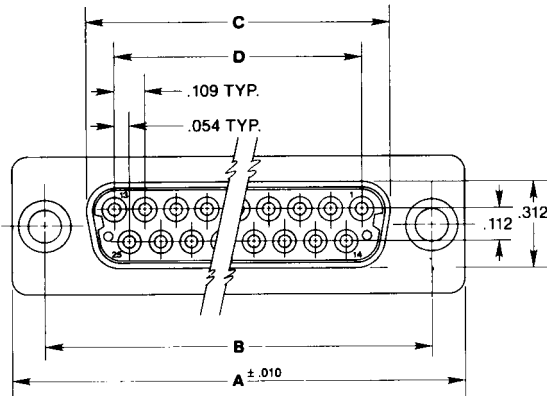
APPLICATION TOOLING

Mass Insertion Press Fit Tool:

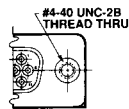
- 09 pos. 9823501
- 15 pos. 9823502
- 25 pos. 9823503
- 37 pos. 9823504

REMOVAL TOOL: Part # 98180

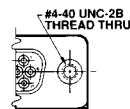
CAP REMOVAL TOOL: Part # 98175



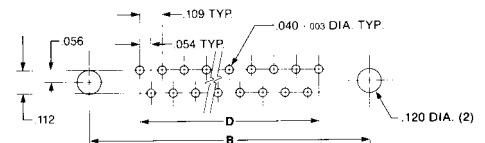
MOUNTING STYLE A
FLUSH



MOUNTING STYLE B
THREADED STANDOFF



MOUNTING STYLE C
FLUSH INSERT



PC BOARD HOLE PATTERN

Ordering Information

NUMBER OF CONTACTS	BASIC CONNECTOR W/ .120" DIA. THRU HOLES	CATALOG NUMBER BY MOUNTING STYLE		DIMENSIONS			
		4-40 THREADED STANDOFF	4-40 FLUSH THREADED INSERT	A	B	C	D
9	H4R09PF29A	H4R09PF29B	H4R09PF29C	1.224	.984	.646	.436
15	H4R15PF29A	H4R15PF29B	H4R15PF29C	1.552	1.312	.974	.763
25	H4R25PF29A	H4R25PF29B	H4R25PF29C	2.092	1.852	1.514	1.308
37	H4R37PF29A	H4R37PF29B	H4R37PF29C	2.740	2.500	2.162	1.962

NOTE: Add suffix S for metal snap latch. Not available on basic connector.

.375 HEIGHT PROFILE METAL SHELL PRESS FIT FEMALE RECEPTACLES FOR PCB MOUNTING



PHYSICAL PROPERTIES

INSULATION MATERIAL: Glass filled polyester rated UL 94V-0
 COLOR: Black
 CONTACTS: High strength copper alloy
 METAL SHELL: Steel, bright tin plate
 DURABILITY: Up to 300 insertions and withdrawals without degradation of performance, dependent upon contact plating thickness selected

ELECTRICAL PROPERTIES

OPERATING VOLTAGE: 600 VDC (sea level)
 CURRENT RATING: 5 Amperes
 CONTACT RESISTANCE: 10 milliohms max. @ rated current
 INSULATION RESISTANCE: 5000 megohms minimum
 DIELECTRIC WITHSTANDING VOLTAGE: 1000 VAC minimum

ENVIRONMENTAL PROPERTIES

TEMPERATURE RATING: -55°C TO 125°C

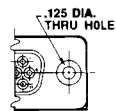
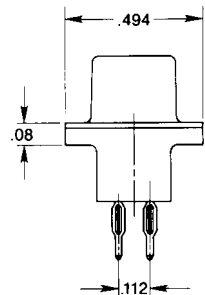
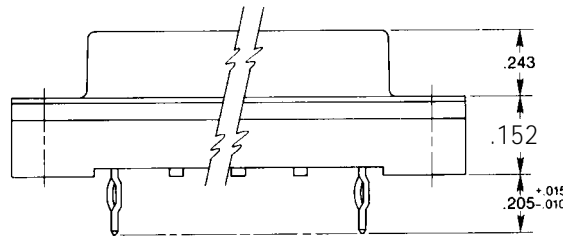
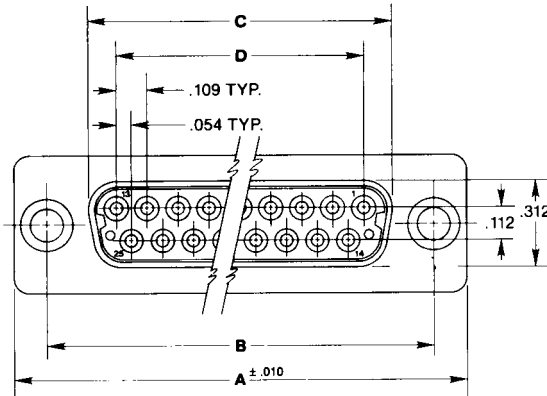
APPLICATION TOOLING

Mass Insertion Press Fit Tool:

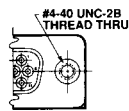
- 09 pos. 9823501
- 15 pos. 9823502
- 25 pos. 9823503
- 37 pos. 9823504

REMOVAL TOOL: Part # 98180

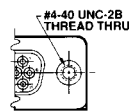
CAP REMOVAL TOOL: Part # 98175



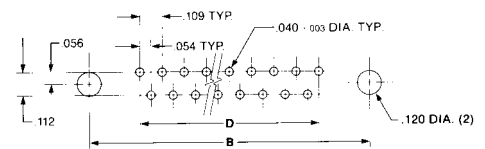
MOUNTING STYLE A
FLUSH



MOUNTING STYLE B
THREADED STANDOFF



MOUNTING STYLE C
FLUSH INSERT



PC BOARD HOLE PATTERN

Ordering Information

NUMBER OF CONTACTS	BASIC CONNECTOR W/ .120" DIA. THRU HOLES	CATALOG NUMBER BY MOUNTING STYLE		DIMENSIONS			
		4-40 THREADED STANDOFF	4-40 FLUSH THREADED INSERT	A	B	C	D
9	H5R09PF29A	H5R09PF29B	H5R09PF29C	1.224	.984	.646	.436
15	H5R15PF29A	H5R15PF29B	H5R15PF29C	1.552	1.312	.974	.763
25	H5R25PF29A	H5R25PF29B	H5R25PF29C	2.092	1.852	1.514	1.308
37	H5R37PF29A	H5R37PF29B	H5R37PF29C	2.740	2.500	2.162	1.962

NOTE: Add suffix S for metal snap latch. Not available on basic connector.