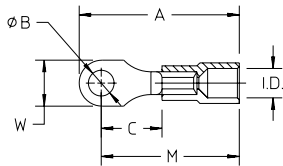


T&B Crimp Terminals

Ring Terminals



Vinyl Insulated Ring Terminals



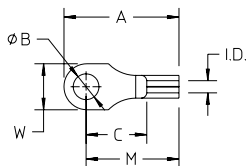
Cat. No.	Wire Range	Ins. Color	B Bolt Size	Dimensions					Dist. Bagged Qty.	Bulk† Ctn. Qty.
				A	W	C	M	I.D.		
TV18-6R	22-18	Red	#4-#6	.870	.250	.325	.745	.160	50	1,000
TV18-8R	22-18	Red	#8	.900	.310	.325	.745	.160	50	1,000
TV18-10R	22-18	Red	#10	.900	.310	.325	.745	.160	50	1,000
TV18-14R	22-18	Red	b"	1.050	.433	.399	.831	.156	50	1,000
TV18-516R	22-18	Red	j"	1.186	.551	.472	.866	.156	50	1,000
TV14-6R	16-14	Blue	#6	.870	.250	.325	.745	.185	50	1,000
TV14-8R	16-14	Blue	#8	.900	.310	.325	.745	.185	50	1,000
TV14-10R	16-14	Blue	#10	.900	.310	.325	.745	.185	50	1,000
TV14-14R	16-14	Blue	b"	1.083	.433	.433	.866	.174	50	1,000
TV14-516R	16-14	Blue	j"	1.182	.551	.473	.906	.174	50	1,000
TV14-38R	16-14	Blue	c"	1.348	.709	.551	.995	.174	50	1,000
TV10-6R	12-10	Yellow	#6	.995	.310	.325	.840	.267	25	500
TV10-8R	12-10	Yellow	#8	.995	.310	.325	.840	.267	25	500
TV10-10R	12-10	Yellow	#10	.995	.310	.325	.840	.267	25	500
TV10-14R	12-10	Yellow	b"	1.088	.500	.325	.840	.267	25	500
TV10-516R	12-10	Yellow	j"	1.260	.551	.512	1.260	.267	25	500
TV10-38R	12-10	Yellow	c"	1.490	.709	.590	1.062	.267	25	500
TV10-12R	12-10	Yellow	d"	1.634	.748	.788	.984	.267	25	500
TV8-8R*	8 AWG	Red	#8	1.281	.469	.485	1.115	.318	25	500
TV8-10R*	8 AWG	Red	#10	1.281	.469	.485	1.115	.318	25	500
TV8-14R*	8 AWG	Red	b"	1.281	.469	.485	1.115	.318	25	500
TV8-516R*	8 AWG	Red	j"	1.375	.625	.548	1.173	.318	25	500
TV8-38R*	8 AWG	Red	c"	1.375	.625	.548	1.173	.318	25	500
TV8-12R*	8 AWG	Red	d"	1.719	.813	.735	1.360	.318	25	500
TV6-10R*	6 AWG	Blue	#10	1.531	.469	.579	1.360	.418	10	250
TV6-14R*	6 AWG	Blue	b"	1.531	.469	.579	1.360	.418	10	250
TV6-516R*	6 AWG	Blue	j"	1.625	.625	.610	1.391	.418	10	250
TV6-38R*	6 AWG	Blue	c"	1.625	.625	.610	1.391	.418	10	250
TV6-12R*	6 AWG	Blue	d"	1.813	.813	.673	1.454	.418	10	250

*Not UL Listed.

†For Bulk Quantities, add "-1" to Catalog Number i.e. TV18-6R-1.



Non-Insulated Ring Terminals



Cat. No.	Wire Range	B Bolt Size	Dimensions					Dist. Bagged Qty.	Bulk† Ctn. Qty.
			A	W	C	M	I.D.		
T18-6R	22-18	#4-#6	.625	.250	.325	.500	.058	50	1,000
T18-8R	22-18	#8	.655	.310	.325	.500	.058	50	1,000
T18-10R	22-18	#10	.655	.310	.325	.500	.058	50	1,000
T14-6R	16-14	#6	.625	.250	.325	.500	.083	50	1,000
T14-8R	16-14	#8	.655	.310	.325	.500	.083	50	1,000
T14-10R	16-14	#10	.655	.310	.325	.500	.083	50	1,000
T10-6R	12-10	#6	.730	.310	.325	.575	.131	25	500
T10-8R	12-10	#8	.730	.310	.325	.575	.131	25	500
T10-10R	12-10	#10	.730	.310	.325	.575	.131	25	500
T10-14R	12-10	b"	.823	.500	.325	.575	.131	25	500

†For Bulk Quantities, add "-1" to Catalog Number i.e. T18-6R-1.

Thomas & Betts