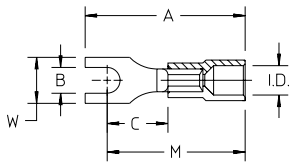
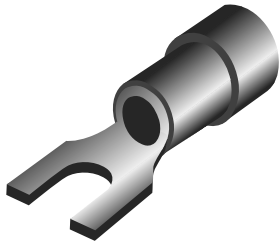


# T&B Crimp Terminals

## Fork Terminals

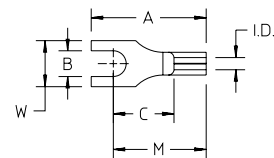
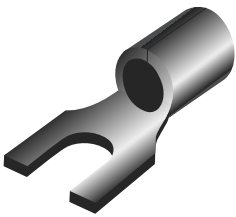


### Vinyl Insulated Fork Terminals



Cat. No.	Wire Range	Ins. Color	B Bolt Size	Dimensions					Dist. Bagged Qty.	Bulk† Ctn. Qty.
				A	W	C	M	I.D.		
TV18-6F	22-18	Red	#6	.870	.250	.325	.745	.160	50	1,000
TV18-8F	22-18	Red	#8	.900	.310	.325	.745	.160	50	1,000
TV18-10F	22-18	Red	#10	.900	.310	.325	.745	.160	50	1,000
TV18-14F	22-18	Red	b"	1.044	.433	.393	.836	.156	50	1,000
TV14-6F	16-14	Blue	#6	.900	.310	.325	.745	.185	50	1,000
TV14-8F	16-14	Blue	#8	.900	.310	.325	.745	.185	50	1,000
TV14-10F	16-14	Blue	#10	.900	.310	.325	.745	.185	50	1,000
TV14-14F	16-14	Blue	b"	1.046	.433	.393	.836	.174	50	1,000
TV10-6F	12-10	Yellow	#6	.994	.310	.325	.840	.267	25	500
TV10-8F	12-10	Yellow	#8	.994	.375	.325	.840	.267	25	500
TV10-10F	12-10	Yellow	#10	.994	.375	.325	.840	.267	25	500
TV10-14F	12-10	Yellow	b"	.994	.500	.325	.840	.267	25	500
TV10-516F	12-10	Yellow	j"	1.345	.551	.428	.984	.267	25	500
TV10-38F	12-10	Yellow	c"	1.424	.709	.507	1.063	.267	25	500

†For Bulk Quantities, add "-1" to Catalog Number i.e. TV18-6F-1.



### Non-Insulated Fork Terminals



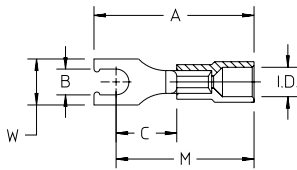
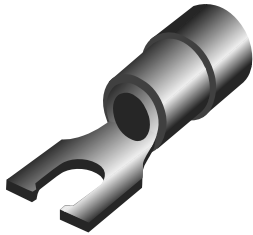
Cat. No.	Wire Range	B Bolt Size	Dimensions					Dist. Bagged Qty.	Bulk† Ctn. Qty.
			A	W	C	M	I.D.		
T18-6F	22-18	#6	.625	.250	.325	.500	.058	50	1,000
T18-8F	22-18	#8	.655	.310	.325	.500	.058	50	1,000
T18-10F	22-18	#10	.655	.310	.325	.500	.058	50	1,000
T14-6F	16-14	#6	.654	.310	.325	.500	.083	50	1,000
T14-8F	16-14	#8	.654	.310	.325	.500	.083	50	1,000
T14-10F	16-14	#10	.654	.310	.325	.500	.083	50	1,000
T10-6F	12-10	#6	.730	.310	.325	.575	.131	25	500
T10-8F	12-10	#8	.760	.375	.325	.575	.131	25	500
T10-10F	12-10	#10	.760	.375	.325	.575	.131	25	500
T10-14F	12-10	b"	.823	.500	.325	.575	.131	25	500

†For Bulk Quantities, add "-1" to Catalog Number i.e. T18-6F-1.

**Thomas & Betts**

# T&B Crimp Terminals

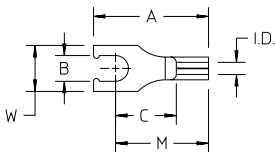
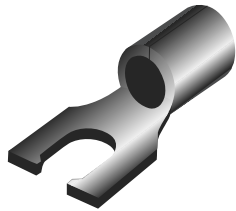
## Locking Fork Terminals



### Vinyl Insulated Locking Fork Terminals

Cat. No.	Wire Range	Ins. Color	B Bolt Size	Dimensions					Dist. Bagged Qty.	Bulk† Ctn. Qty.
				A	W	C	M	I.D.		
TV18-6LF	22-18	Red	#6	.900	.250	.325	.745	.160	50	1,000
TV18-8LF	22-18	Red	#8	.900	.285	.325	.745	.160	50	1,000
TV18-10LF	22-18	Red	#10	.900	.285	.325	.745	.160	50	1,000
TV14-6LF	16-14	Blue	#6	.900	.245	.325	.745	.185	50	1,000
TV14-8LF	16-14	Blue	#8	.900	.285	.325	.745	.185	50	1,000
TV14-10LF	16-14	Blue	#10	.900	.285	.325	.745	.185	50	1,000
TV10-6LF	12-10	Yellow	#6	1.025	.310	.325	.840	.267	25	500
TV10-8LF	12-10	Yellow	#8	1.025	.365	.325	.840	.267	25	500
TV10-10LF	12-10	Yellow	#10	1.025	.365	.325	.840	.267	25	500

†For Bulk Quantities, add "-1" to Catalog Number i.e. TV18-6LF-1.



### Non-Insulated Locking Fork Terminals

Cat. No.	Wire Range	B Bolt Size	Dimensions					Dist. Bagged Qty.	Bulk† Ctn. Qty.
			A	W	C	M	I.D.		
T18-6LF	22-18	#6	.655	.250	.325	.500	.058	50	1,000
T18-8LF	22-18	#8	.655	.285	.325	.500	.058	50	1,000
T18-10LF	22-18	#10	.655	.285	.325	.500	.058	50	1,000
T14-6LF	16-14	#6	.655	.245	.325	.500	.083	50	1,000
T14-8LF	16-14	#8	.655	.285	.325	.500	.083	50	1,000
T14-10LF	16-14	#10	.655	.285	.325	.500	.083	50	1,000
T10-6LF	12-10	#6	.760	.310	.325	.575	.131	25	500
T10-8LF	12-10	#8	.760	.365	.325	.575	.131	25	500
T10-10LF	12-10	#10	.760	.365	.325	.575	.131	25	500

†For Bulk Quantities, add "-1" to Catalog Number i.e. T18-6LF-1.

**Thomas & Betts**