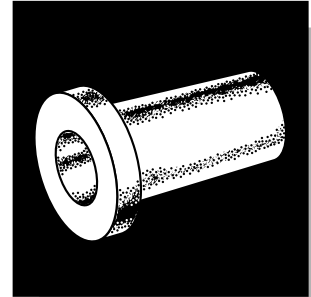
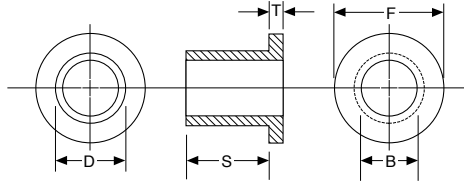


Catamount®

Nylon Hardware

FLANGED BUSHINGS

- Seven Stock Sizes for #4 through #3/8 Screws with Shank Lengths to 1"
- Available in 6/6 Natural or Black Nylon
- UL Flammability 94 V-2
- Oxygen Index: 31
- Non-Conductive, Non-Corrosive; Resistant to Fuels, Lubricants and most Chemicals
- Nylon is widely used in Electromechanical Parts because of its Excellent Mechanical Properties, Heat Resistance and Satisfactory Electrical Properties



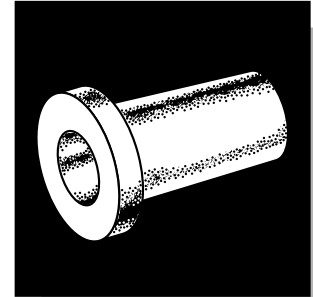
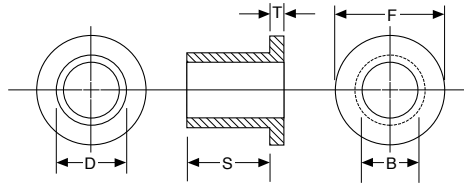
Item Number	Screw Size	B I.D. (Inch)	D Shank Dia. (Inch)	F Flange (Inch)	S Shank Length (Inch)	T Flange Thickness (Inch)
FBNY-125-9	#4	.125	.203	.285	.250	.045
FBNY-141-9	#6	.141	.246	.359	.281	.055
FBNY-171-9	#8	.171	.281	.390	.312	
FBNY-196-9	#10	.196	.310	.437	.375	
FBNY-265-9	¼	.265	.370	.525	.500	.063
FBNY-275-9		.275	.375	.546	1.000	
FBNY-380-9	3/8	.380	.500	.625	.188	.062
Tolerance ±					.015	.010

Catamount®

Nylon Hardware

SCREW INSULATORS

- Over 30 Stock Sizes for #2 through #1/4 Screws with Shank Lengths from 1/32" to 3/4"
- Available in 6/6 Natural Nylon
- UL Flammability 94 V-2
- Oxygen Index: 31
- Non-Conductive, Non-Corrosive; Resistant to Fuels, Lubricants and most Chemicals
- Nylon is widely used in Electromechanical Parts because of its Excellent Mechanical Properties, Heat Resistance and Satisfactory Electrical Properties



Item Number	Screw Size	B I.D. (Inch)	D Shank Dia. (Inch)	F Flange (Inch)	S Shank Length (Inch)	T Flange Thickness (Inch)					
SINY-025-9	4	.115	.145	.235	1/32	.047					
SINY-030-9					3/64						
SINY-035-9					1/16						
SINY-040-9					3/32						
SINY-045-9					1/8						
SINY-050-9					5/32						
SINY-055-9					3/16						
SINY-060-9					1/4						
SINY-065-9					5/8						
SINY-070-9					1/2						
SINY-075-9	6	.140	.170	.290	1/16	.047					
SINY-080-9					3/32						
SINY-085-9					1/8						
SINY-090-9					5/32						
SINY-100-9					3/16						
SINY-105-9					1/4						
SINY-110-9					3/8						
SINY-115-9					1/2						
SINY-120-9					1/8		8	.173	.205	.344	.062
SINY-125-9					9/64						
SINY-130-9	1/4										
SINY-135-9	3/8										
SINY-140-9	1/2										
SINY-145-9	5/8										
SINY-150-9	3/4										
SINY-160-9	3/16	10	.200	.260	.399	.062					
SINY-165-9	1/4										
SINY-170-9	3/8										
SINY-175-9	1/2										
SINY-180-9	9/16										
SINY-185-9	5/8										
SINY-190-9	3/4										
SINY-195-9	1/8						1/4	.260	.312	.513	.062
SINY-205-9	3/16										
SINY-220-9	1/4										
SINY-225-9	3/8										
SINY-230-9	1/2										
SINY-235-9	5/8										
SINY-240-9	3/4										
Tolerance ±			.015			.010					