

**0.200" PITCH  
INSULATION DISPLACEMENT  
SERIES PCB7A**



**PHYSICAL PROPERTIES**

**Housing**

HOUSING MATERIAL: Polypropylene

FLAMMABILITY: UL94V-2

COLOR: Black

**Terminal**

TUBULAR CONTACT:

PC CONTACT: Phosphor Bronze with Bright Tin or Gold over Nickel plating

SCREW:

CLAMP:

**Mechanical**

PITCH (TERMINAL SPACING): .200"

MOUNTING SCREW SIZE: #6

WIRE STRIP LENGTH: DO NOT STRIP

RECOMMENDED TIGHTENING TORQUE:

RECOMMENDED SCREWDRIVERS: Special Hand Tool

Catalog No. PCHT7

BOARD INSERTION FORCE (TYP.) PER CKT.: 6 oz.

(170g)

BOARD SEPARATION FORCE (TYP.) PER CKT.: 2 oz.

(57g)

DURABILITY: Passes MIL-C-21097: 500 cycles

**ELECTRICAL PROPERTIES**

MAXIMUM CURRENT: 7A

OPERATING VOLTAGE: 250V

WIRE RANGE: #14-22 AWG

DIELECTRIC WITHSTAND: 3200V

INSULATION RESISTANCE: 10<sup>11</sup> ohms

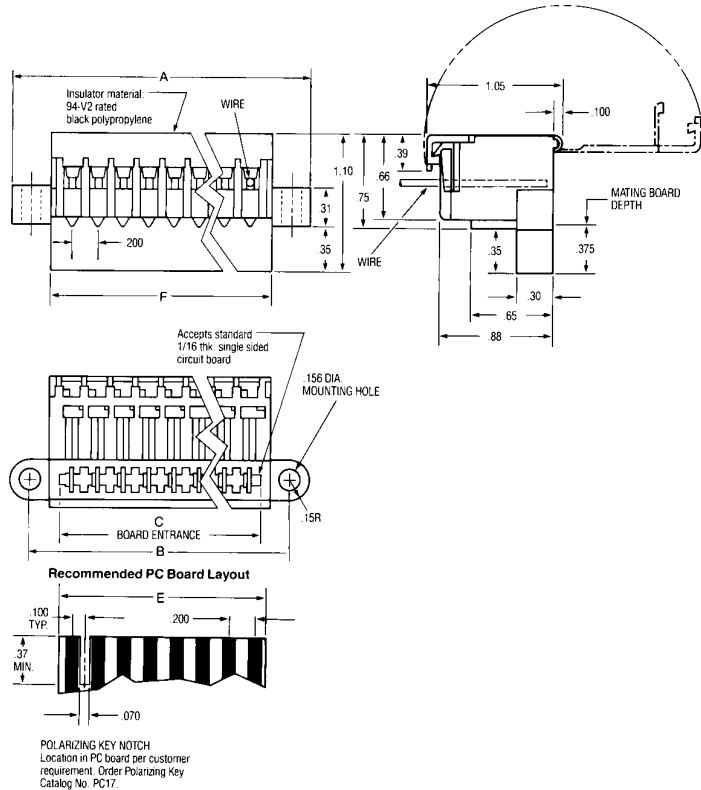
CONTACT RESISTANCE: 2.2 milliohms

**ENVIRONMENTAL PROPERTIES**

OPERATING TEMPERATURE RANGE:

-65°C to +105°C

(-85°F to +221°F)



**Ordering Information**

CATALOG # (SPECIFY X)	NO. OF CIRCUITS	A	B	C	E	F
PCB7A06SX	06	1.93	1.63	1.180	1.160	1.32
PCB7A08SX	08	2.33	2.03	1.580	1.560	1.72
PCB7A10SX	10	2.73	2.43	1.980	1.960	2.12
PCB7A12SX	12	3.13	2.83	2.380	2.360	2.52
PCB7A14SX	14	3.53	3.23	2.780	2.760	2.92
PCB7A16SX	16	3.93	3.63	3.180	3.160	3.32
PCB7A18SX	18	4.33	4.03	3.580	3.560	3.72
PCB7A20SX	20	4.73	4.43	3.980	3.960	4.12
PCB7A22SX	22	5.13	5.23	4.780	4.760	4.52
PCB7A24SX	24	5.53	5.23	4.780	4.760	4.92
PCB7A26SX	26	5.93	5.63	5.180	5.160	5.32

X	WIRE SIZE (SOLID OR STRANDED)
1	#20 & #22 AWG
2	#18 & #16 AWG
3	#14 AWG

\*NOTE: For optional Gold-over-Nickel plating on contacts (instead of standard bright tin), change the letter "S" of the catalog number to "A."

