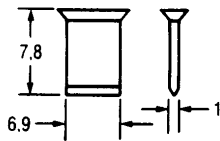


ACCESSORIES

POLARIZATION OPTIONS

EXTERNAL PLASTIC POLARIZING KEY—

With loss of a contact
For types H11, H15, H15/HA, F24/H7
(Customer installed)



Polarizing Key HCOMK installed in Type H11 female connector — The removal of the corresponding male terminal is required.

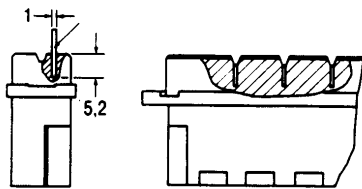
Catalog No. HCOMK

EXTERNAL POLARIZING KEY—

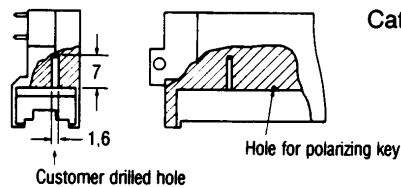
Without loss of a contact
For types H15, H15/HA, F24+H7 (No drilling required on Type F24+H7)
(Customer installed)



FEMALE CONNECTOR



MALE CONNECTOR

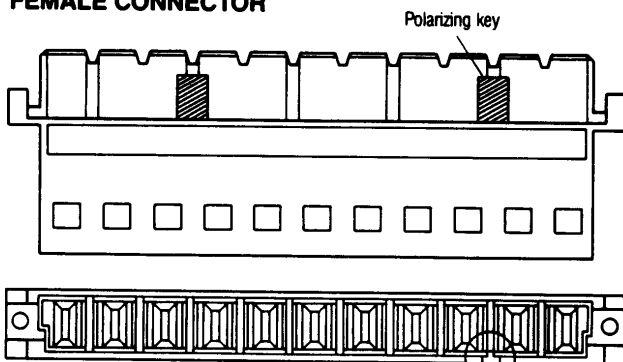


Catalog No. HCOOK

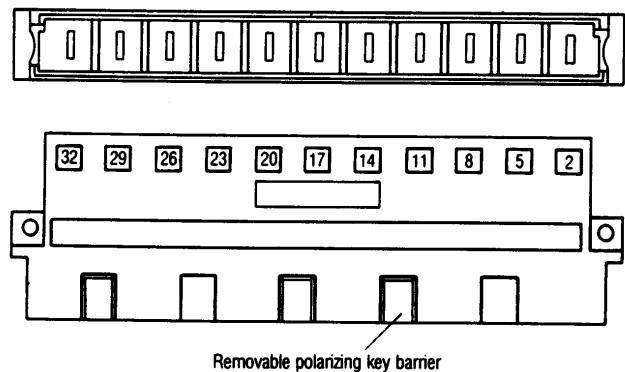
INTEGRAL POLARIZING KEY—

Without loss of a contact
For types H11, H15, H15/HA, F, and F24+H7 with Integral Polarization Capability
(Customer installed)

FEMALE CONNECTOR



MALE CONNECTOR



Catalog No. H11COOK