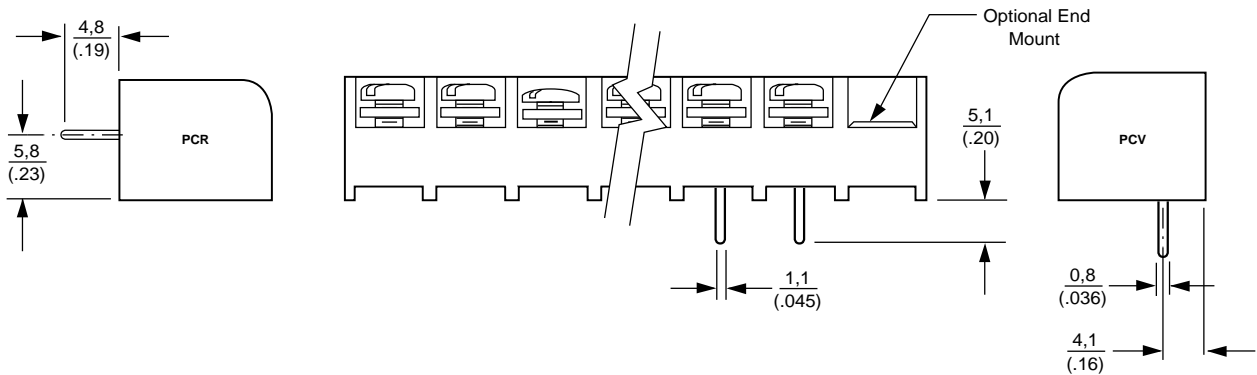
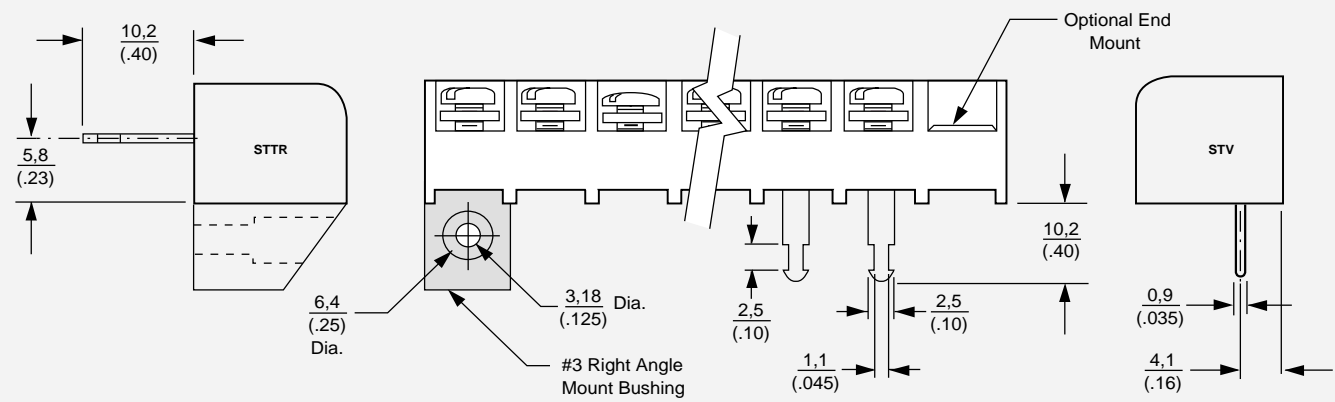


0.250" PITCH
SERIES #3

Printed Circuit Pin

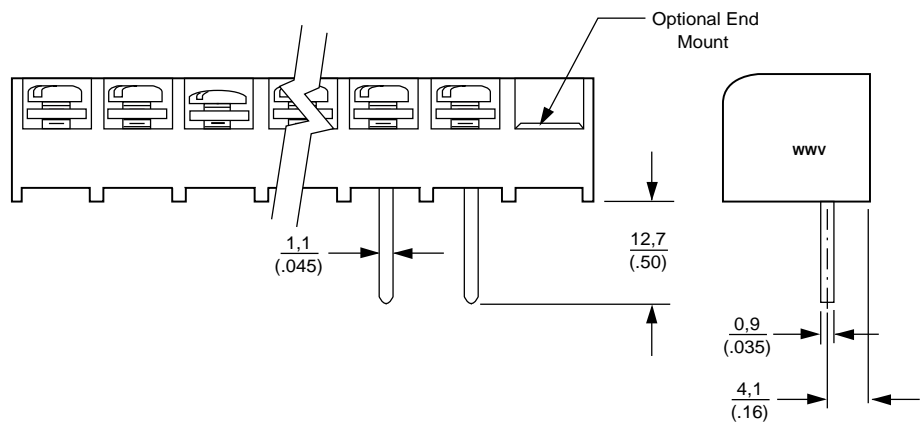


Solder Turret

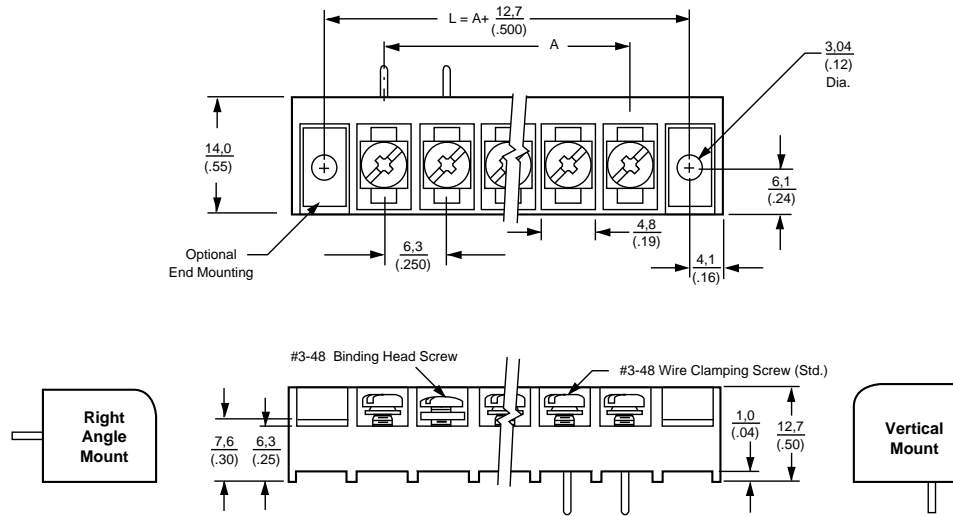


Wire Wrap

#3WWR not available



0.250" PITCH
SERIES #3



TERMINALS	A	TERMINALS	A
2	(0.25) 6,3	18	(4.25) 107,9
3	(0.50) 12,7	19	(4.50) 114,3
4	(0.75) 19,0	20	(4.75) 120,6
5	(1.00) 25,4	21	(5.00) 127,0
6	(1.25) 31,7	22	(5.25) 133,3
7	(1.50) 38,1	23	(5.50) 139,7
8	(1.75) 44,4	24	(5.75) 146,0
9	(2.00) 50,8	25	(6.00) 152,4
10	(2.25) 57,1	26	(6.25) 158,8
11	(2.50) 63,5	27	(6.50) 165,1
12	(2.75) 69,8	28	(6.75) 171,5
13	(3.00) 76,2	29	(7.00) 177,8
14	(3.25) 82,5	30	(7.25) 184,2
15	(3.50) 88,9	31	(7.50) 190,5
16	(3.75) 95,2	32	(7.75) 196,9
17	(4.00) 101,6		

0.250" PITCH SERIES RSB2

PHYSICAL PROPERTIES

HOUSING MATERIAL: Polypropylene
FLAMMABILITY: UL94V-0
COLOR: Black

TERMINAL

TERMINALS: Brass, bright tin plating
SCREWS: #3-48 steel, zinc plating with clear chromate coating
CLAMP: Steel, zinc plating with clear chromate coating

MECHANICAL

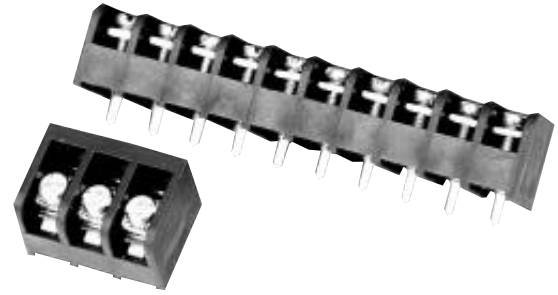
PITCH (TERMINAL SPACING): 0.250"
RECOMMENDED PCB HOLE DIA.: 0.073"
RECOMMENDED TIGHTENING TORQUE: 5.5 in lbs.
RECOMMENDED SCREWDRIVERS: Any #1 Phillips-head

ELECTRICAL PROPERTIES

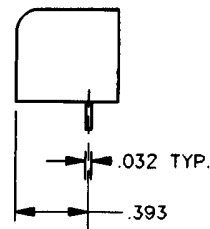
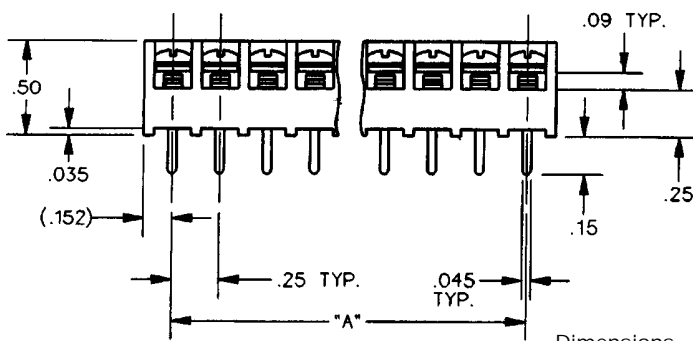
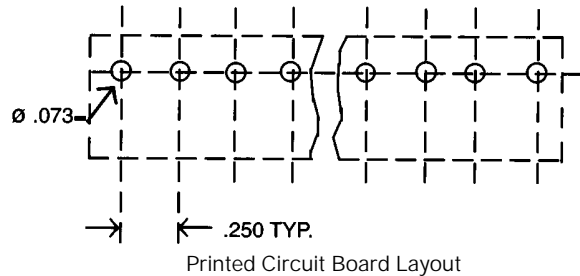
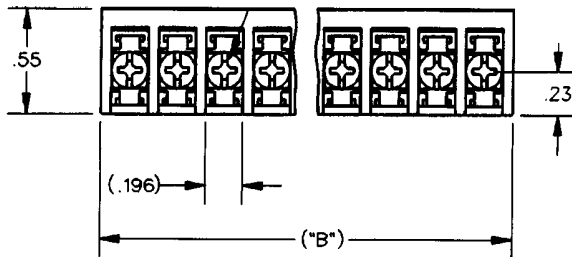
MAXIMUM CURRENT: 10A
OPERATING VOLTAGE: 300V
WIRE RANGE: 18-22 AWG

ENVIRONMENTAL PROPERTIES

MAX. OPERATING TEMPERATURE: 105°C



RSB2VP##1102



Dimensions

TERMINALS	A	B	TERMINALS	A	B
2	0.25"	0.55"	9	2.00"	2.30"
3	0.50"	0.80"	10	2.25"	2.55"
4	0.75"	1.05"	11	2.50"	2.80"
5	1.00"	1.30"	12	2.75"	3.05"
6	1.25"	1.55"	13	3.00"	3.30"
7	1.50"	1.80"	14	3.25"	3.55"
8	1.75"	2.05"	15	3.50"	3.80"
			16	3.75"	4.05"

BUCHANAN.



0.250" PITCH
SERIES RSB2

ORDERING INFORMATION

RSB 2 V P 06 11 02 11
A B C D E F G H

A Single Screw Tri-Barrier Strip RSB

B Contact Spacing (Center-to-Center)
2=.250 in.

C Mounting Position
V=Vertical Mounting

D End Contact Mounting Options
P=Direct Mounting: all positions filled with contacts, with barriers

E No. of Circuits (Not Positions)
02 through 16

F Terminal Style
11=Printed Circuit Pin

G Top Hardware Options
Catalog Number Code: 02.
For applications requiring extra security, captive clamps under the screw heads augment the locking tabs on each contact. Screws are Phil-slot bright zinc and chromate plated steel.

H Circuit Identification Options
Request drawing #7015015 for complete information. Custom markings are available on special order.

NN=No Circuit Identification

Front	Top
11	21 = 12345...
12	22 = ...54321
13	23 = 1 2 3 4 5 ...
14	24 = ... 5 4 3 2 1
15	25 = 12345...
16	26 = ...54321
17	27 = 1 2 3 4 5 ...
18	28 = ... 5 4 3 2 1

