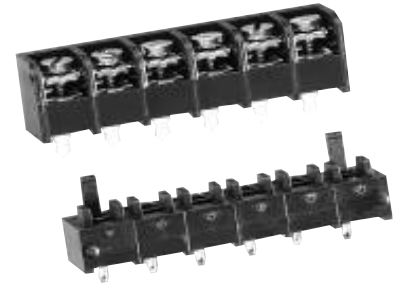


0.375" PITCH
SERIES 6DTB (FOR SERIES #6)
MATED PAIR ASSEMBLY
HIGH VIBRATION VERSION



6DTB-06-000

PHYSICAL PROPERTIES

Barrier Strip

HOUSING MATERIAL: Polyamide
FLAMMABILITY: UL94V-0
COLOR: Black
TERMINALS: Bright acid tin over copper alloy
Socket

HOUSING MATERIAL: Glass reinforced polyester
FLAMMABILITY: UL94V-0
COLOR: Black

TERMINALS: Bright acid-tin over copper alloy
SCREWS: #6-32 steel, zinc plating with clear chromate coating. Wire clamping screws standard

MECHANICAL

PITCH (TERMINAL SPACING): 0.375" centers
RECOMMENDED PCB HOLE DIA.: .073"

ELECTRICAL PROPERTIES

MAXIMUM CURRENT: 25A
OPERATING VOLTAGE: 300V
WIRE RANGE: 12-22AWG

ENVIRONMENTAL PROPERTIES

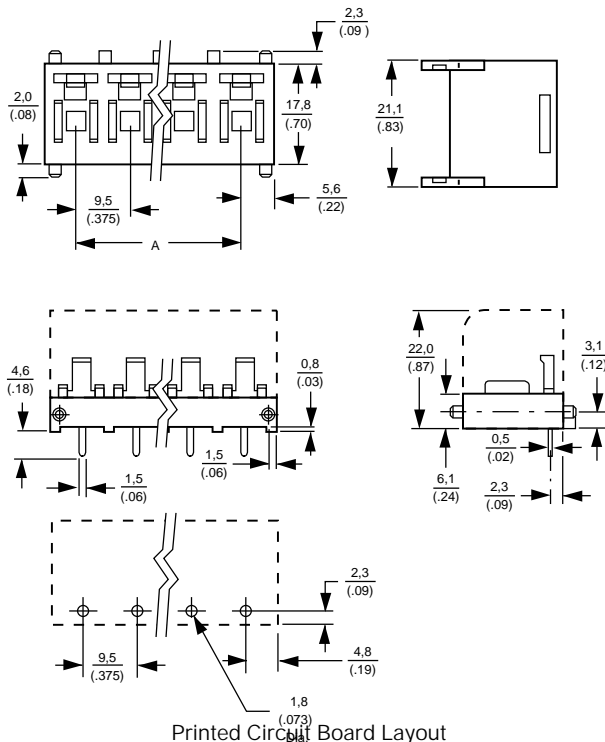
MAX. OPERATING TEMPERATURE:
Socket: 130° C
Barrier Strip: 105° C

ORDERING INFORMATION

6 **DTB** - **06** - **006**
A B C D

- A Contact Spacing
6 = 0.375" Centers
- B Series
DTB = Socket
- C No. of Circuits (Not positions)
02 through 10
- D Screw Styles
000 = Slotted head screw with wire clamp plate
006 = Phil-slot head screw with wire clamp plate

#6 DTB Series



Dimensions

TERMINALS	A
2	(.375) 9,5
3	(.75) 19,1
4	(1.13) 28,6
5	(1.50) 38,1
6	(1.88) 47,6
7	(2.25) 57,2
8	(2.63) 66,7
9	(3.00) 76,2
10	(3.37) 85,7



LR30811 E54800