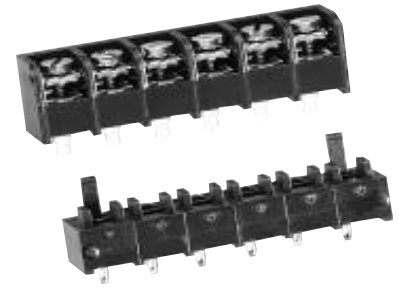


0.325" PITCH
SERIES 4DTB (FOR SERIES #4)
MATED PAIR ASSEMBLY
HIGH VIBRATION VERSION



4DTB-06-000

PHYSICAL PROPERTIES

Barrier Strip

HOUSING MATERIAL: Polyamide
FLAMMABILITY: UL94V-0
COLOR: Black
TERMINALS: Bright acid tin over copper alloy

Socket

HOUSING MATERIAL: Glass reinforced polyester
FLAMMABILITY: UL94V-0
COLOR: Black
TERMINALS: Bright acid-tin over copper alloy

Mechanical

SCREWS: #4-40 steel, zinc plating with clear chromate coating. Wire clamping screws standard. Binding head screw with undercut optional.
PITCH (TERMINAL SPACING): 0.325" centers
RECOMMENDED PCB HOLE DIA.: .073"

ELECTRICAL PROPERTIES

MAX. CURRENT RATING: 20A
OPERATING VOLTAGE: 150V
WIRE RANGE: 14-22

ENVIRONMENTAL PROPERTIES

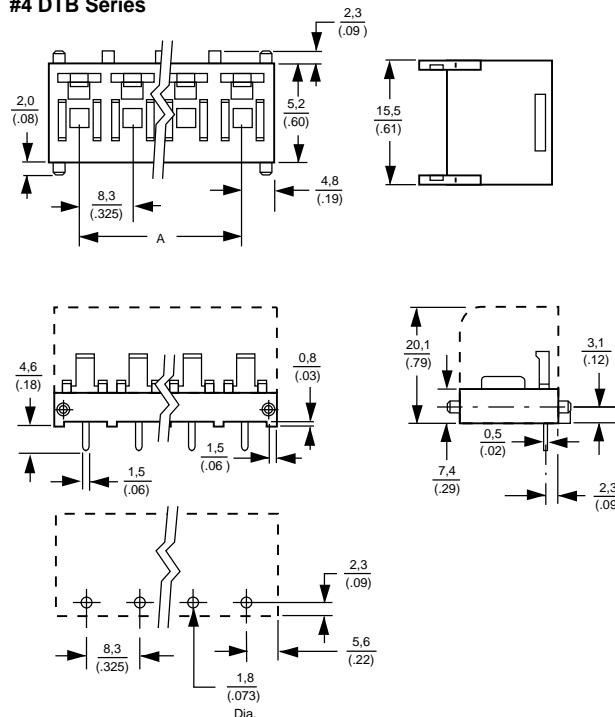
MAX. OPERATING TEMPERATURE:
Socket: 130° C
Barrier Strip: 105° C

ORDERING INFORMATION

4 **DTB** - **06** - **000**

- A** Contact Spacing
4 = 0.325" Centers
- B** Series
DTB = Socket
- C** No. of Circuits (Not positions)
02 through 10
- D** Screw Styles
000 = Slotted head screw with wire clamp plate
006 = Phil-slot head screw with wire clamp plate

#4 DTB Series



Printed Circuit Board Layout

Dimensions

TERMINALS	A
2	(0.325) 8,2
3	(0.65) 16,5
4	(0.97) 24,8
5	(1.30) 33,0
6	(1.63) 41,3
7	(1.95) 49,5
8	(2.28) 57,8
9	(2.60) 66,0
10	(2.92) 74,3



LR30811 E54800