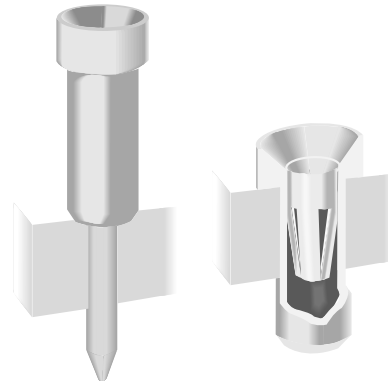


700 Series *Four-Fingered Contacts Disposable Carriers*

A



732-AG4D-ES



FEATURES:

A disposable aluminum carrier forms the backbone of the 700 Series socket, an innovative extension of the Augat precision four-fingered, inner contact concept. Conceived for IC applications requiring maximum air flow for cooling, the 700 Series eliminates heat entrapment associated with an insulator. Additional benefits are:

- Easy solder joint inspection-easy cleaning-easy repair
- “X” & “Y” stackability for circuit flexibility and optimum use of PCB real estate
- Gang insertion of socket pins into PC boards
- 100% non-wicking of flux and solder
- Standard or low profile PC board mounting
- Availability in 6 to 40 positions on .100" (2,54) centers and a wide variety of row spacing
- Machined (Premium Series) and stamped (Economy Series) contacts are available

APPLICATION DIMENSIONS:

- PCB Thickness Range: Standard .062" and .092" (1,57 and 2,34)
- IC Pin Dimension Range: .016" to .021" (0,41 to 0,53) dia., .105" (2,67) min. length
- PCB Hole Size Range: .035" ± .003" (0,89 ± 0,08) standard mount, .055 ± .001" (1,40 ± 0,03) low profile mount

MATERIAL SPECIFICATIONS:

| | |
|-----------------------|---|
| Carrier | Aluminum |
| Sleeve | Machined brass |
| Contact | Beryllium copper |
| Sleeve Plating | Tin/lead or gold |
| Contact Plating | Premium or Economy Series (ES) - gold or tin/lead |
| | Economy Series (ESL) - low gold |

PERFORMANCE SPECIFICATIONS:

MECHANICAL

| | |
|-------------------------|--|
| Vibration | Passed MIL-STD-1344, Method 2005.1, Condition II, 10 G's |
| Shock | Passed MIL-STD-1344, Method 2004.1, Condition C, 100 G's |
| Durability | Passed MIL-STD-1344, Method 2016 |
| Normal Force | 125 Grams average with .018" (0,46) dia. polished steel pin (Premium Series) |
| | 200 Grams average with .018" (0,46) dia. polished steel pin (Economy Series) |
| Inner Contact Retention | |
| in Sleeve | 7.5 Lbs. per line average |
| Sleeve Retention | |
| in Plastic | 3.0 Lbs. per line minimum |
| Solderability | Passed MIL-STD-202F, Method 208 |
| Insertion Force | Premium - 134 Grams (4.7 oz.) average with a .018" (0,46) dia. polished steel pin |
| | Economy - 179 Grams (6.3 oz.) average with a .018" (0,46) dia. polished steel pin |
| Withdrawal Force | 63 Grams (2.2 oz.) average with a (Premium and Economy) .018" (0,46) dia. polished steel pin |

ELECTRICAL

| | |
|----------------------------|--|
| Contact Resistance | 10 Milliohms max. |
| Contact Rating | 3 Amps |
| Capacitance | 1.0 pF per MIL-STD-202, Method 305 (contact to contact) |
| Insulation Resistance | 5,000 Megohms min. @ 500 VDC per MIL-STD-1344, Method 3003.1 |
| Dielectric Withstanding | |
| Voltage | 1,000 Volts RMS per MIL-STD-1344, Method 3001.1 |

ENVIRONMENTAL

| | |
|--------------------------|--|
| Humidity | Passed MIL-STD-1344, Method 1002.2, Cond. II |
| Thermal Shock | Passed MIL-STD-1344, Method 1003.1, Cond. A |
| Operation Temperature .. | Gold inner contact -55°C to +125°C, Tin/lead inner contact -55°C to +105°C |

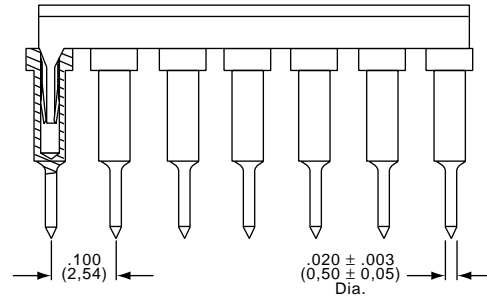
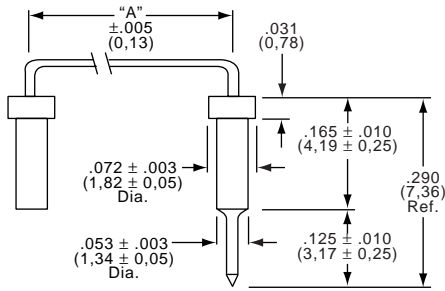
Thomas & Betts

Quality & Innovation From The **AUGAT**® Product Group

A12

Above Board Electronics
1918 Junction Avenue
San Jose, CA 95131
(800) 453-1692 FAX (408) 573-4343

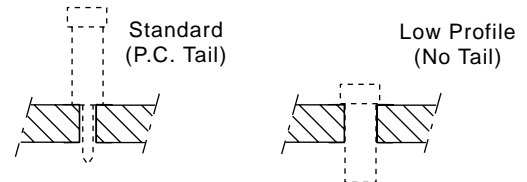
Four-Fingered Contacts Disposable Carriers 700 Series



MOUNTING OPTIONS

REPLACEMENT SOCKET TERMINALS

| | Standard Mount | Low Profile Mount |
|-----------------|----------------|-------------------|
| Gold Sleeve | LSG-1AG14-1 | LSG-1DG17-1 |
| Tin/Lead Sleeve | LSG-1AG14-14 | LSG-1DG17-14 |



STANDARD MOUNT PART NUMBERS

| Economy Series Part Number | Premium Series Part Number | Number of Contacts | Contact Plating | Sleeve Plating | A | Economy Series Part Number | Premium Series Part Number | Number of Contacts | Contact Plating | Sleeve Plating | A |
|----------------------------|----------------------------|--------------------|-----------------|----------------|-----------------|----------------------------|----------------------------|--------------------|-----------------|----------------|-----------------|
| 706-AG2D-ES | 706-AG2D | 6 | Gold | Gold | .300 (7,62) | 724-AG2D-ES | 724-AG2D | 24 | Gold | Gold | .300 (7,62) |
| 706-AG2D-ESL | 706-AG2D | 6 | Gold | Tin/Lead | | 724-AG2D-ESL | 724-AG2D | 24 | Gold | Tin/Lead | |
| 706-AG2D-ESL | 706-AG2D | 6 | Low Gold | Tin/Lead | | 724-AG2D-ESL | 724-AG2D | 24 | Low Gold | Tin/Lead | |
| 708-AG2D-ES | 708-AG2D | 8 | Gold | Gold | .300 (7,62) | 724-AG21D-ES | 724-AG21D | 24 | Gold | Gold | .400 (10,16) |
| 708-AG2D-ES | 708-AG2D | 8 | Gold | Tin/Lead | | 724-AG22D-ES | 724-AG22D | 24 | Gold | Tin/Lead | |
| 708-AG2D-ESL | 708-AG2D | 8 | Low Gold | Tin/Lead | | 724-AG22D-ESL | 724-AG22D | 24 | Low Gold | Tin/Lead | |
| 714-AG2D-ES | 714-AG2D | 14 | Gold | Gold | .300 (7,62) | 724-AG3D-ES | 724-AG3D | 24 | Gold | Gold | .600 (15,24) |
| 714-AG2D-ES | 714-AG2D | 14 | Gold | Tin/Lead | | 724-AG4D-ES | 724-AG4D | 24 | Gold | Tin/Lead | |
| 714-AG2D-ESL | 714-AG2D | 14 | Low Gold | Tin/Lead | | 724-AG4D-ESL | 724-AG4D | 24 | Low Gold | Tin/Lead | |
| 716-AG2D-ES | 716-AG2D | 16 | Gold | Gold | .300 (7,62) | 728-AG3D-ES | 728-AG3D | 28 | Gold | Gold | .600 (15,24) |
| 716-AG2D-ES | 716-AG2D | 16 | Gold | Tin/Lead | | 728-AG4D-ES | 728-AG4D | 28 | Gold | Tin/Lead | |
| 716-AG2D-ESL | 716-AG2D | 16 | Low Gold | Tin/Lead | | 728-AG4D-ESL | 728-AG4D | 28 | Low Gold | Tin/Lead | |
| 718-AG2D-ES | 718-AG2D | 18 | Gold | Gold | .300 (7,62) | 732-AG3D-ES | 732-AG3D | 32 | Gold | Gold | .600 (15,24) |
| 718-AG2D-ES | 718-AG2D | 18 | Gold | Tin/Lead | | 732-AG4D-ES | 732-AG4D | 32 | Gold | Tin/Lead | |
| 718-AG2D-ESL | 718-AG2D | 18 | Low Gold | Tin/Lead | | 732-AG4D-ESL | 732-AG4D | 32 | Low Gold | Tin/Lead | |
| 720-AG2D-ES | 720-AG2D | 20 | Gold | Gold | .300 (7,62) | 736-AG3D-ES | 736-AG3D | 36 | Gold | Gold | .600 (15,24) |
| 720-AG2D-ES | 720-AG2D | 20 | Gold | Tin/Lead | | 736-AG4D-ES | 736-AG4D | 36 | Gold | Tin/Lead | |
| 720-AG2D-ESL | 720-AG2D | 20 | Low Gold | Tin/Lead | | 736-AG4D-ESL | 736-AG4D | 36 | Low Gold | Tin/Lead | |
| 722-AG2D-ES | 722-AG2D | 22 | Gold | Gold | .400 (10,16) | 740-AG3D-ES | 740-AG3D | 40 | Gold | Gold | .600 (15,24) |
| 722-AG2D-ES | 722-AG2D | 22 | Gold | Tin/Lead | | 740-AG4D-ES | 740-AG4D | 40 | Gold | Tin/Lead | |
| 722-AG2D-ESL | 722-AG2D | 22 | Low Gold | Tin/Lead | | 740-AG4D-ESL | 740-AG4D | 40 | Low Gold | Tin/Lead | |
| 722-AG22D-ES | 722-AG22D | 22 | Gold | Gold | .300 (7,62) | | | | | | |
| 722-AG22D-ESL | 722-AG22D | 22 | Low Gold | Tin/Lead | | | | | | | |

LOW PROFILE PART NUMBERS

| Low Profile Part Number | Number of Contacts | Outer Sleeve Plating | A | Low Profile Part Number | Number of Contacts | Outer Sleeve Plating | A |
|-------------------------|--------------------|----------------------|-----------------|-------------------------|--------------------|----------------------|-----------------|
| 706-AG10D | 6 | Gold | .300 (7,62) | 724-AG10D | 24 | Gold | .300 (7,62) |
| 706-AG20D | 6 | Tin/Lead | | 724-AG20D | 24 | Tin/Lead | |
| 708-AG10D | 8 | Gold | | 724-AG410D | 24 | Gold | |
| 708-AG20D | 8 | Tin/Lead | .300 (7,62) | 724-AG420D | 24 | Tin/Lead | .400 (10,16) |
| 714-AG10D | 14 | Gold | | 724-AG30D | 24 | Gold | |
| 714-AG20D | 14 | Tin/Lead | | 724-AG40D | 24 | Tin/Lead | |
| 716-AG10D | 16 | Gold | .300 (7,62) | 728-AG30D | 28 | Gold | .600 (15,24) |
| 716-AG20D | 16 | Tin/Lead | | 728-AG40D | 28 | Tin/Lead | |
| 718-AG10D | 18 | Gold | | 732-AG30D | 32 | Gold | |
| 718-AG20D | 18 | Tin/Lead | .300 (7,62) | 732-AG40D | 32 | Tin/Lead | .600 (15,24) |
| 720-AG10D | 20 | Gold | | 736-AG30D | 36 | Gold | |
| 720-AG20D | 20 | Tin/Lead | | 736-AG40D | 36 | Tin/Lead | |
| 722-AG10D | 22 | Gold | .400 (10,16) | 740-AG30D | 40 | Gold | .600 (15,24) |
| 722-AG20D | 22 | Tin/Lead | | 740-AG40D | 40 | Tin/Lead | |
| 722-AG310D | 22 | Gold | .300 (7,62) | | | | |
| 722-AG320D | 22 | Tin/Lead | | | | | |

Need more technical information?

Contact your local ABE office or
<http://www.AboveBoardElectronics.com>