

Dip Switches “End to End Stackable” Through Hole and Surface Mount

GD Series

FEATURES:

- Conventional gold wiping contact system
- Available in PC and surface mount configurations
- Traditional tape seal standard
- 95% Minimum solder coverage (90/10 tin lead)
- Withstands wave soldering temperature of 245°C for 3-5 seconds
- Heat deflection temperature of 260°C for surface mount compatibility
- End stackable (GDS version)
- Auto-insertable (GDS and GDB version)
- Vacuum pick and place compatible (GDS, GDB and GDH)
- Half pitch .050” terminal spacing (GDH version)
- Available in optional tape & reel packaging

ENVIRONMENTAL SPECIFICATIONS:

Operating Temperature..... -30°C to +85°C
 Storage Temperature..... -45°C to +100°C
 Solder Heat Resistance See page M6-7

MATERIAL SPECIFICATIONS:

Moving Contact Gold over nickel over copper alloy
 Fixed Contact..... Gold over copper alloy
 Base Material PPS UL94V-0
 Cover Material PPS UL94V-0
 Actuator Material High temperature polyester/polyamide
 Terminal Tin lead plated over nickel over copper alloy

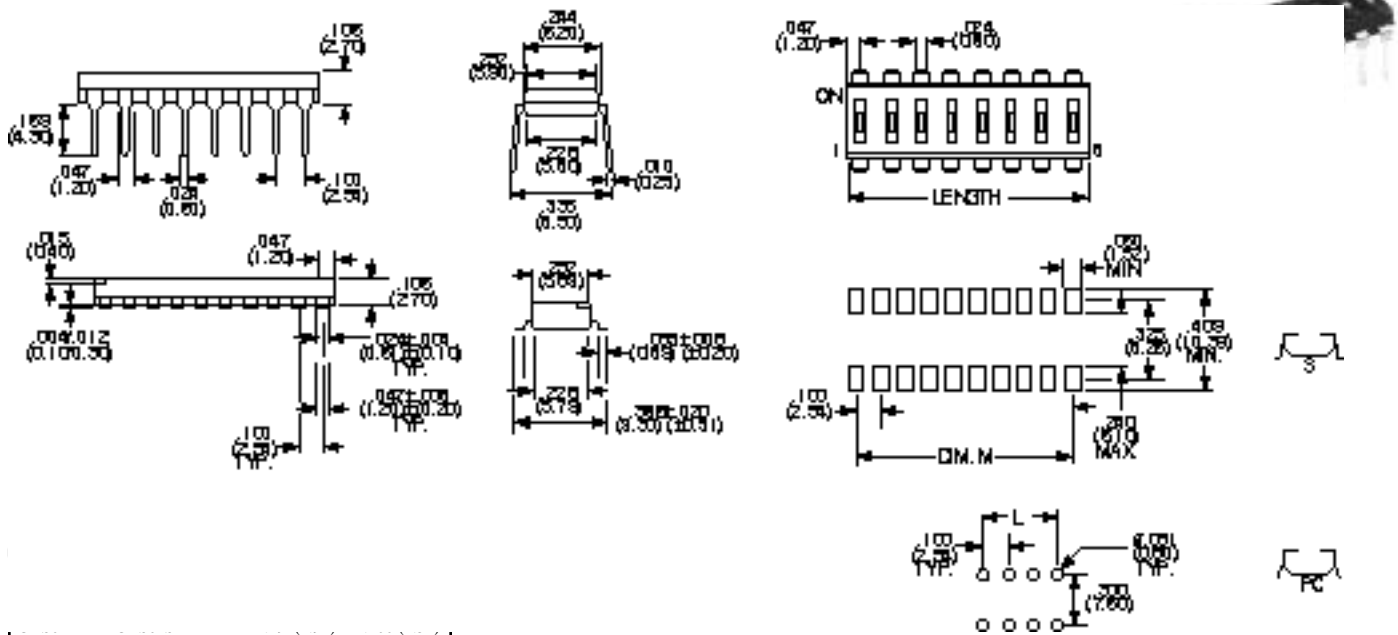
TYPICAL PERFORMANCE CHARACTERISTICS:

Contact Rating 0.4 VA 25ma @ 24 VDC
 Initial Contact Resistance..... 100 Milliohms max.
 Insulation Resistance 100 Megohms min. @ 250 VDC
 Dielectric Strength 300 VAC
 Life Expectancy 1,000 Cycles
 Operating Force 60-600 Grams

End to End Stackable!

GDS

Low Profile Slide Actuator



GDS04	GDS04S	4	.394(10.02)	.300(7.62)
GDS06	GDS06S	6	.594(15.10)	.500(12.7)
GDS08	GDS08S	8	.794(20.18)	.700(17.78)
GDS10	GDS10S	10	.994(25.26)	.900(22.86)

See pages M2-M4 for application specific indexing.

Need more technical information?

Contact your local ABE office--(800) 453-1692--or AboveBoardElectronics.com

Above Board Electronics
 1918 Junction Avenue
 San Jose, CA 95131

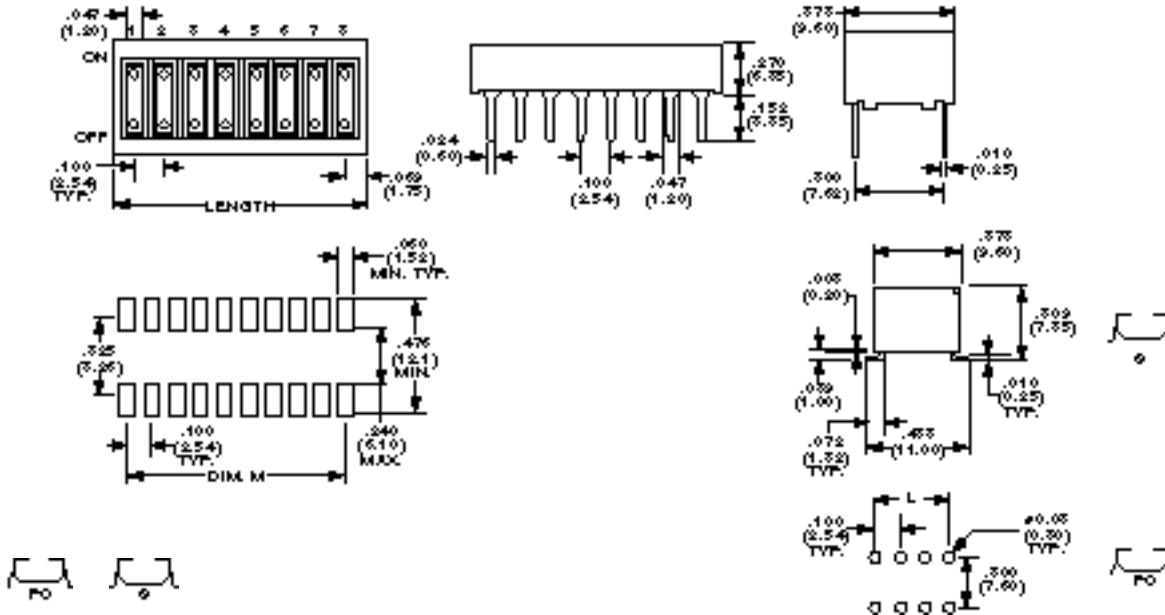
Dip Switches "Recessed Rocker" Surface Mount "Half Pitch" .050" Low Profile

GD Series

GDR
Classic Profile
Recessed Rocker Actuator



GDR08

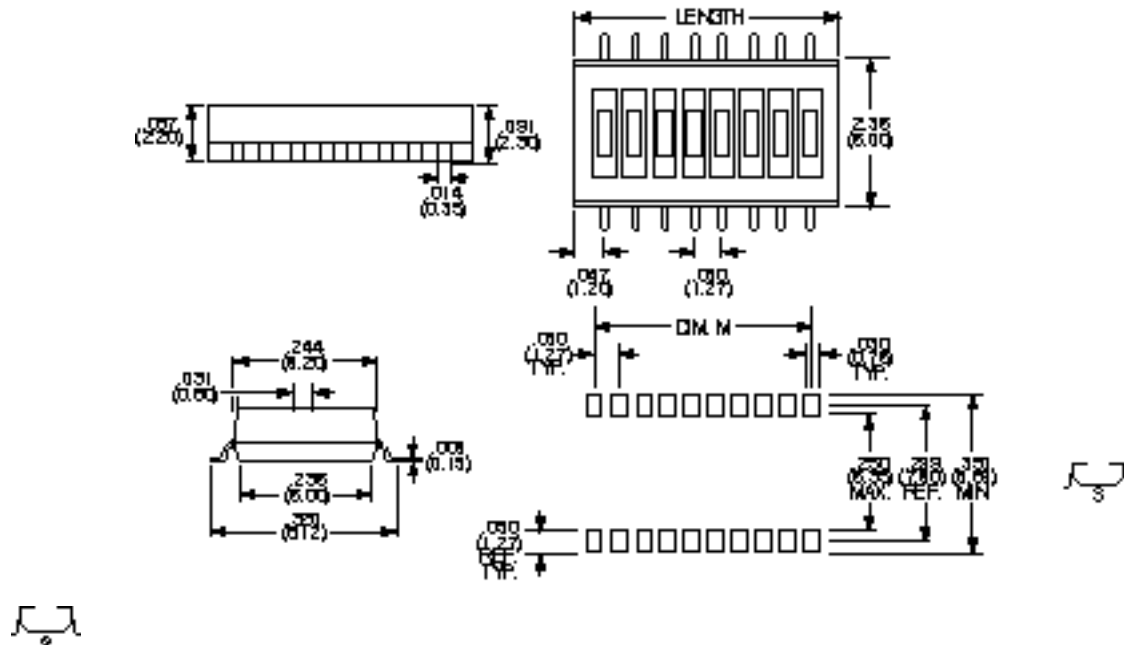


PC Model	S Model	Poles	Length	Dim. M
GDR02	GDR02S	2	.238(6.04)	.100(2.54)
GDR04	GDR04S	4	.438(11.12)	.300(7.62)
GDR06	GDR06S	6	.638(16.20)	.500(12.70)
GDR08	GDR08S	8	.838(21.28)	.700(17.78)
GDR10	GDR10S	10	1.038(26.36)	.900(22.86)

GDH
If Pitch .050" Terminal Spacing



GDH08S



S Model	Poles	Length	Dim. M
GDH02S	2	.144(3.66)	.050(1.27)
GDH04S	4	.244(6.20)	.150(3.81)
GDH06S	6	.344(8.75)	.250(6.35)
GDH08S	8	.444(11.29)	.350(8.89)
GDH10S	10	.544(13.82)	.450(11.43)

Need more technical information?

Contact your local ABE office--(800) 453-1692--or AboveBoardElectronics.com

Above Board Electronics
1918 Junction Avenue
San Jose, CA 95131

