

Carlton®

**Carlton®
Floor Boxes**

In this section...



Carlton® Floor Boxes

Residential Floor Boxes — Adjust-A-Box®	A-198–A-199
Residential Floor Boxes — Drop In	A-200–A-202
Rectangular Floor Boxes	A-203–A-205
Round Floor Boxes	A-206–A-208
Recessed Pop-Up Receptacle	A-209
Retractable Work Surface Receptacle	A-210



Thomas & Betts

www.tnb.com

Residential Floor Boxes — Adjust-A-Box®

Adjust-A-Box® 1- and 2-Gang Adjustable Residential Floor Boxes

Carlton® Adjust-A-Box® Floor Boxes make installing floor outlets fast and easy by providing maximum installation flexibility. The box features an adjustment screw designed to adjust the box from 0" to 1¼" by simply turning the screw clockwise or counterclockwise, providing a flushmount every time.

Covers are available in three types: non-metallic, brass and stainless steel. They feature two hinged doors to protect unused devices and to keep out dust and scrubwater. Because the doors are attached, they won't get lost or misplaced while the outlet is in use.

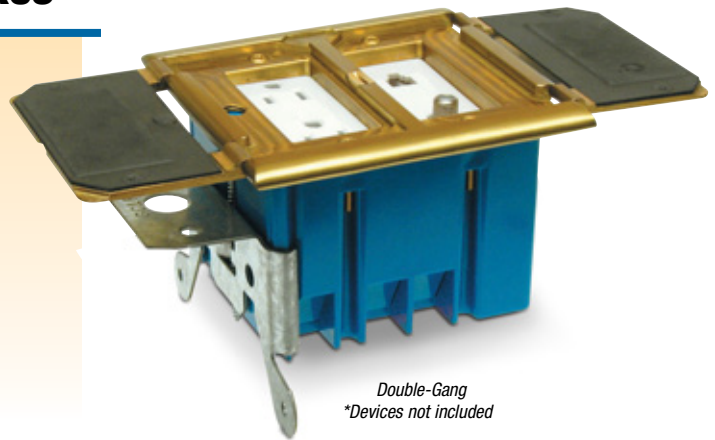
The Adjust-A-Box® is available in two sizes, single-gang and double-gang. The single-gang box has a 20 cubic inch capacity and includes a duplex receptacle, and the double-gang box has a 34 cubic inch capacity, and comes with a divider for dual-voltage capabilities.

Carlton® Adjust-A-Box® Residential Floor Boxes are ideal for residential and home office applications and provide a clean, aesthetically pleasing floor outlet anywhere you need it.

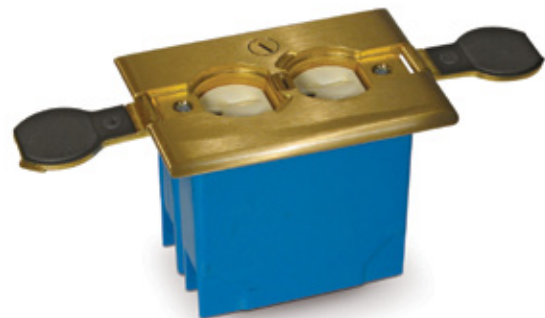
Features:

- Listed floor boxes in accordance to section 314.27(B) of the NEC®
- Adjustment screw adjusts depth (from 0" to 1¼")
- Cover options include: non-metallic, brass and stainless-steel covers
- Covers have two (non-removable) hinged doors
- Solid brushed-brass and stainless-steel covers with a light lacquer finish for extra protection
- Non-metallic covers are available in white and ivory (single-gang box only)
- Two-gang version features dual-service capabilities (requires use of dual-service divider)
- Integral cable clamps
- Ideal for new work and retrofit applications
- UL® Listed
- UL® scrubwater tested

NEC and National Electrical Code are registered trademarks of the National Fire Protection Association, Inc.



Double-Gang
*Devices not included



Single-Gang

Residential Floor Boxes — Adjust-A-Box®

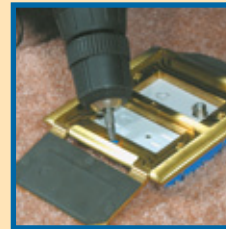
Adjust-A-Box® Installation 1- and 2-Gang



1 Install clip over subfloor.



2 Screw in to adjust to height of flooring or carpet.



3 Beautiful flush fit every time!

Kits include:

Single-Gang

Ivory/White Cover:

- Two (2) 6-32 x 1 flat head machine screws
- Four (4) #6 1¼ self-tapping flat head screws
- Two (2) #6 1½ drywall screws
- One (1) cover plug
- One (1) New Work Bracket
- One (1) Old Work Bracket
- One (1) 20 cubic in. UL Listed Floor Box
- One (1) UL Listed Floor Cover
- One (1) short shank receptacle (tamper proof)
- One (1) tube Dow Corning #4 sealant
- Installation instructions

Brass & Stainless Steel Covers:

- Two (2) 6-32 x 1 plated flat head machine screws
- Four (4) #6 1¼ self-tapping flat head screws
- Two (2) #6 1½ drywall screws
- One (1) New Work Bracket
- One (1) Old Work Bracket
- One (1) 20 cubic in. UL Listed Floor Box
- One (1) UL Listed Floor Cover
- One (1) short shank receptacle
- Green ground wire
- Installation instructions

Double-Gang

- One (1) New Work Bracket
- One (1) Old Work Bracket
- One (1) 34 cubic in. UL Listed Floor Box
- One (1) Dual-Voltage Divider
- One (1) UL Listed Floor Cover
- Four (4) #6-32 x 1" flat head machine screws
- Four (4) #6 x 1¼" flat head self-tapping screws
- Two (2) #6 x 1½" square drive trim head screws
- Green ground wire
- Installation instructions



*Devices not included



E11461

CAT. NO.	SIZE	COVER	CUBIC IN.	STD. CTN.	STD. WT. (LBS.)
Non-Metallic					
B121BFRW	One-Gang	White	20	8	7.1
B121BFBR	One-Gang	Ivory	20	8	6.9
Brass					
B121BFBB	One-Gang	Brass	20	8	15.0
B234BFBB	Two-Gang	Brass	34	4	10.7
Stainless Steel					
B121BFSS	One-Gang	Stainless Steel	20	8	13.7
B234BFSS	Two-Gang	Stainless Steel	34	4	9.8

Residential Floor Boxes — Drop In

Carlton® Structured Cable Management Systems... Your Total Systems Solution!

Low-Voltage Adjustable Floor Bracket with Cover

The Carlton® Low-Voltage Adjustable Floor Bracket is specifically designed for the low-voltage, structured cabling market...the floor bracket is industry-standard orange to identify low-voltage applications, the open design provides the space needed for low-voltage bend-radius requirements and the Leviton QuickPort® Quad 106® Insert provides up to four low-voltage outlet ports. The Carlton® Low-Voltage Adjustable Floor Bracket is ideal for any residential or commercial low-voltage application.

The floor bracket also features a unique screw design, enabling it to be adjusted to most finished floor heights by simply turning the screw clockwise or counterclockwise and adjusting flush to the floor.

The floor bracket kit comes complete with a non-metallic (white or ivory) or brass cover, a Leviton QuickPort® Quad 106® Insert, new work and old work metal mounting brackets and mounting screws.



- White, ivory or brass cover
- Orange — identifies low-voltage installations
- Open design floor bracket — accommodates low-voltage bend-radius requirements
- Adjustable screw — bracket adjusts to most finished floor depths
- Leviton QuickPort® Quad 106® insert — install up to 4 low-voltage inserts
- Two-door design
- cUL–US Listed

Installation



Install clip over subfloor.



Screw in to adjust to height of flooring or carpet.



Beautiful flush fit every time!



CAT. NO.	COVER	STD. CTN.	STD. WT. (LBS.)
SC100FBWC	Non-Metallic — White	8	5.62
SC100FBVC	Non-Metallic — Ivory	8	5.62
SC100FBBC	Brass	8	13.78

Residential Floor Boxes — Drop In

Drop-In Floor Box

The Carlton® Drop-In Floor Box with Brass Cover combines many of the same features of our existing Floor Box line with the strength, durability and style necessary to accommodate today's residential electrical/telecommunication needs.

The Carlton® Drop-In Floor Box is the fastest, easiest way for contractors to put a floor socket anywhere they need it! It's designed to accommodate high- and low-voltage applications and comes complete with everything needed for installation — floor box, brass cover, hole saw, wired receptacle, two-hole low-voltage plate, blank plate, mounting screws and wire nuts.

Note: The Drop-In Floor Box is available with or without a hole saw.



Boxes & Covers — Carlton® Floor Boxes

Features:

- Single hole installation
- Fast, easy installation
- Cover options include: Brass and Aluminum
- Accommodates high- and low-voltage applications
- Includes single-gang grounded receptacle, low-voltage telephone/cable plate (data jacks not included) and blank plate for custom installations
- Tamper-resistant receptacle
- Available with or without a hole saw
- 11.8 inch cubic capacity
- For wood floor installations
- Ideal for residential and home offices
- Eliminates the need for extension cords
- Superior aesthetics — ideal for home offices and entertainment rooms
- cUL–US Listed floor box in accordance with section 314.27(B) of the NEC®
- 2.25" installation hole diameter

NEC and National Electrical Code are registered trademarks of the National Fire Protection Association, Inc.

Residential Floor Boxes — Drop In

Drop-In Floor Box Installation:

NOTE: TURN POWER OFF BEFORE INSTALLATION.



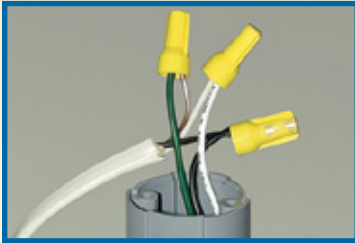
1 Cut 2½" hole through carpeting before using hole saw.



2 Drill hole in floor using hole saw.



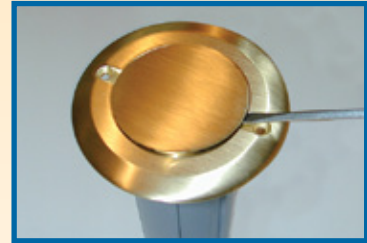
3 Pull romex through floor.



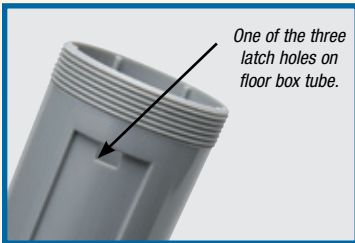
4 Connect receptacle wires to romex. Be sure to match wire color(s).



5 Secure wire clamp on bottom of tube.



6 Brass cover snaps into place. Use a small screwdriver to pry open brass cover to plug in appliance.

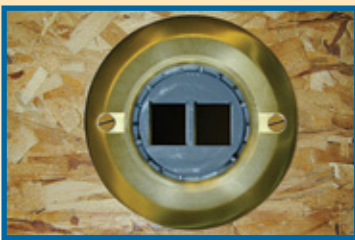


7 Align the three latches on the low-voltage plate with the three latch holes in the round floor box tube.



8 Remove receptacle by pressing three tabs located on side of tube. Remove receptacle by pressing three tabs located on side of tube.

Installed:



CAT. NO.	COVER	DESCRIPTION	STD. CTN.	STD. WT. (LBS.)
E971FBDI-2	Brass	Drop-In Floor Box with Hole Saw	5	6.5
E971FBDIB-2	Brass	Drop-In Floor Box without Hole Saw	20	17.6
E971FADI-2	Aluminum	Drop-In Floor Box with Hole Saw	5	5.1
E971FADIB-2	Aluminum	Drop-In Floor Box without Hole Saw	20	12.0

Rectangular Floor Boxes

1-, 2- and 3-Gang Rectangular Floor Box

Carlton® Rectangular Floor Box Systems — three-way power, data and communications plus easy double- or triple-gang, too.

Compared to metal boxes, Carlton® rectangular floor boxes cost less and install faster to save you money on every job. Three-in-one power, data and communications capability cuts installation time and cost even more, while simple two- and three-gang modularity gives you the flexibility, installation ease and cost-savings no other non-metallic boxes can match. The covers attach without the use of fasteners, providing a professional, clean installation as well as preserving the aesthetic life of the product. Take a closer look at all that our rectangular floor box systems offer you.



Features:

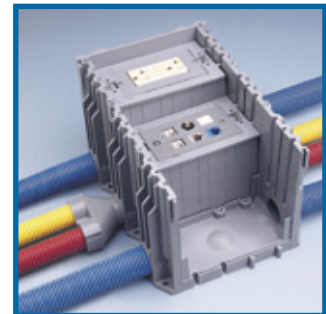
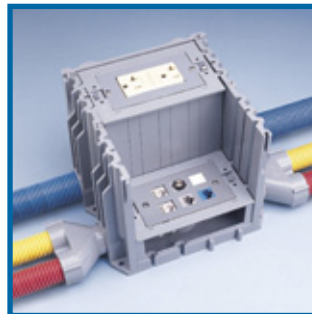
- Covers require no adjusting collar — two screws ensure a flush, secure installation
- Non-metallic PVC construction, watertight gasket and corrosion-resistant hardware ensure long life and reliable performance, even in harsh and/or corrosive environments
- One consistent box depth simplifies ordering time and reduces inventory
- Saves time and money on installations with simple saw cut to floor level
- Concrete tight and suitable for any on-grade/ below-grade application; concrete or wood subfloor construction approved
- Convenient cubic inch capacity markings on inside enable easy inspection
- PVC-molded ports and reducer plugs included
- Accepts 1/2", 3/4" and 1" conduit, tubing or raceway
- Rectangular sides are drillable
- For tile and carpet applications
- Cover options include solid brass, stainless steel and non-metallic (brown, slate and caramel)
- UL® scrubwater tested, approved for all types of finish flooring

Rectangular Floor Boxes

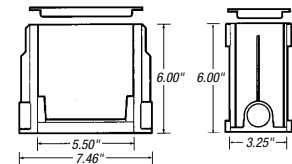
Gangable Rectangular Floor Box

Installation:

With our rectangular boxes, one SKU is all you ever need. Simply remove appropriate sides and slide boxes together to create two- or three-gang boxes for on-the-job flexibility no competitor offers.



CAT. NO.	MATERIAL	SIZE	INTERNAL VOLUME (CU. IN.)	MIN. CONCRETE DEPTH	HUBS (IN.)	REDUCER PLUGS (IN.)	STD. CTN.	STD. WT. (LBS.)
E976RFB	PVC	1-Gang	97.4 (16.8 per inch of depth)	3½	(2) 1	(2) 1 x ¾ (2) ¾ x ½	3	6.92



Activation Kit

Activation kit provides components to accommodate all standard power, data and communications devices, plus a divider to separate power from data and communications — all in a single SKU. Device yokes can be adjusted to store excess cord in the box.

CAT. NO.	MATERIAL	STD. CTN.	STD. WT. (LBS.)
E976AK2	PVC	3	2.47



Rectangular Floor Boxes

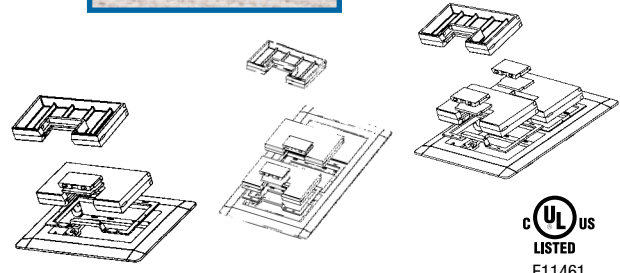
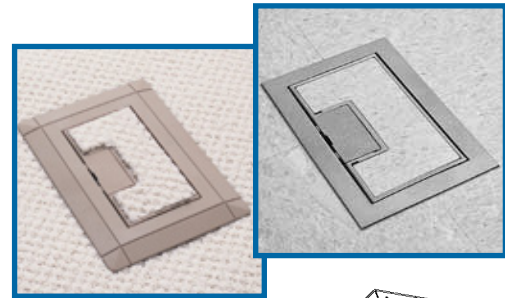
1-, 2- and 3-Gang Non-Metallic Floor Box Covers

On-the-job flexibility extends to our rectangular box covers. Each one-, two- or three-gang cover is suitable for any wiring application and can be used with any floor surface. Non-metallic covers are even field-reversible for tile or carpet. Double-door feature enables easy access to the device and helps keep stray cords organized.

Carlton® Rectangular Floor Box Covers do not require a separate carpet flange. The carpet flange is part of the cover and may be removed for tile application.

Features:

- High-impact resistant thermoplastic
- Field reversible for tile or carpet
- Gasketed for a watertight seal
- Double-door design
- For tile and carpet applications
- UL scrubwater tested



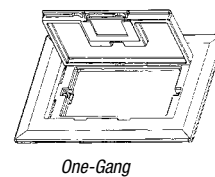
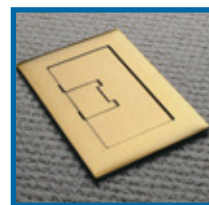
CAT. NO.	SIZE	COLOR	CARPET FLANGE	DIMENSIONS (W X L) (IN.)	STD. CTN.	STD. WT. (LBS.)
E9761B	One-Gang	Brown	Included	7.13 x 5.00	3	1.7
E9762B	Two-Gang	Brown	Included	7.13 x 8.25	9	8.5
E9763B	Three-Gang	Brown	Included	7.13 x 11.50	6	7.5
E9761C	One-Gang	Caramel	Included	7.13 x 5.00	3	1.7
E9762C	Two-Gang	Caramel	Included	7.13 x 8.25	9	8.5
E9763C	Three-Gang	Caramel	Included	7.13 x 11.50	6	7.5
E9761S	One-Gang	Slate	Included	7.13 x 5.00	3	1.7
E9762S	Two-Gang	Slate	Included	7.13 x 8.25	9	8.5
E9763S	Three-Gang	Slate	Included	7.13 x 11.50	6	7.5

1-, 2- and 3-Gang Solid Brass and Stainless Steel Floor Box Covers

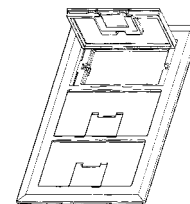
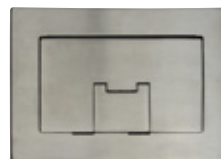
Carlton® Brass and Stainless Steel Rectangular Floor Box Covers add a classic touch to all floor box installations, and are particularly suited for use in high-traffic areas because of the resistance to wear. The gasket gives a watertight seal, and the light lacquer finish provides extra protection.

Features:

- Rugged construction
- Coated with a light lacquer finish for extra protection
- Covers include a cord door
- Gasketed for watertight applications
- Accepts single, duplex, GFCI and low-voltage receptacles
- For tile and carpet applications
- UL scrubwater tested



One-Gang



Two-Gang

Three-Gang



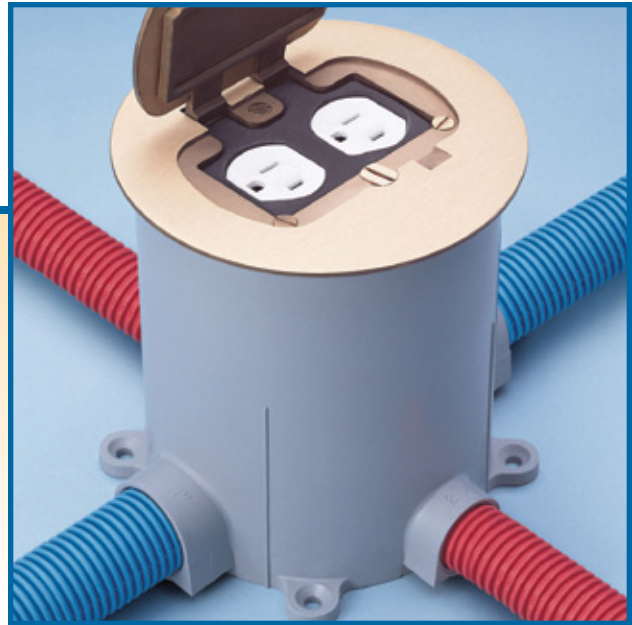
CAT. NO.	SIZE	COLOR	STD. CTN.	STD. WT. (LBS.)
E9761BR	One-Gang	Brass	3	6.8
E9762BR	Two-Gang	Brass	3	9.9
E9763BR	Three-Gang	Brass	3	12.1
E9761SS	One-Gang	Stainless Steel	3	7.4
E9762SS	Two-Gang	Stainless Steel	3	11.6
E9763SS	Three-Gang	Stainless Steel	3	17.2
Rectangular Floor Box Activation Kit				
E976AK2	—	—	3	1.3

Round Floor Boxes

Three-way versatility for power, data and communications.

Carlton® Round Floor Box Systems

Carlton® round floor boxes give you the same cost-saving advantages over metal boxes as our rectangular boxes. By combining power, data and communications in the same box, you can dramatically reduce your installation time and cost compared to other non-metallic boxes. In addition, multi-use covers mean fewer SKUs to deal with and greater jobsite flexibility to increase your savings further. Take a closer look at all their advantages.



Features:

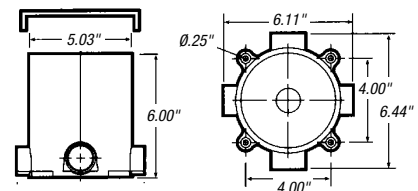
- Non-metallic PVC construction, watertight gasket and corrosion-resistant hardware ensure long life and reliable performance, even in harsh and/or corrosive environments
- Covers are available for a variety of applications
- The same box depth simplifies ordering and reduces inventory
- For tile and carpet applications
- Cover options include: Brass, Stainless Steel and Non-Metallic (Ivory, Caramel, Taupe, Slate and Brown)
- Concrete tight and suitable for any on-grade/below-grade application; concrete or wood floor construction approved
- Y-connector (E972Y) enables you to feed parallel runs of 3/4" conduit or to feed in/out from the same side for increased wiring flexibility and faster installation
- PVC-molded ports and reducer plugs included
- Accepts 1/2", 3/4" and 1" conduit, tubing or raceway
- UL scrubwater tested, approved for all types of finish flooring

Round Floor Box

Carlton® Round Floor Boxes enable various thicknesses of concrete pours. Trim out is easy — just use a handsaw to cut off box at desired height to accommodate carpet, tile or other flooring. Carlton® leveling ring guarantees a level top every time, even if the box is tipped slightly during the pouring process.



CAT. NO.	INTERNAL VOLUME (CU. IN.)	MIN. CONCRETE DEPTH (IN.)	HUBS (IN.)	REDUCER PLUGS (IN.)	STD. CTN.	STD. WT. (LBS.)
E971FB	90.0 (15.5 per inch of depth)	3½	(2) 1 and (2) ¾	(2) 1 x ¾ and (2) ¾ x ½	10	15.6



Round Floor Boxes

Accessories

Multi-Service Divider Kit

The Multi-Service Divider Kit for separate power, data and communications compartments provides unbeatable flexibility and money-saving installation speed.

For use with non-metallic boxes only.



CAT. NO.	STD. CTN.	STD. WT. (LBS.)
E973K	10	3

3/4" Y Fitting

The 3/4" Y Fitting provides for in-and-out service from a single 1" port, and provides two 3/4" parallel conduit runs to adapt into a single-conduit body port.



CAT. NO.	STD. CTN.	STD. WT. (LBS.)
E972Y	10	2.1

Reducer Plugs



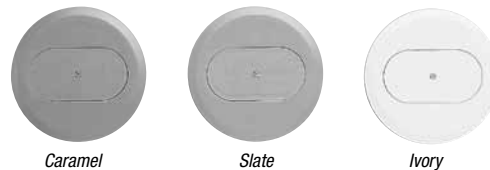
CAT. NO.	SIZE (IN.)	STD. CTN.	STD. WT. (LBS.)
E971C	3/4 x 1/2	100	2.1
E971D	1 x 3/4	100	3.2

Non-Metallic Covers for Round Floor Boxes



Features:

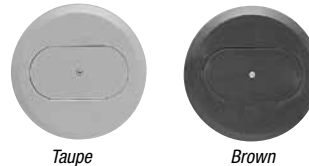
- High impact-resistant thermoplastic
- Compatible with standard NEMA Duplex and 1 1/4" NPS receptacles
- Drill points (3/8") provided for low-voltage cable pass throughs
- 1 1/4" NPS plugs may be modified to accept smaller fittings (3/8", 1/2" and 3/4")
- For tile and carpet applications
- UL scrubwater tested, approved for all types of finish flooring



Caramel

Slate

Ivory



Taupe

Brown



Duplex Covers

CAT. NO.	COLOR	DESCRIPTION	STD. CTN.	STD. WT. (LBS.)
E97DSI	Ivory	Duplex Cover	10	5.2
E97DSC	Caramel	Duplex Cover	10	5.7
E97DST	Taupe	Duplex Cover	10	5.7
E97DSS	Slate	Duplex Cover	10	5.6
E97DSB	Brown	Duplex Cover	10	5.8

1 1/4" NPS Covers

CAT. NO.	COLOR	DESCRIPTION	STD. CTN.	STD. WT. (LBS.)
E97SSRB	Brown	NPS Cover	10	3.8
E97SSRC	Caramel	NPS Cover	10	3.8
E97SSRS	Slate	NPS Cover	10	3.8

Clear Cover Carpet Ring

CAT. NO.	COLOR	STD. CTN.	STD. WT. (LBS.)
E97CCR	Clear	10	1.2

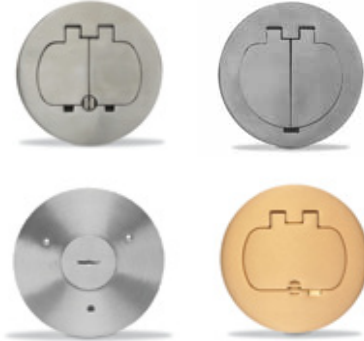
Round Floor Boxes

Brass and Stainless Steel Covers for Round Floor Boxes



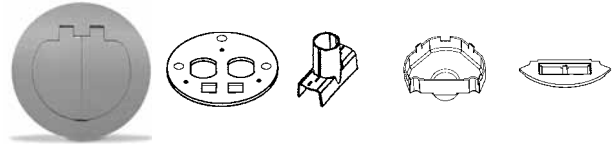
Features:

- Screws concealed under doors
- Rugged construction
- Coated with a light lacquer finish for extra protection
- Resistance to wear — suited for high-traffic areas
- Gasketed for watertight applications
- Available in four styles — Single Door, Two Door, NPS Opening and Two-Door Dual Service
- For tile and carpet applications
- UL scrubwater tested



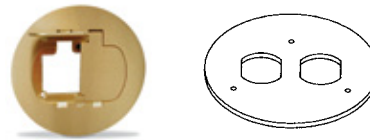
Two-Door Dual Service (Divider Kit included)

CAT. NO.	COVER	DEVICES	STD. CTN.	STD. WT. (LBS.)
E97BR2D	Brass	Duplex and Two Data Ports	5	9.2
E97SS2D	Stainless Steel	Duplex and Two Data Ports	5	9.1



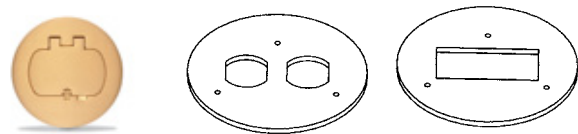
Two Door

CAT. NO.	COVER	DEVICES	STD. CTN.	STD. WT. (LBS.)
E97BR2	Brass	Duplex	5	7
E97SS2	Stainless Steel	Duplex	5	7.7



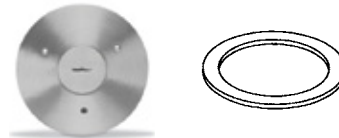
Single Door

CAT. NO.	COVER	DEVICES	STD. CTN.	STD. WT. (LBS.)
E97BR	Brass	GFCI and Duplex	5	7
E97SS	Stainless Steel	GFCI and Duplex	5	7.9



NPS Opening

CAT. NO.	COVER	DEVICES	STD. CTN.	STD. WT. (LBS.)
E97BRG	Brass	1¼" Outlet and Single Receptacle	5	7.5
E97SSG	Stainless Steel	1¼" Outlet and Single Receptacle	5	8.1



Metal Cover Adapter Ring

CAT. NO.	DEVICES	STD. CTN.	STD. WT. (LBS.)
E97ABR2	One-Piece Metal Cover Adapter	5	9.2



Note: Carlton® metal cover adapter ring (E97ABR2) is required with these covers (sold separately).

Recessed Pop-Up Receptacle

Concealed receptacle provides a safe and aesthetic solution for countertop power.

NEW!

Recessed Pop-Up Receptacle

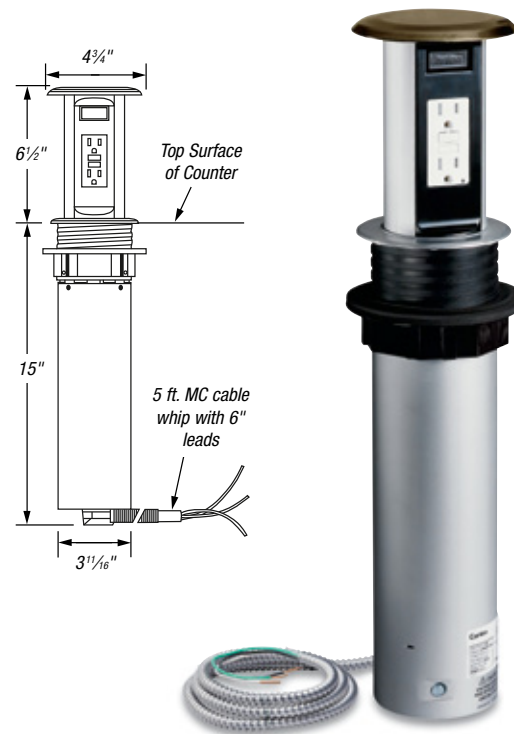
Now you can provide power for small appliances on kitchen island counter tops safely and conveniently with the new Carlon® Recessed Pop-Up Receptacle. When not in use, the receptacle remains concealed beneath the counter, showing only a stylish nickel, bronze or brass cover. Simply press down slightly on the cover to release the latch, and the Recessed Pop-Up Receptacle rises, revealing a duplex GFCI outlet. The Pop-Up Receptacle can also be mounted in bath counters or other work surfaces.

In addition to promoting safety by eliminating hanging power cords and providing a tamper-resistant GFCI receptacle, the Recessed Pop-Up Receptacle also includes gaskets under the flange and around the main body to prevent spilled liquids from entering the electrical enclosure, regardless of whether the receptacle is open or closed. The Recessed Pop-Up Receptacle is the first device to pass the new UL® Spill Test developed specifically for receptacles of this type.



Features

- Provides a duplex GFCI outlet in a kitchen island or peninsula counter for easy access to power for small appliances
- Eliminates the potential safety hazard of power cords hanging over the edge of counters to reach side-mounted outlets
- Meets new UL® and NEC® requirements for receptacles mounted in kitchen counters
- Receptacle remains recessed below counter when not in use
- To access outlet, simply press down on cover and the receptacle pops up
- Cover available in three finishes to match any kitchen décor — nickel, oil-rubbed bronze or brass
- Ideal countertop power solution for kitchens, baths and other work surfaces



Specifications

Cover Size: 4 3/4" diameter
Mounting Hole: 3 3/4" Diameter
Outlet: (1) duplex tamper-resistant GFCI receptacle — 15A, 125VAC, 60Hz, 20A Feed-Through

MC Cable Whip: 12/2 with ground wire, 5' long with 6" leads

Listings/Compliances:
 – UL® 943
 – CSA C22.2 No. 144.1
 – NEC® Article 210.52(C)(5)
 – NEC® Article 406.5(E)

NEC is a registered trademark of the National Fire Protection Association, Inc.



CAT. NO.	DESCRIPTION	STD. PKG. QTY.
KPR-15G-NKL	Recessed Pop-Up Receptacle with Duplex GFCI and Nickel Finish Cover	1
KPR-15G-BRZ	Recessed Pop-Up Receptacle with Duplex GFCI and Oil-Rubbed Bronze Finish Cover	1
KPR-15G-BRS	Recessed Pop-Up Receptacle with Duplex GFCI and Brass Finish Cover	1

www.tnb.com

United States
 Tel: 901.252.8000
 800.816.7809
 Fax: 901.252.1354

Technical Services
 Tel: 888.862.3289



Request Info

1-800-453-1692

www.aboveboardelectronics.com

Thomas & Betts

Retractable Work Surface Receptacle

Concealed receptacle provides safe and convenient desktop power.

Retractable Work Surface Receptacle

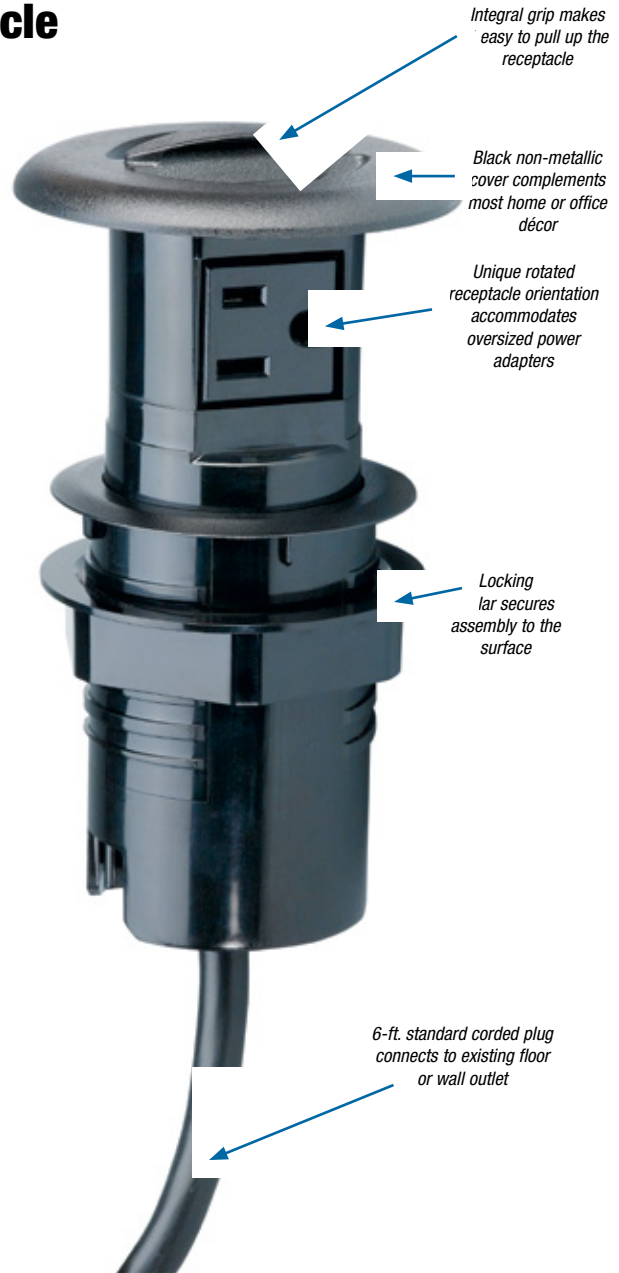
With the variety of electronics and powered devices today, convenient power outlets in the home and office are critical. While phone chargers, laptops, appliances and other devices are typically located on work surfaces, outlets are often located underneath the work surface, along the wall or on the floor. Repeatedly accessing these outlets is an inconvenience and poses safety hazards.

The new Carlton® Retractable Work Surface Receptacle provides a convenient outlet right where you need it. A hole saw is included that attaches to your power drill to quickly mount the receptacle in a counter, desk or similar work surface. A 6-ft. cord connects to an existing wall or floor outlet, so no wiring is required. Simply pull up the receptacle's cover to raise the unit above the work surface and plug in a device. When not in use, push the cover down to store the receptacle below the work surface. The non-metallic cover is black to complement most home or office decor.

- Provides easy access to a power outlet — simply pull up the receptacle to plug in a device
- 6-ft. cord plugs into an existing floor or wall outlet
- Receptacle remains hidden below work surface when not in use
- Compact design occupies minimal space both when recessed and while in use
- Rotated receptacle orientation accommodates oversized power adapters
- Hole saw included
- cULus Listed, File Number E340129 (per UL® 962A, Furniture Power Distribution Units)



NEW!



CAT. NO.	DESCRIPTION	STD. PKG. QTY.
RWSR	Recessed Pull-Up Receptacle, Black, 6 ft. cord with three-prong plug	1