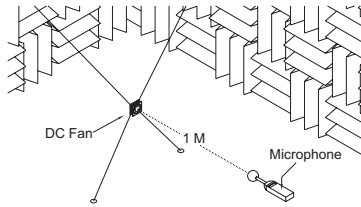


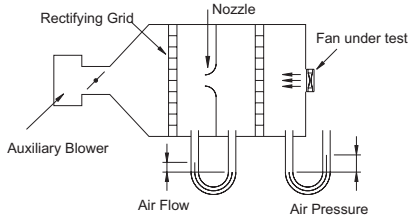
NOTE

1. NOISE IS MEASURED AT RATED VOLTAGE IN ANECHOIC CHAMBER IN FREE AIR WITH B&K SOUND LEVEL METER WITH MICROPHONE AT A DISTANCE OF ONE METER FROM THE FAN INTAKE BY REFERRING TO ANSI-S10.12 AS BELOW:

FULL ANECHOIC CHAMBER LEVEL
 Full Anechoic Chamber for ISO 3745
 Residual Background Noise Level: 15.0 dB(A)
 Lowest Cutoff Frequency (Fco): 80 Hz

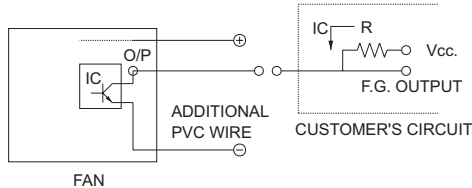


2. THE PERFORMANCE INCLUDING AIR FLOW AND AIR PRESSURE MEASURED AT RATED VOLTAGE IN DOUBLE CHAMBER IS MEASURED ACCORDING TO AMCA 210 STANDARD AS BELOW:



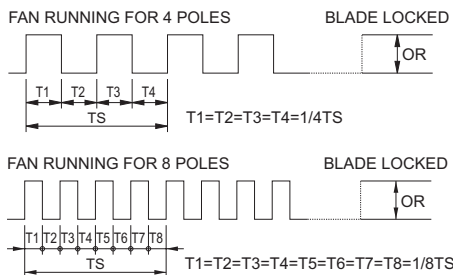
3. FREQUENCY GENERATOR O/P: (F00)

Frequency generator function is activated by an internal IC for customer's application.
 Electrical schematic:



CUSTOMER'S CIRCUIT
 V_{cc} = From +5 To +28 VDC (Generally using +12 or +24 VDC)
 I_c = 2 mA max.
 $R = V/I$ (Output "R" value calculation)

■ SUPPLY A WAVEFORM:

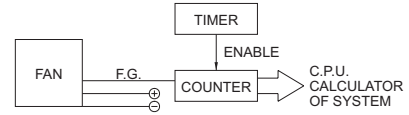


$N=R.P.M.$ (Rotation speed will be different for various models LL/L/M/H/HH/VH/SH)
 $TS=60/N$ (Sec)

- * Voltage level after blade locked
- * 4 POLES FOR THE 40 MM MIN.
- * 8 POLES FOR OTHERS. (SMALLER THAN 40 MM)

■ **OUTPUT LEVEL:**
 High = $V_{cc} \pm 10\%$
 Low = 0-0.6V
 I_c = 2mA max.

■ **APPLICATION:**

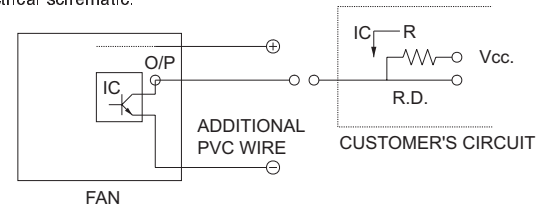


■ **FUNCTION:**

- By means of the waveform & customer's design schematic, can reach alarm function, either buzzing or LED flashing.
- Adjust rotation speed.
 When power supply output voltage level decreases, it will result in lowering fan rotation speed. The irregular situation will be controlled by using F.G. O/P through P/S circuit to increase the output voltage and result in stable rotation speed.

4. ROTATION DETECTOR O/P (R00)

Rotation detector function is activated by an internal IC for customer's application.
 Electrical schematic:



CUSTOMER'S CIRCUIT
 V_{cc} = From +5 To +28 VDC (Generally using +12 or +24 VDC)
 I_c = 2 mA max.
 $R = V/I$ (Output "R" value calculation)

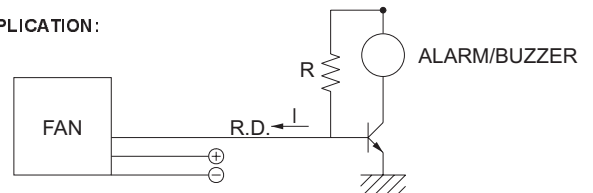
■ **SUPPLY A WAVEFORM:**



■ **OUTPUT LEVEL:**

High = $V_{cc} \pm 10\%$
 Low = 0-0.6V
 I_c = 2mA max.

■ **APPLICATION:**



■ **FUNCTION:**

- By means of the waveform & customer's design schematic, can reach alarm function: either buzzing or LED flashing.