

MOLDED NYLON NUTS

*Available in the following materials:

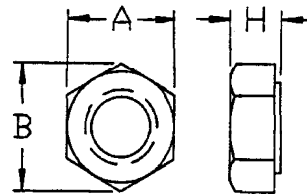
Material Code No.	Material Name
-18	Nylon 6/6, (natural)
-78	Nylon 6/6, (black)

*Available in other materials. See materials list in index.
Other sizes available on request.

NYLON HEX NUT

Part No. **G100** - (Size Code No.) - (Material Code No.)

Size Code No.	Thread Size	A	B	H
-1	2-56	.180	.205	.070
-2	3-48	.180	.205	.070
-3	4-40	.250	.275	.100
-4	6-32	.305	.350	.120
-5	6-40	.305	.350	.120
-6	8-32	.335	.380	.130
-7	10-24	.365	.420	.135
-8	10-32	.365	.420	.135
-9	12-24	.425	.510	.200
-10	1/4-20	.425	.510	.200
-11	1/4-28	.425	.510	.200
-12	5/16-18	.500	.575	.270
-13	3/8-16	.560	.630	.330
-14	3/8-24	.560	.630	.330
-15	7/16-24	.685	.780	.380
-16	7/16-20	.685	.780	.380
-17	1/2-13	.750	.860	.430
-18	1/2-20	.750	.860	.430
-19	5/8-11	.925	1.05	.550
-20	5/8-18	.925	1.05	.550
-21	3/4-10	1.10	1.25	.640
-22	7/8-9	1.30	1.48	.750
-23	1-8	1.47	1.70	.870



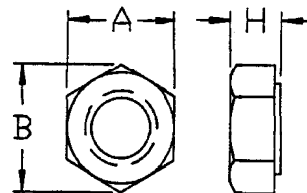
Tolerance on all dimensions +/- .015.

NYLON SPECIAL HEX NUT

(G101's are thicker than G100's.)

Part No. **G101** - (Size Code No.) - (Material Code No.)

Size Code No.	Thread Size	A	B	H
-1	2-56	.180	.205	.090
-2	4-40	.250	.275	.124
-3	6-32	.305	.350	.146
-4	8-32	.340	.390	.170
-5	10-24	.365	.420	.196
-6	10-32	.365	.420	.196
-7	1/4-20	.425	.510	.258



Tolerance on all dimensions +/- .015.

MOLDED NYLON NUTS (continued)

*Available in the following materials:

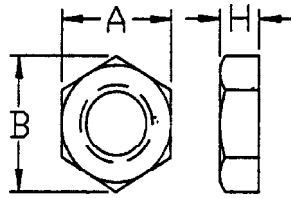
Material Code No.	Material Name
-18	Nylon 6/6, (natural)
-78	Nylon 6/6, (black)

*Available in other materials. See materials list in index.
Other sizes available on request.

NYLON JAM NUT

Part No. **G102** - (Size Code No.) - (Material Code No.)

Size Code No.	Thread Size	A	B	H
-1	5/16-18	.500	.575	.190
-2	5/16-24	.500	.575	.190
-3	3/8-16	.500	.575	.125
-4	3/8-24	.500	.575	.125
-5	3/8-32	.500	.575	.125
-6	7/16-14	.687	.780	.375
-7	7/16-20	.687	.780	.375
-8	1/2-13	.687	.780	.220
-9	1/2-24	.687	.780	.220
-10	1/2-28	.660	.755	.250
-100	9/16-18	.750	.860	.125
-101	5/8-18	.937	.107	.375
-11	3/4-10	1.12	1.26	.250
-110	3/4-16	1.12	1.26	.250
-12	3/4-27	1.00	1.14	.125
-120	7/8-14	1.25	1.43	.405
-121	1-8	1.50	1.73	.340
-122	1/4-18 NPT	.740	8.50	.187
-13	3/8-18 NPT	1.00	1.15	.280
-14	1/2-14 NPT	1.25	1.43	.340
-15	3/4-14 NPT	1.50	1.73	.405
-150	1/4-18 NPS	.687	7.96	.225
-16	3/8-18 NPS	1.00	1.15	.280
-17	1/2-14 NPS	1.25	1.43	.340
-18	3/4-14 NPS	1.50	1.73	.405

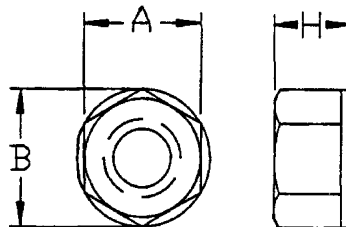


Tolerance on all dimensions +/- .015.

**NYLON LOCK NUT
SELF-THREADING**

Part No. **G103** - (Size Code No.) - (Material Code No.)

Size Code No.	Thread Size	A	B	H
-1	2-56	.180	.205	.140
-2	4-40	.250	.275	.180
-3	6-32	.305	.350	.200
-4	8-32	.335	.380	.230
-5	10-24	.365	.420	.250
-6	10-32	.365	.420	.250
-7	1/4-20	.425	.510	.275



Tolerance on all dimensions +/- .015.

*Available in the following materials:

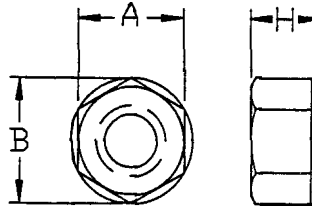
Material Code No.	Material Name
-18	Nylon 6/6, (natural)
-78	Nylon 6/6, (black)

*Available in other materials. See materials list in index.
Other sizes available on request.

NYLON LOCK NUT

Part No. G104 - (Size Code No.) - (Material Code No.)

Size Code No.	Thread Size	A	B	H
-1	2-56	.180	.205	.140
-2	4-40	.250	.275	.180
-3	6-32	.305	.350	.200
-4	8-32	.335	.380	.230
-5	10-24	.365	.420	.250
-6	10-32	.365	.420	.250
-7	1/4-20	.425	.510	.275

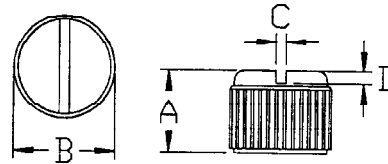


Tolerance on all dimensions +/- .015.

NYLON SLOTTED THUMB NUT

Part No. G105 - (Size Code No.) - (Material Code No.)

Size Code No.	Thread Size	A	B	C	D
-1	4-40	.280	.317	.039	.045
-2	6-32	.334	.348	.044	.051
-3	8-32	.378	.381	.049	.059
-4	10-24	.357	.412	.056	.068
-5	10-32	.357	.412	.056	.068
-6	1/4-20	.383	.492	.070	.088

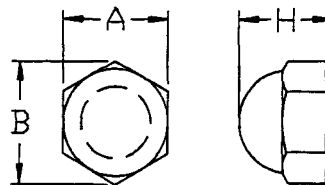


Tolerance on all dimensions +/- .015.

NYLON CAP NUT

Part No. GN106 - (Size Code No.) - (Material Code No.)

Size Code No.	Thread Size	A	B	H
-1	4-40	.250	.275	.280
-2	6-32	.305	.350	.345
-3	8-32	.330	.385	.375
-4	10-24	.365	.420	.400
-5	10-32	.365	.420	.400
-6	1/4-20	.425	.510	.475
-7	1/4-28	.425	.510	.475
-8	5/16-18	.500	.575	.530
-9	3/8-16	.560	.630	.620
-10	1/2-13	.750	.860	.810
-11	5/8-11	.925	1.05	1.00



Tolerance on all dimensions +/- .015.

MOLDED NYLON NUTS (continued)

*Available in the following materials:

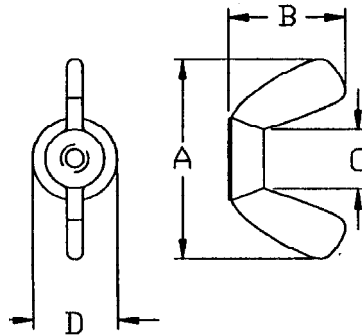
Material Code No.	Material Name
-18	Nylon 6/6, (natural)
-78	Nylon 6/6, (black)

*Available in other materials. See materials list in index.
Other sizes available on request.

NYLON WING NUT

Part No. G107 - (Size Code No.) - (Material Code No.)

Size Code No.	Thread Size	A	B	C	D
-1	4-40	.90	.48	.23	.40
-2	6-32	.90	.48	.23	.40
-3	8-32	.90	.48	.23	.40
-4	10-24	.90	.48	.23	.40
-5	10-32	.90	.48	.23	.40
-6	10-24	1.10	.63	.30	.56
-7	10-32	1.10	.63	.30	.56
-8	1/4-20	1.10	.63	.30	.56
-9	1/4-28	1.10	.63	.30	.56
-10	1/4-20	1.38	.72	.36	.65
-11	1/4-28	1.38	.72	.36	.65
-12	5/16-18	1.38	.72	.36	.65
-13	3/8-16	1.38	.72	.36	.65
-14	7/16-14	1.75	.90	.58	.85
-15	1/2-13	1.75	.90	.58	.85
-16	9/16-12	1.75	.90	.58	.85

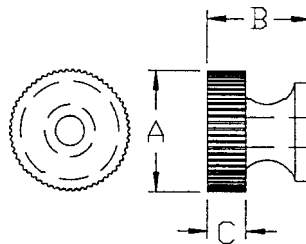


Tolerance on all dimensions +/- .015.

NYLON THUMB NUT

Part No. G108 - (Size Code No.) - (Material Code No.)

Size Code No.	Thread Size	A	B	H
-1	4-40	.300	.280	.120
-2	6-32	.360	.275	.125
-3	8-32	.425	.305	.140
-4	10-24	.425	.325	.140
-5	10-32	.425	.325	.140
-6	1/4-20	.540	.365	.155
-7	5/16-18	.612	.400	.170



Tolerance on all dimensions +/- .015.