

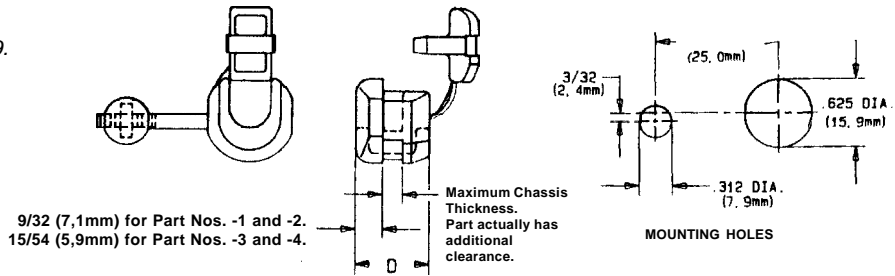
# STRAIN RELIEFS

## For European Requirements

Strain relief device remains attached to the chassis during cable removal or replacement.

Underwriters' Laboratories File #E-15331.  
 Canadian Standards Association File #LR-8919.  
 Flammability classification: 94V-2.  
 Temperature index: 125°C.  
 Maximum temperature: 105°C.

Standard Material and Color: Nylon 6/6, (black)

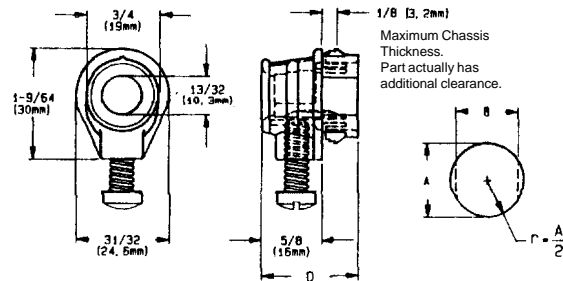


### Part No. C824 - (Size Code No.)

Size Code No. Black White	Fils Cables		Chassis Dimensions						UL/CSA Description	D Body Length	
	Cross Section	Approx. Dia. in. mm	A Mounting Hole Dia. in. mm		B To Prevent Rotation in. mm		Maximum Chassis Thickness in. mm			in.	mm
-1 -2	Round	.300 7,6	.625 15,9	N/A	.125 3,2	SR 6P10 CEE	43/64 17,1				
-3 -4		.325- .360 8,3- 9,1	.625 15,9	N/A	.125 3,2	SR 6P30 CEE	5/8 15,9				

Underwriters' Laboratories File #E-103540.  
 Canadian Standards Association File #LR-81067.  
 VDE Test Report #8838-419-4001/A1J.  
 Flammability classification: 94V-2.  
 Temperature index: 125°C.  
 Maximum temperature: 105°C.

Standard Material and Color: Nylon 6/6, (black)



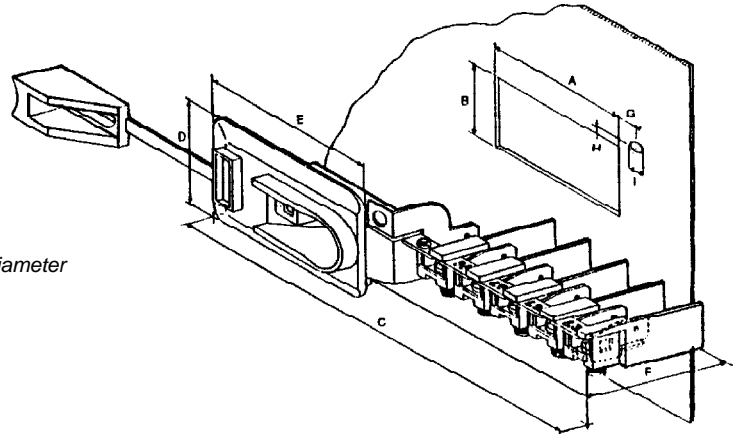
### Part No. C825 - (Size Code No.)

Size Code No. Black	Fils Cables		Chassis Dimensions						UL/CSA Description	D Body Length	
	Cross Section	Approx. Dia. in. mm	A Mounting Hole Dia. in. mm		B To Prevent Rotation in. mm		Maximum Chassis Thickness in. mm			in.	mm
-1	Round or Flat	up to .400 up to 10,2	.875 22,2	.770 19,6	.125 3,2	USR-400	1 25,4				
-3	Flat	.250 x .400 6,1 x 11,9				USR-401					

Strain relief device remains attached to the chassis during cable removal or replacement.

## TERMINAL STRAIN RELIEFS Meets European Requirements

Underwriters' Laboratories File #E-76048.  
 Canadian Standards Association File #LR-40455.  
 VDE Test Report #8721-1440-4013/A1G.  
 Rating: 16 Amps, 380 Volts.  
 Flammability classification: 94V-P  
 Temperature index: 105°C.  
 Fits round or flat cross section cables, .310 (7,8) to .472 (12,0) diameter



Standard Material and Color: Nylon 6, (black)

### Part No. C830 - (Size Code No.)

Size Code No.	Chassis Dimensions			Part Dimensions			Grounding Screw Holes			
	A Mounting Hole Width in. / mm	B Mounting Hole Hgt. in. / mm	Max. Chassis Thkness in. / mm	C in. / mm	D in. / mm	E in. / mm	F in. / mm	G In. / mm	H In. / mm	I in. / mm
-1	1.880 47,7	1.120 28,5	.040 1,0	4.430 112,5	1.500 38,0	2.170 55,0	1.900 48,3	.335 8,5	.020 0,5	.197 5,0
-2				5.650 143,5						