

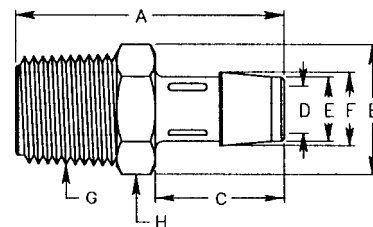
KYNAR®, (PVDF) HOSE FITTINGS

KYNAR BARBED FITTINGS

Part No. O360 - (Size Code No.) - (37)

Flexible tubing designed for use without a clamp. If clamp is preferred, heat shrink tubing is recommended.

Flexible tubing designed with anti-rotation devices on the necks of all barbs. Clamps are required. (See page 182 for clamps.)



Size Code Nos. -1 through -27.

Size Code Nos. -28 through -46.

Size Code No.	Overall Length A	Overall Height B	Barb Length C	Thrh Hole D	Hose I.D. E	Barb I.D. F	Thread Size G	Hex Size H
-1	.444	.289	.194	.047	1/16	.094	10-32 UNF	.250
-2	.538	.289	.291	.070	3/32	.141	10-32 UNF	.250
-3	.638	.289	.388	.094	1/8	.188	10-32 UNF	.250
-4	.728	.289	.484	.094	5/32	.234	10-32 UNF	.250
-5	.492	.289	.194	.047	1/16	.094	10-32 Tapped	.250
-6	.584	.289	.291	.070	3/32	.141	10-32 Tapped	.250
-7	.680	.289	.388	.094	1/8	.188	10-32 Tapped	.250
-8	.776	.289	.484	.094	5/32	.234	10-32 Tapped	.250
-9	.535	.361	.194	.047	1/16	.094	1/4-28 UNF	.312
-10	.639	.361	.291	.070	3/32	.141	1/4-28 UNF	.312
-11	.733	.361	.388	.094	1/8	.188	1/4-28 UNF	.312
-12	.830	.361	.484	.117	5/32	.234	1/4-28 UNF	.312
-13	.923	.361	.582	.125	3/16	.282	1/4-28 UNF	.312
-14	.647	.361	.194	.047	1/16	.094	M6	.312
-15	.743	.361	.291	.070	3/32	.141	M6	.312
-16	.838	.361	.388	.094	1/8	.188	M6	.312
-17	.935	.361	.484	.117	5/32	.234	M6	.312
-18	1.029	.361	.582	.125	3/16	.282	M6	.312
-19	.690	.361	.194	.047	1/16	.094	1/16-27 NPT	.312
-20	.787	.361	.291	.070	3/32	.141	1/16-27 NPT	.312
-21	.885	.361	.388	.094	1/8	.188	1/16-27 NPT	.312
-22	.981	.361	.484	.117	5/32	.234	1/16-27 NPT	.312
-23	1.075	.361	.582	.125	3/16	.282	1/16-27 NPT	.312
-24	.713	.505	.194	.047	1/16	.094	1/8-27 NPT	.440
-25	.813	.505	.291	.070	3/32	.141	1/8-27 NPT	.440
-26	.904	.505	.388	.094	1/8	.188	1/8-27 NPT	.440
-27	1.001	.505	.484	.117	5/32	.234	1/8-27 NPT	.440
-28	1.473	.505	.800	.140	1/4	.300	1/8 NPT	7/16
-29	1.573	.505	.900	.250	3/8	.428	1/8 NPT	7/16
-30	1.669	.649	.800	.140	1/4	.300	1/4 NPT	9/16
-31	1.775	.649	.900	.250	3/8	.428	1/4 NPT	9/16
-32	1.871	.649	1.000	.360	1/2	.570	1/4 NPT	9/16
-33	1.675	.794	.800	.140	1/4	.300	3/8 NPT	11/16
-34	1.778	.794	.900	.250	3/8	.428	3/8 NPT	11/16
-35	1.879	.794	1.000	.360	1/2	.570	3/8 NPT	11/16
-36	1.860	1.010	.800	.140	1/4	.300	1/2 NPT	7/8
-37	1.952	1.010	.900	.250	3/8	.428	1/2 NPT	7/8
-38	2.047	1.010	1.000	.360	1/2	.570	1/2 NPT	7/8
-40	2.242	1.010	1.200	.580	3/4	.855	1/2 NPT	7/8
-41	1.871	1.299	.800	.140	1/4	.300	3/4 NPT	1 1/8
-42	1.961	1.299	.900	.250	3/8	.428	3/4 NPT	1 1/8
-43	2.055	1.299	1.000	.360	1/2	.570	3/4 NPT	1 1/8
-44	2.259	1.299	1.200	.580	3/4	.855	3/4 NPT	1 1/8
-45	2.462	1.299	1.400	.800	1	1.100	3/4 NPT	1 1/8
-46	2.630	1.588	1.400	.800	1	1.100	1 NPT	1 3/8

KYNAR 90° BARBED FITTINGS

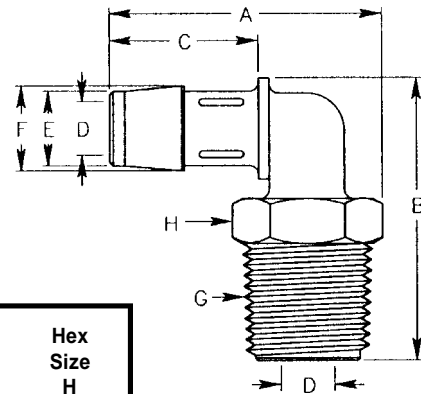
Part No. O361 - (Size Code No.) - (37)

Flexible tubing designed for use without a clamp. If clamp is preferred, heat shrink tubing is recommended.

Flexible tubing designed with anti-rotation devices on the necks of all barbs. Clamps are required. (See page 182 for clamps.)

Size Code Nos. -1 through -9.

Size Code Nos. -10 through -27.



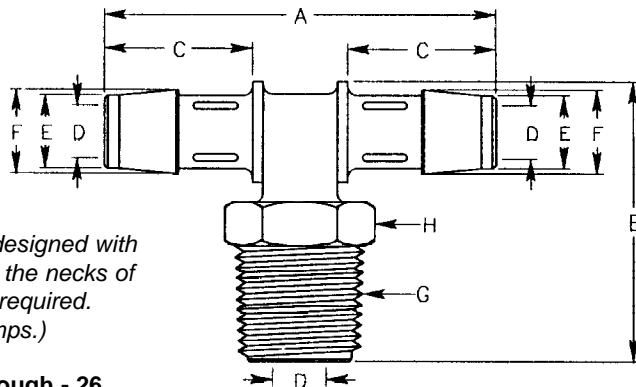
Size Code No.	Overall Length A	Overall Height B	Barb Length C	ThrgH Hole D	Hose I.D. E	Barb I.D. F	Thread Size G	Hex Size H
-1	.374	.388	.194	.047	1/16	.094	10-32 UNF	.250
-2	.498	.460	.291	.070	3/32	.141	10-32 UNF	.250
-3	.623	.517	.388	.094	1/8	.188	10-32 UNF	.250
-4	.374	.434	.194	.047	1/16	.094	10-32 Tapered	.250
-5	.498	.497	.291	.070	3/32	.141	10-32 Tapered	.250
-6	.623	.566	.388	.094	1/8	.188	10-32 Tapered	.250
-7	.750	.796	.388	.094	1/8	.188	1/8-27 NPT	.440
-8	.966	.920	.582	.141	3/16	.282	1/8-27 NPT	.440
-9	1.213	1.059	.775	.188	1/4	.375	1/8-27 NPT	.440
-10	1.205	1.148	.800	.140	1/4	.300	1/8 NPT	7/16
-11	1.375	1.325	.900	.250	3/8	.428	1/8 NPT	7/16
-12	1.278	1.382	.800	.140	1/4	.300	1/4 NPT	9/16
-13	1.445	1.563	.900	.250	3/8	.428	1/4 NPT	9/16
-14	1.612	1.686	1.000	.360	1/2	.570	1/4 NPT	9/16
-15	1.349	1.389	.800	.140	1/4	.300	3/8 NPT	11/16
-16	1.516	1.559	.900	.250	3/8	.428	3/8 NPT	11/16
-17	1.683	1.676	1.000	.360	1/2	.570	3/8 NPT	11/16
-18	1.455	1.511	.800	.140	1/4	.300	1/2 NPT	7/8
-19	1.623	1.723	.900	.250	3/8	.428	1/2 NPT	7/8
-20	1.789	1.807	1.000	.360	1/2	.570	1/2 NPT	7/8
-21	2.122	2.169	1.200	.580	3/4	.855	1/2 NPT	7/8
-22	1.597	1.574	.800	.140	1/4	.300	3/4 NPT	1 1/8
-23	1.763	1.744	.900	.250	3/8	.428	3/4 NPT	1 1/8
-24	1.931	1.868	1.000	.360	1/2	.570	3/4 NPT	1 1/8
-25	2.264	2.162	1.200	.580	3/4	.855	3/4 NPT	1 1/8
-26	2.597	2.435	1.400	.800	1	1.100	3/4 NPT	1 1/8
-27	2.738	2.605	1.400	.800	1	1.100	1 NPT	1 3/8

KYNAR BRANCH TEE

Part No. O362 - (Size Code No.) - (37)

Flexible tubing clamps designed for use without a clamp. Heat Shrink tubing is recommended.

Flexible tubing clamp designed with antirotation devices on the necks of all barbs. Clamps are required. (See page 182 for clamps.)



Size Code Nos. -1 through -8.

Size Code Nos. -9 through -26.

Size Code No.	Overall Length A	Overall Height B	Barb Length C	Thrh Hole D	Hose I.D. E	Barb I.D. F	Thread Size G	Hex Size H
-1	.497	.388	.194	.047	1/16	.094	10-32 UNF	.250
-2	.746	.456	.291	.070	3/32	.141	10-32 UNF	.250
-3	.995	.512	.388	.094	1/8	.188	10-32 UNF	.250
-4	.497	.435	.194	.047	1/16	.094	10-32 Tapered	.250
-5	.746	.501	.291	.070	3/32	.141	10-32 Tapered	.250
-6	.995	.567	.388	.094	1/8	.188	10-32 Tapered	.250
-7	1.492	.920	.582	.141	3/16	.282	1/8-27 NPT	.440
-8	1.988	1.058	.775	.188	1/4	.375	1/8-27 NPT	.433
-9	1.944	1.190	.800	.140	1/4	.300	1/8 NPT	7/16
-10	2.271	1.362	.900	.250	3/8	.428	1/8 NPT	7/16
-11	1.944	1.386	.800	.140	1/4	.300	1/4 NPT	9/16
-12	2.281	1.564	.900	.250	3/8	.428	1/4 NPT	9/16
-13	2.616	1.687	1.000	.360	1/2	.570	1/4 NPT	9/16
-14	1.948	1.388	.800	.140	1/4	.300	3/8 NPT	11/16
-15	2.277	1.561	.900	.250	3/8	.428	3/8 NPT	11/16
-16	2.597	1.687	1.000	.360	1/2	.570	3/8 NPT	11/16
-17	1.940	1.533	.800	.140	1/4	.300	1/2 NPT	7/8
-18	2.279	1.737	.900	.250	3/8	.428	1/2 NPT	7/8
-19	2.618	1.859	1.000	.360	1/2	.570	1/2 NPT	7/8
-20	3.289	2.177	1.200	.580	3/4	.855	1/2 NPT	7/8
-21	1.941	1.561	.800	.140	1/4	.300	3/4 NPT	1 1/8
-22	2.281	1.740	.900	.250	3/8	.428	3/4 NPT	1 1/8
-23	2.612	1.869	1.000	.360	1/2	.570	3/4 NPT	1 1/8
-24	3.281	2.170	1.200	.580	3/4	.855	3/4 NPT	1 1/8
-25	3.940	2.444	1.400	.800	1	1.100	3/4 NPT	1 1/8
-26	3.941	2.613	1.400	.800	1	1.100	1 NPT	1 3/8

KYNAR BARBED ELBOW

Part No. O363 - (Size Code No.) - (37)

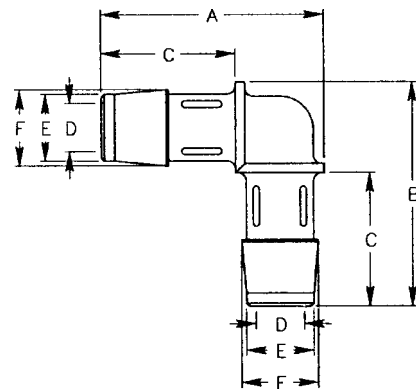
Flexible tubing designed for use without a clamp. If clamp is preferred, heat shrink tubing is recommended.

Flexible tubing designed with anti-rotation devices on the necks of all barbs. Clamps are required. (See page 182 for clamps.)

Size Code Nos. -1 through -3.

Size Code Nos. -4 through -8.

Size Code No.	Overall Length A	Overall Height B	Barb Length C	Thrh Hole D	Hose I.D. E	Barb I.D. F
-1	.301	.301	.194	.047	1/16	.094
-2	.454	.454	.291	.070	3/32	.141
-3	.605	.605	.388	.094	1/8	.188
-4	1.170	1.189	.800	.140	1/4	.300
-5	1.405	1.431	.900	.250	3/8	.428
-6	1.634	1.651	1.000	.360	1/2	.570
-7	2.118	2.136	1.200	.580	3/4	.855
-8	2.563	2.560	1.400	.800	1	1.100



KYNAR BARBED TEE

Part No. O364 - (Size Code No.) - (37)

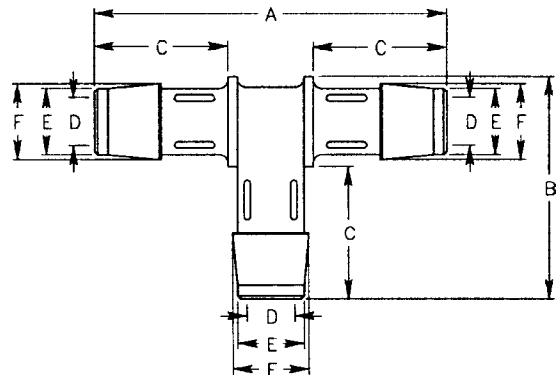
Flexible tubing designed for use without a clamp. If clamp is preferred, heat shrink tubing is recommended.

Flexible tubing designed with anti-rotation devices on the necks of all barbs. Clamps are required. (See page 182 for clamps.)

Size Code Nos. -1 through -3.

Size Code Nos. -4 through -8.

Size Code No.	Overall Length A	Overall Height B	Barb Length C	Thrh Hole D	Hose I.D. E	Barb I.D. F
-1	.497	.304	.194	.047	1/16	.094
-2	.745	.456	.291	.070	3/32	.141
-3	.990	.602	.388	.094	1/8	.188
-4	1.939	1.189	.800	.140	1/4	.300
-5	2.262	1.438	.900	.250	3/8	.428
-6	2.594	1.653	1.000	.360	1/2	.570
-60	2.981	1.925	--	.470	5/8	.712
-7	3.293	2.143	1.200	.580	3/4	.855
-8	3.925	2.573	1.400	.800	1	1.100

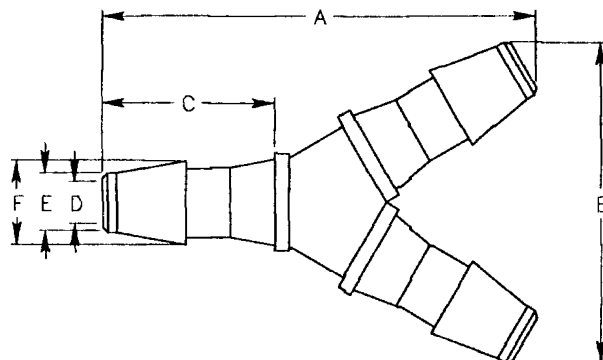


KYNAR BARBED "Y" FITTINGS

Part No. O365 - (Size Code No.) - (37)

Flexible tubing designed for use without a clamp. If clamp is preferred, heat shrink tubing is recommended.

Size Code No.	Overall Length A	Overall Height B	Barb Length C	Thrh Hole D	Hose I.D. E	Barb I.D. F
-1	.482	.347	.194	.047	1/16	.094
-2	.715	.522	.291	.070	3/32	.141
-3	.955	.687	.388	.094	1/8	.188



KYNAR BARBED CONNECTOR

Part No. O366 - (Size Code No.) - (37)

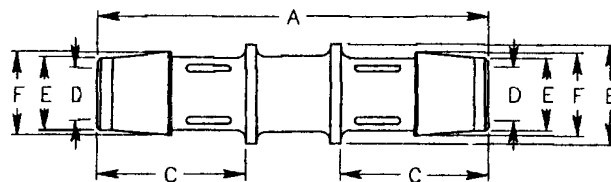
Flexible tubing designed for use without a clamp. If clamp is preferred, heat shrink tubing is recommended.

Flexible tubing designed with anti-rotation devices on the necks of all barbs. Clamps are required. (See page 182 for clamps.)

Size Code Nos. -1 through -6.

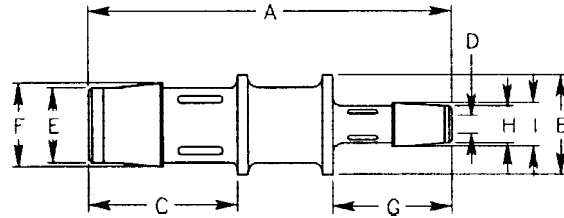
Size Code Nos. -7 through -13.

Size Code No.	Overall Length A	Overall Height B	Barb Length C	Thrh Hole D	Hose I.D. E	Barb I.D. F
-1	.493	.109	.194	.047	1/16	.094
-2	.743	.164	.291	.070	3/32	.141
-3	.988	.219	.388	.094	1/8	.188
-4	1.225	.305	.562	.100	5/32	.234
-5	1.455	.370	.675	.125	3/16	.280
-6	1.905	.500	.900	.187	1/4	.355
-7	1.938	.400	.800	.140	1/4	.300
-8	2.088	.478	.850	.195	5/16	.364
-9	2.258	.555	.900	.250	3/8	.428
-10	2.592	.680	1.000	.360	1/2	.570
-11	2.921	.825	1.100	.470	5/8	.712
-12	3.273	.960	1.200	.580	3/4	.855
-13	3.927	1.225	1.400	.800	1	1.100



KYNAR BARBED REDUCING CONNECTOR

Part No. O367 - (Size Code No.) - (37)



Flexible tubing designed for use without a clamp. If clamp is preferred, heat shrink tubing is recommended.

Flexible tubing designed with anti-rotation devices on the necks of all barbs. Clamps are required. (See page 182 for clamps.)

Size Code Nos. -1 through -13.

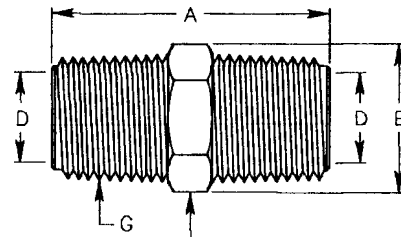
Size Code Nos. -14 through -31.

Size Code No.	Overall Length A	Overall Height B	Barb Length C	Thrg H Hole D	Hose 1 I.D. E	Barb 1 O.D. F	Barb 2 Length G	Hose 2 I.D. H	Barb 2 O.D. I
-1	.646	.164	.291	.047	3/32	.141	.194	1/16	.094
-2	.799	.219	.388	.047	1/8	.188	.194	1/16	.094
-3	.892	.219	.388	.070	1/8	.188	.291	3/32	.141
-4	.942	.305	.562	.046	1/16	.234	.266	5/32	.105
-5	1.021	.305	.562	.060	3/32	.234	.350	5/32	.145
-6	1.121	.305	.562	.078	1/8	.234	.450	5/32	.187
-7	1.044	.370	.675	.046	1/16	.280	.266	3/16	.105
-8	1.129	.370	.675	.060	3/32	.280	.350	3/16	.145
-9	1.229	.370	.675	.078	1/8	.280	.450	3/16	.187
-10	1.344	.370	.675	.100	5/32	.280	.562	3/16	.234
-11	1.455	.500	.900	.078	1/8	.355	.450	1/4	.187
-12	1.567	.500	.900	.100	5/32	.355	.562	1/4	.234
-13	1.666	.500	.900	.125	3/16	.355	.675	1/4	.280
-14	2.039	.478	.850	.144	5/16	.364	.800	1/4	.300
-15	2.157	.555	.900	.144	3/8	.428	.800	1/4	.300
-16	2.205	.555	.900	.200	3/8	.428	.850	5/16	.364
-17	2.391	.680	1.000	.144	1/2	.570	.800	1/4	.300
-18	2.440	.680	1.000	.200	1/2	.570	.850	5/16	.364
-20	2.489	.680	1.000	.256	1/2	.570	.900	3/8	.428
-21	2.627	.825	1.100	.143	5/8	.712	.800	1/4	.300
-22	2.676	.825	1.100	.200	5/8	.712	.850	5/16	.364
-23	2.725	.825	1.100	.256	5/8	.712	.900	3/8	.428
-24	2.823	.825	1.100	.368	5/8	.712	1.000	1/2	.570
-25	2.960	.960	1.200	.256	3/4	.855	.900	3/8	.428
-26	3.058	.960	1.200	.368	3/4	.855	1.000	1/2	.570
-27	3.156	.960	1.200	.481	3/4	.855	1.100	5/8	.712
-28	3.528	1.225	1.400	.368	1	1.100	1.000	1/2	.570
-30	3.626	1.225	1.400	.480	1	1.100	1.100	5/8	.712
-31	3.724	1.225	1.400	.593	1	1.100	1.200	3/4	.855

KYNAR THREADED CONNECTOR

Part No. O368 - (Size Code No.) - (37)

Size Code No.	Overall Length A	Overall Height B	Through Hole D	Thread Size G	Hex Size H
-1	.397	.289	.094	10-32 UNF	.250
-2	.489	.289	.094	10-32 Tapped	.250
-3	1.077	.505	.256	1/8	7/16
-4	1.476	.649	.347	1/4	9/16
-5	1.490	.794	.482	3/8	11/16
-6	1.839	1.010	.609	1/2	7/8
-7	1.864	1.299	.818	3/4	1 1/8
-8	2.229	1.588	1.044	1	1 3/8



KYNAR THREADED PLUG

Part No. O369 - (Size Code No.) - (37)

Size Code No.	Overall Length A	Overall Height B	Thread Size G	Hex Size H
-1	.253	.289	10-32 UNF	.250
-2	.299	.289	10-32 Tapped	.250
-3	.350	.361	1/4-28 UNF	.312
-4	.461	.361	M6	.312
-5	.508	.361	1/16-27 NPT	.312
-6	.600	.505	1/8-27 NPT	.440

