

# NYLON GROMMET NUTS

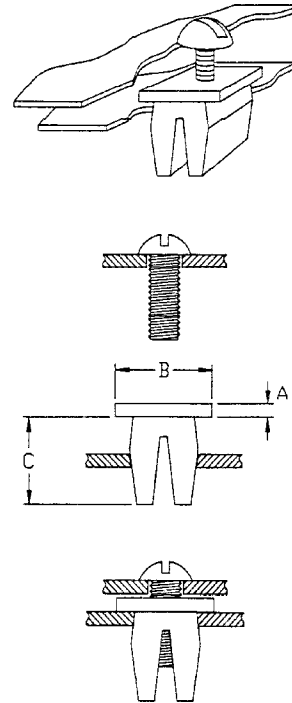
## SQUARE HEAD GROMMET NUT

Available in the following materials:

Material Code No.	Material Name
-18	Nylon 6/6, (natural)
-78	Nylon 6/6, (black)

Part No. PN109 - (Size Code No.) - (Material Code No.)

Size Code No.	Hole Size	Panel Thickness Range	Screw Size	Head Size B	Head Hgt. A	Lock Lgth. C
-1	.275/.290	.031/.125	8-10	.375	.031	.320
-2	.275/.290	.031/.125	8-10	.375	.062	.320
-3	.275/.290	.031/.125	8-10	.375	.125	.320
-4	.275/.290	.031/.125	8-10	.375	.250	.320
-5	.250/.250	.031/.115	6	.437	.094	.220
-6	.270/.270	.062/.275	6	.375	.031	.470
-7	.225/.255	.031/.125	8	.375	.087	.300
-8	.250/.255	.110/.125	6	.375	.031	.265
-80	.173/.178	.031/.078	4	.218	.250	.218
-9	.250/.270	.062/.155	6	.375	.032	.312
-90	.285	.078/.175	8	.380	.045	.340
-10	.275/.280	.040/.045	8-10	.370	.032	.330
-11	.350/.355	.218/.230	8-10	.475	.062	.421
-12	.370/.390	.064/.187	10	.609	.085	.290
-120	.305/.315	.031/.175	8	.470	.060	.300
-13	.370/.375	.031/.100	12	.625	.080	.275
-14	.173/.178	.031/.078	4	.218	.050	.218
-16	.270/.310	.031/.170	8	.405	.062	.312
-17	.310/.310	.031/.170	10	.465	.062	.295
-18	.320/.320	.031/.155	10	.650	.072	.305
-19	.245/.270	.047/.095	2	.375	.032	.240
-20	.335/.340	.062/.125	8	.512	.075	.315
-21	.270/.270	.062/.125	6	.390	.050	.275
-22	.275/.285	.031/.125	4	.375	.050	.218
-23	.200/.270	.032/.156	6	.312/.437	.035	.312
-24	.275/.280	.062/.120	6	.390	.055	.281
-240	.260/.270	.093/.187	6	.410	.040	.310
-245	.265	.047/.180	8	.375	.032	.327
-25	.370/.375	.062/.120	1/4	.625	.080	.281
-250	.410/.410	.031/.062	1/4	.630	.140	.280
-255	.320/.335	.032/.234	10	.470	.055	.420
-26	.335/.345	.062/.171	10	.468	.095	.400
-260	.330/.365	.032/.095	8	.500	.094	.295



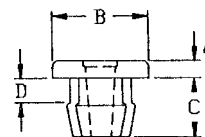
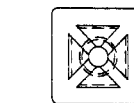
## DOUBLE SPLIT SQUARE HEAD GROMMET NUT

Available in the following materials:

Material Code No.	Material Name
-18	Nylon 6/6, (natural)
-78	Nylon 6/6, (black)

Part No. PN110 - (Size Code No.) - (Material Code No.)

Size Code No.	Hole Size	Panel Thickness Range	Screw Size	Head Size B	Head Hgt. A	Lock Lgth. C
-1	.377/.382	.125/.130	10	.609	.082	.308
-2	.228/.233	.250/.271	8	.375	.031	.406
-3	.310/.315	.110/.115	8	.437	.078	.281
-4	.305/.310	.125/.135	8	.437	.062	.281
-5	.250/.250	.093/.275	8	.375	.047	.420
-6	.330/.330	.031/.125	8	.505	.032	.275
-7	.303	.031/.145	8-10	.435	.062	.270



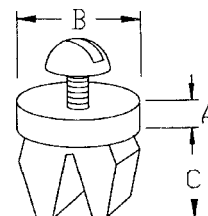
### ROUND HEAD GROMMET NUT

Available in the following materials:

Material Code No.	Material Name
-18	Nylon 6/6, (natural)
-78	Nylon 6/6, (black)

Part No. PN111 - (Size Code No.) - (Material Code No.)

Size Code No.	Hole Size	Panel Thkness Range	Screw Size	Head Size B	Head Hgt. A	Lock Lgth. C
-1	.275/.290	.031/.125	8-10	.500	.031	.320
-2	.271/.290	.031/.125	8-10	.500	.062	.320
-3	.271/.290	.031/.125	8-10	.500	.125	.320
-4	.275/.290	.031/.125	8-10	.500	.250	.320
-5	.275/.290	.031/.156	8	.500	.375	.320
-6	.275/.290	.031/.156	8-10	.500	.708	.315
-7	.275/.290	.031/.156	8-10	.437	.032	.325
-8	.275/.290	.031/.109	8-10	.547	1.062	.281
-10	.425/.429	.031/.110	5/16	.740	.190	.312
-11	.310/.310	.031/.160	10	.500	.035	.292
-12	.325/.330	.031/.156	10	.565	.062	.320
-13	.350/.355	.032/.125	12	.531	.125	.281
-14	.415/.430	.032/.135	1/4	.750	.062	.310
-15	.275	.062/.170	8	.495	.312	.325
-16	.270/.280	.062/.165	6	.375	.093	.297
-17	.280/.285	.032/.150	6	1/2	23/32	11/32



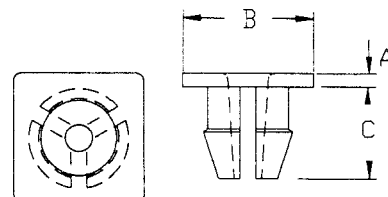
### THREE LEGGED SQUARE HEAD GROMMET NUT

Available in the following materials:

Material Code No.	Material Name
-18	Nylon 6/6, (natural)
-78	Nylon 6/6, (black)

Part No. P148 - (Size Code No.) - (Material Code No.)

Size Code No.	Hole Size	Panel Thkness Range	Screw Size	Head Size B	Head Hgt. A	Lock Lgth. C
-1	.300/.300	.031/.135	6	.485	.055	.265



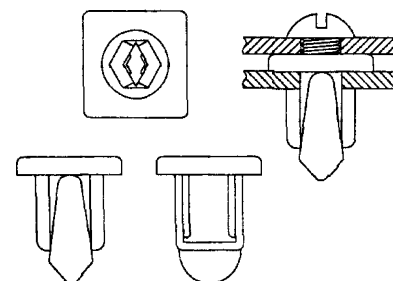
### CLOSED GROMMET NUT

Available in the following materials:

Material Code No.	Material Name
-18	Nylon 6/6, (natural)
-78	Nylon 6/6, (black)

Part No. P149 - (Size Code No.) - (Material Code No.)

Size Code No.	Hole Size	Panel Thkness Range	Screw Size	Head Size B	Head Hgt. A	Lock Lgth. C
-1*	.265/.280	.075/.145	6-8	.405	.090	.450
-2**	.355/.355	.062/.350	10	.700	.050	.675



\* Square Head  
 \*\* Round Head