

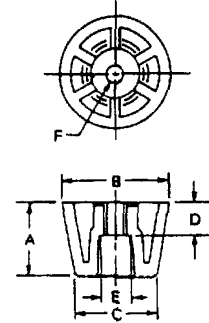
CABINET FEET

- Molded from Thermoplastic Rubber they provide high traction and excellent shock absorbing qualities.
- Over 25 standard shapes and sizes and available in Black or Gray, Custom sizes and colors available.
- They will not mark or scratch surfaces and provide excellent resistance to ozone, aging and most chemicals.
- A plated steel insert allows mounting using machine screws or rivet without distortion to the foot.

ROUND FEET

Part No. E205 - (Size Code No.)

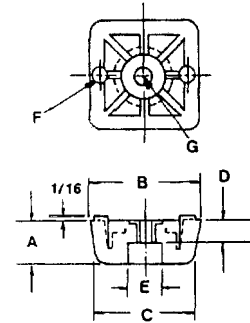
Size Code No.	A	B	C	D	E	Machine Screw Size F
-1	.375	.562	.437	.187	.219	# 4 Round Head
-2	.437	.750	.594	.187	.266	# 6 Round Head
-3	.625	.937	.719	.297	.359	# 8 Round Head
-4	.875	1.125	.923	.484	.468	#10 Truss Head
-5	1.125	1.250	1.000	.484	.468	#10 Truss Head
-6	.312	.625	.500	.187	.281	# 4 Truss Head
-7	.375	.750	.625	.187	.344	# 6 Truss Head
-8	.437	.875	.719	.187	.344	# 6 Truss Head
-9	.531	1.062	.875	.297	.406	# 8 Truss Head
-10	.625	1.250	1.032	.312	.469	#10 Truss Head
-11	.250	.687	.594	.125	.344	# 6 Truss Head
-12	.312	.875	.750	.125	.406	# 8 Truss Head
-13	.437	1.062	.937	.203	.469	#10 Truss Head
-14	.500	1.312	1.125	.312	.469	#10 Truss Head
-15	.562	1.625	1.437	.312	.469	#10 Truss Head
-16	.687	1.000	.750	-	-	



SQUARE FEET

Part No. E206 - (Size Code No.)

Size Code No.	A	B	C	D	E	Lub Dia. F	Machine Screw Size G
-1	.344	.875	.797	.187	.344	.149	# 6 Truss Head
-2	.390	1.000	.906	.187	.344	.149	# 6 Truss Head
-3	.469	1.187	1.078	.297	.422	.177	# 8 Truss Head
-4	.531	1.375	1.219	.312	.484	.201	#10 Truss Head
-5	.594	1.500	1.344	.312	.484	.201	#10 Truss Head



Size Code No.	A ±.020	B ±.10	C ±.005
-6	.656 (21/32)	.328	.169 (#18 DRILL)
-7	.781 (25/32)	.3905	.169 (#18 DRILL)
-8	.906 (29/32)	.453	.196 (# 9 DRILL)
-9	1.062 (1-1/16)	.531	.221 (# 2 DRILL)
-10	1.187 (1-3/16)	.5935	.221 (# 2 DRILL)

RECTANGULAR FEET

Part No. E207 - (Size Code No.)

Size Code No.	A	B	C	D	E	F	G	Machine Screw Size H
-1	.344	.875	1.750	1.656	.187	.344	.875	# 6 Truss Head
-2	.390	1.000	2.000	1.906	.187	.344	1.000	# 6 Truss Head
-3	.469	1.187	2.375	2.250	.297	.421	1.187	# 8 Truss Head
-4	.531	1.375	2.750	2.594	.316	.484	1.375	#10 Truss Head
-5	.594	1.500	3.000	2.844	.316	.484	1.500	#10 Truss Head

