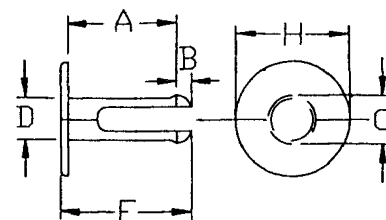


GENERAL PRODUCTS

NYLON PUSH-IN FASTENERS

Available in the following materials:

Material Code No.	Material Name
-18	Nylon 6/6, (natural)
-78	Nylon 6/6, (black)



Part No. PN102 - (Size Code No.) - (Material Code No.)

Size Code No.	H	A	B	C	D	E	Size Code No.	H	A	B	C	D	E
-1000	3/8	1.062	.177	.202	.165	1.303	-25	11/32	.375	.137	.236	.203	.540
-1001	11/32	.875	.174	.224	.175	1.115	-26	25/64	1.730	.210	.295	.230	2.010
-1002	13/64	.210	.091	.179	.130	.342	-27	29/64	.276	.187	.295	.240	.505
-1003	25/64	.503	.210	.295	.230	1.083	-28	29/64	.300	.187	.295	.240	.535
-1004	13/64	.235	.066	.145	.115	.341	-29	19/32	.480	.187	.300	.245	.720
-1005	3/8	.505	.160	.200	.160	.735	-30	29/64	.330	.187	.295	.240	.580
-1006	3/4	.636	.180	.220	.180	.875	-31	1/2	.171	.187	.300	.260	.418
-1007	5/16	.125	.070	.110	.089	.235	-310	11/16	.140	.255	.360	.290	.468
-1	3/16	.066	.075	.100	.090	.179	-32	19/32	.171	.187	.295	.260	.418
-2	3/8	.636	.180	.220	.180	.875	-33	19/32	.250	.187	.300	.245	.497
-3	9/32	.063	.078	.100	.093	.165	-34	19/32	.375	.187	.290	.245	.622
-4	1/4	.115	.085	.145	.093	.240	-35	11/32	.171	.187	.300	.260	.380
-5	9/32	.093	.078	.105	.093	.200	-36	19/32	.405	.160	.315	.275	.620
-6	5/16	.121	.085	.145	.089	.246	-37	1/4	.550	.135	.145	.112	.745
-7	13/64	.190	.090	.180	.130	.320	-38	15/32	.129	.148	.238	.197	.399
-8	13/64	.156	.135	.140	.115	.320	-39	15/64	.320	.084	.145	.118	.437
-9	13/64	.135	.135	.140	.115	.295	-40	1/2	.064	.168	.280	.243	.292
-10	13/64	.235	.070	.137	.115	.335	-41	1/2	.099	.168	.280	.245	.324
-11	13/64	.250	.135	.145	.115	.395	-42	1/2	.127	.177	.281	.241	.361
-12	13/64	.121	.125	.145	.115	.285	-43	1/2	.156	.178	.281	.242	.380
-13	25/64	.315	.113	.208	.157	.488	-44	1/2	.189	.177	.278	.241	.426
-14	11/32	.450	.160	.200	.160	.680	-45	1/2	.219	.178	.277	.239	.445
-15	11/32	.133	.137	.202	.165	.305	-46	1/2	.250	.175	.283	.241	.487
-16	11/32	.065	.137	.202	.165	.325	-47	1/2	.281	.176	.280	.240	.513
-17	11/32	.556	.153	.225	.180	.780	-48	1/2	.314	.176	.281	.241	.547
-18	11/32	.250	.174	.224	.175	.490	-49	1/2	.345	.177	.281	.240	.578
-19	11/32	.197	.185	.295	.255	.415	-50	1/2	.375	.175	.281	.242	.609
-20	11/32	.555	.145	.225	.180	.770	-51	1/2	.405	.175	.282	.243	.638
-21	9/64	.315	.075	.135	.095	.450	-52	19/32	.130	.125	.205	.145	.305
-22	7/16	.120	.255	.380	.305	.445	-53	1/2	.466	.178	.280	.240	.701
-23	15/32	.121	.153	.238	.200	.324	-54	1/2	.498	.176	.280	.240	.734
-230	3/16	.145	.065	.105	.090	.255	-55	1/2	.438	.176	.281	.240	.672
-24	15/32	.156	.153	.228	.200	.359	-56	1/2	1.020	.380	.475	.350	1.460

Note: Size Code Nos. -3, -5 and -6 have no slot.

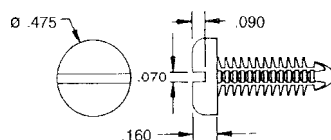
NYLON SPIN CLIPS

Available in the following materials:

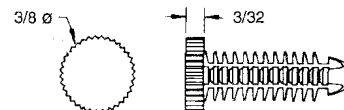
Material Code No.	Material Name
-18	Nylon 6/6, (natural)
-78	Nylon 6/6, (black)

(Part No.) - (Size Code No.) - (Material Code No.)

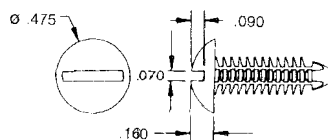
Size Code No.	Description (inches)	Size Code No.	Description (inches)
-1	1/4-20 x 3/8	-4	1/4-20 x 3/4
-2	1/4-20 x 1/2	-5	1/4-20 x 1
-3	1/4-20 x 5/8		



Slotted Pan Head
Part No. PN200



Unslotted Knurled Head
Part No. PN201



Slotted Round Head
Part No. PN202