

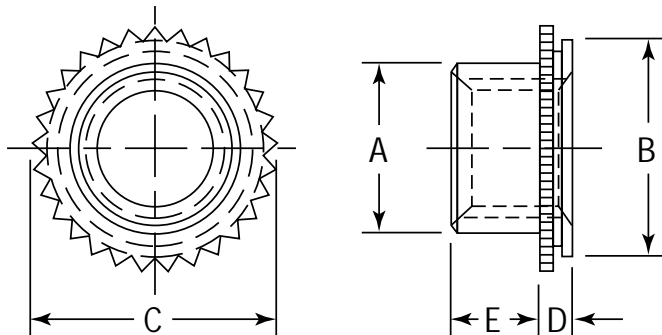


# Self-Clinching Fasteners

## Series CFE & CFEO Self-Locking Threads CFEX & CFEOX Non-Locking Threads



CFE self-clinching fasteners are designed to provide strong threads in a minimum of space. They are available with locking and non-locking threads and are directly interchangeable with industry standards.



Series	Finish	Thread
CFE, CFEO	Black dry-film lubricant per MIL-46010 Type I over Cadmium	Self-Locking Class 3B MIL-S-7742 6H ISO Metric
CFEX, CFEOX	Passivated ASTM A380	Non-Locking Class 2B, MIL-S-7742; 6H ISO Metric

Material: 303 Stainless Steel.

Use in: Materials with Rockwell Hardness of B-70 or less.

### Dimensions & Specifications

Thread Size	Part Number		D Max.	Min.	+ .003 in. (0.08 mm) - .000	A Max.	E + .015 in. (0.4 mm) - .000	B Max.	C ± .005 in. (0.13 mm)	Min.	
	Self-Locking	Non-Locking									
INCH (in.)	#4-40	CFE440	CFEX440	.060	.060	.172	.145	.065	.171	.192	.14
		CFEO440	CFEOX440	.040	.040						
	#6-32	CFE632	CFEX632	.060	.060	.213	.180	.075	.212	.244	.17
		CFEO632	CFEOX632	.040	.040						
	#8-32	CFE832	CFEX832	.060	.060	.290	.215	.090	.289	.322	.20
		CFEO832	CFEOX832	.040	.040						
#10-32	CFE1032	CFEX1032	.060	.060	.290	.245	.110	.289	.322	.20	
	CFEO1032	CFEOX1032	.040	.040							
1/4-20	CFE420	CFEX420 <sup>1</sup>	.060	.060	.344	.318	.120	.343	.384	.28	
1/4-28	CFE428	CFEX428 <sup>1</sup>	.060	.060							
METRIC (mm)	M3 x 0.5	CFEOM3	CFEOXM3	1.02	1.02	4.4	3.96	1.90	4.34	4.88	3.6
		CFEM3	CFEXM3	1.53	1.53						
	M4 x 0.7	CFEOM4	CFEOXM4	1.02	1.02	7.4	5.23	2.55	7.34	8.17	5.2
		CFEM4	CFEXM4	1.53	1.53						
	M5 x 0.8	CFEOM5	CFEOXM5	1.02	1.02	7.4	6.48	3.05	7.34	8.17	5.2
		CFEM5	CFEXM5	1.53	1.53						
	M6 x 1.0	CFEM6	CFEXM6	1.53	1.53	8.75	7.72	3.30	8.71	9.74	7.1

<sup>1</sup>Not Stocked, available on special order.

Continued on next page.



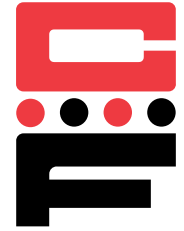
# Self-Clinching Fasteners

## Series CFE & CFEO

### Self-Locking Threads

### CFEX & CFEOX

### Non-Locking Threads



Continued from previous page.

#### Installation & Performance Data

Thread Size	Series	Sheet Thickness (in.)	Cold-rolled Steel			5052-H34 Aluminum			
			Installation Force (lbs.)	Pushout (lbs.)	Torque-out (in.-lbs.)	Installation Force (lbs.)	Pushout (lbs.)	Torque-out (in.-lbs.)	
INCH (in.)	#4-40	CFEO, CFEOX	.040	1500	135	14	800-900	85	10
		CFE, CFEX	.060	1500	200	16	800-900	130	10
	#6-32	CFEO, CFEOX	.040	2100	180	20	1100-1200	100	20
		CFE, CFEX	.060	2100	250	20	1300	170	20
	#8-32	CFEO, CFEOX	.040	2500	250	47	1500	150	40
		CFE, CFEX	.060	2500	350	60	1500	250	40
#10-32	CFEO, CFEOX	.040	2500	250	47	1500	150	40	
	CFE, CFEX	.060	2500	350	60	1600	250	40	
1/4-20 1/4-28	CFE, CFEX	.060	3500	400	125	2000	300	100	
Thread Size	Series	Sheet Thickness (mm.)	Cold-rolled Steel			5052-H34 Aluminum			
			Installation Force (kN)	Pushout (N)	Torque-out (N•m)	Installation Force (kN)	Pushout (N)	Torque-out (N•m)	
METRIC (mm)	M3	CFEO, CFEOX	1.0	6.7	600	2.0	4.0	380	2.0
		CFE, CFEX	1.5	6.7	900	2.4	4.0	590	2.4
	M4	CFEO, CFEOX	1.0	11.1	1100	6.0	7.0	675	5.3
		CFE, CFEX	1.5	11.1	1600	8.0	7.0	1100	8.0
	M5	CFEO, CFEOX	1.0	12	1200	6.0	7.0	675	5.3
		CFE, CFEX	1.5	12	1600	8.0	7.0	1100	8.0
M6	CFE, CFEX	1.5	15.6	1800	16.0	9.0	1400	14.6	