



# Self-Clinching Nuts for Stainless Steel

## Series CFSP



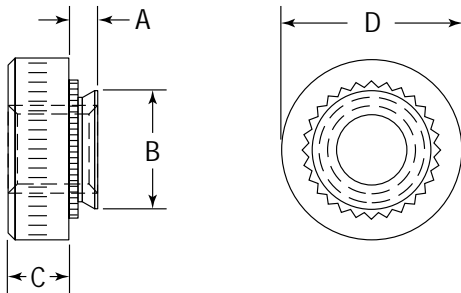
CFSP self-clinching nuts provide strong load-bearing threads in stainless sheet metal as thin as .030 inches (0.8mm).

Material: Precipitation Hardening Grade Stainless Steel.

Finish: Passivated ASTM A380.

Thread: Class 2B, MIL-S-7742; (6H ISO metric).

Use in: Materials with Rockwell Hardness of B-88 or less.



### Dimensions & Specifications

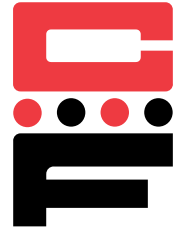
	Thread Size	Part Number	A Max.	Min.	+ .003 in. (0.08 mm) - .000	B Max.	C ± .01 in. (±.25mm)	D ± .01 in. (±.25mm)	Min.
INCH (in.)	#4-40	CFSP440-0	.030	.030-.039	.166	.165	.07	.25	.19
		CFSP440-1	.038	.040					
		CFSP440-2	.054	.056					
	#6-32	CFSP632-0	.030	.030-.039	.1875	.187	.07	.28	.22
		CFSP632-1	.038	.040					
		CFSP632-2	.054	.056					
	#8-32	CFSP832-0	.030	.030-.039	.213	.212	.09	.31	.27
		CFSP832-1	.038	.040					
		CFSP832-2	.054	.056					
	#10-32	CFSP1032-0	.030	.030-.039	.250	.249	.09	.34	.28
		CFSP1032-1	.038	.040					
		CFSP1032-2	.054	.056					
1/4-20	CFSP420-1	.054	.056	.344	.343	.17	.44	.34	
	CFSP420-2	.087	.091						
METRIC (mm)	M3 x 0.5	CFSPM3-0	0.76	0.8-1	4.25	4.22	1.5	6.3	4.8
		CFSPM3-1	0.97	1.0					
		CFSPM3-2	1.37	1.4					
	M4 x 0.7	CFSPM4-0	0.76	0.8-1	5.4	5.38	2	7.9	6.9
		CFSPM4-1	0.97	1.0					
		CFSPM4-2	1.37	1.4					
	M5 x 0.8	CFSPM5-0	0.76	0.8-1	6.4	6.38	2	8.7	7.1
		CFSPM5-1	0.97	1.0					
		CFSPM5-2	1.37	1.4					
M6 x 1.0	CFSPM6-1	1.37	1.4	8.75	8.72	4.1	11.1	8.6	

Continued on next page.



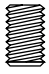
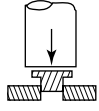
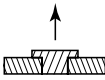
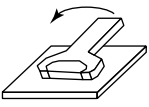
# Self-Clinching Nuts for Stainless Steel

## Series CFSP



Continued from previous page.

### Installation & Performance Data

						
	Thread Size	Shank Code	Installation Force (tons)	Pushout (lbs.)	Torque-out (in.-lbs.)	
INCH (in.)	#4-40	-0	1.5 – 2.5	100	13	
		-1		120	15	
		-2		225	18	
	#6-32	-0	2 – 3.5	105	16	
		-1		125	20	
		-2		270	28	
	#8-32	-0	2 – 3.5	105	26	
		-1		140	35	
		-2		280	45	
	#10-32	-0	3 – 4.5	115	32	
		-1		175	40	
		-2		315	60	
	1/4-20	-1	4.5 – 5.5	395	150	
	Thread Size	Shank	Installation Force (kN)	Pushout (N)	Torque-out (N•m)	
METRIC (mm)	M3	-0	13 – 22	465	1.46	
		-1		545	1.7	
		-2		1000	2.03	
	M4	-0	22 – 31	485	2.9	
		-1		640	4.0	
		-2		1245	5.1	
	M5	-0	26 – 40	525	3.6	
		-1		795	4.5	
		-2		1400	6.8	
		M6	-1	40 – 48	1755	17