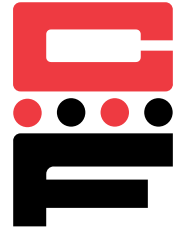


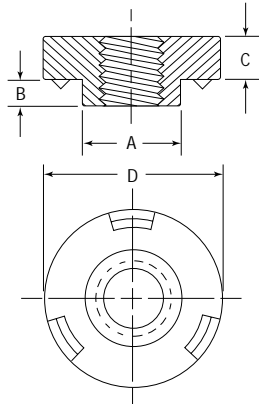


Weld Nuts

Series CFWN & CFWNS



CFWN weld nuts are the solution to providing load bearing threads in sheets that are too thin to tap. They provide three-point projections for fast, easy welding. Captive Fastener weld nuts fit standard hole sizes, and are otherwise dimensionally identical to industry standards.



Series	Material	Finish
CFWN	Carbon Steel	Light Oil Coat (Copper Flash Optional)
CFWNS	300 Series Stainless Steel	Passivated ASTM A380

Thread: Class 2B, MIL-S-7742; (6H ISO Metric).

Dimensions & Specifications

Thread Size	Part Number		Min.	Max.	A Max.	B Max.	C ± .004 in. (± 0.1 mm)	D +0.00 -.01 in. (-.25 mm)	Min.
	Carbon Steel	Stainless Steel							
#6-32	CFWN632	CFWNS632	.030	.193	.191	.030	.093	.340	.17
	CFWN632-1		.060	.193	.191	.050			
#8-32	CFWN832	CFWNS832	.030	.218	.216	.030	.107	.370	.18
	CFWN832-1		.060	.218	.216	.050			
#10-24	CFWN1024	CFWNS1024	.030	.250	.248	.030	.155	.440	.22
	CFWN1024-1		.060	.250	.248	.050			
#10-32	CFWN1032	CFWNS1032	.030	.250	.248	.030	.155	.440	.22
	CFWN1032-1		.060	.250	.248	.050			
1/4-20	CFWN420	CFWNS420	.050	.316	.315	.048	.185	.520	.26
M3 x 0.5	CFWNM3	CFWNSM3	0.75	4.4	4.37	0.77	1.5	7.95	4.5
M4 x 0.7	CFWNM4	CFWNSM4	0.77	5.6	5.57	0.77	2.6	9.4	5.2
M5 x 0.8	CFWNM5	CFWNSM5	0.77	6.4	6.33	0.77	3.8	11.1	5.7
M6 x 1.0	CFWNM6	CFWNSM6	1.25	8.1	8.03	1.24	4.6	13.2	6.7

Continued on next page.



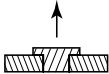
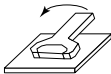
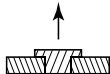
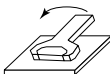
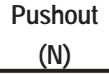
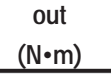
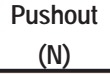
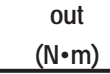
Weld Nuts

Series CFWN & CFWNS



Continued from previous page.

Installation & Performance Data

		Type CFWN in .060 Cold-rolled Steel		Series CFWNS in .060 Stainless	
					
Thread Size		Pushout (lbs.)	Torque-out (in.-lbs.)	Pushout (lbs.)	Torque-out (in.-lbs.)
INCH (in.)	#6-32	650	25	800	30
	#8-32	750	35	850	45
	#10-24	900	60	900	120
	#10-32	900	60	900	120
	1/4-20	1000	185	1000	200
		Type CFWN in .060 Cold-rolled Steel		Series CFWNS in .060 Stainless	
					
Thread Size		Pushout (N)	Torque-out (N•m)	Pushout (N)	Torque-out (N•m)
METRIC (mm)	M3	3020	1.4	2220	1.4
	M4	3780	5	3380	3.7
	M5	4000	12.5	3910	6.3
	M6	4445	22.6	4440	20.9