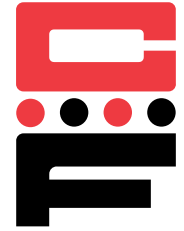




Spring-Top Standoffs

Series CFSSA, CFSSS & CFSSC



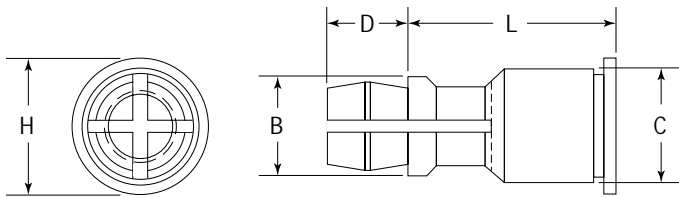
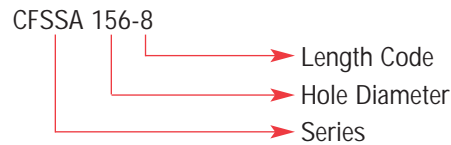
CFSSA, CFSSS & CFSSC spring-top standoffs are designed for permanent installation into sheet metal by pressing into a prepared hole. The spring-action post provides quick attachment and removal with a simple snap eliminating the problems associated with loose hardware.

Series	Material	Finish
CFSSA	7075-T6 Aluminum	Plain
CFSSS	Carbon Steel	Zinc* Clear
CFSSC	400 Series Stainless Steel	Passivated ASTM A380

*Spec. ASTM B633-85

Use in: CFSSA – Cold-rolled Steel HRB-50.
 CFSSS – Cold-rolled Steel HRB-60.
 CFSSC – Cold-rolled Steel HRB-70.

Part Number Structure:



Dimensions & Specifications

INCH (in.)	Series	Top Panel Mounting Hole Diameter Code	Length L ± .005 in. (Length Code in 32nds of an inch)										B ± .005	C Max.	D ± .005	H ± .005
			.250	.312	.375	.437	.500	.562	.625	.750	.875	1.000				
	CFSSA	156	-8	-10	-12	-14	-16	-18	-20	-24	-28	-32	.188	.212	.141	.250
	CFSSC															
	CFSSS															

Dimensions & Specifications

METRIC (mm)	Series	Top Panel Mounting Hole Diameter Code	Length L ± 0.13 mm (Length Code is in millimeters)									B ± .13	C Max.	D ± .13	H ± .13
			8	10	12	14	16	18	20	22	25				
	CFSSA	4mm	-8	-10	-12	-14	-16	-18	-20	-22	-25	4.77	5.38	3.58	6.35
	CFSSC														
	CFSSS														

Continued on next page.



Spring-Top Standoffs

Series CFSSA, CFSSS & CFSSC



Continued from previous page.

Installation & Performance Data

	Bottom Panel						Top Panel			
	Bottom Mounting Hole +.003 -.000	Material	Hardness Max.	Thickness Min.	Location Tolerance Min.	Max.	Top Mounting Hole +.003 -.000	Material	Thickness Range	Min.
INCH (in.)	CFSSA	Metal	HRB50	.040	.260	± .005	.156	P-C board or metal	.040- .070	.100
	CFSSS		HRB60	.040	.260	± .005	.156			.100
	CFSSC		HRB70	.040	.260	± .005	.156			.100

Installation & Performance Data

	Fixed Panel			Removable Panel			
	Sheet Thickness & Sheet Material	Installation (lbs.)	Pushout (lbs.)	Max. first on force (lbs.)	Min. first off force (lbs.)	Min. 15th off force (lbs.)	
INCH (in.)	CFSSA	.040 Aluminum HRB 25	1500	200	10	3.0	1.0
	CFSSS	.040 Aluminum HRB 25	1500	200	20	6.0	2.0
	CFSSC	.060 Cold-rolled Steel HRB 64	3600	600	20	6.0	2.0

Installation & Performance Data

	Bottom Panel						Top Panel			
	Bottom Mounting Hole +.08 -.00	Material	Hardness Max.	Thickness Min.	Location Tolerance Min.	Max.	Top Mounting Hole +.08 -.00	Material	Thickness Range	Min.
METRIC (mm)	CFSSA	Metal	HRB50	1	6.6	± .013	4.0	P-C board or metal	1- 1.8	2.5
	CFSSS		HRB60	1	6.6	± .013	4.0			2.5
	CFSSC		HRB70	1	6.6	± .013	4.0			2.5

Installation & Performance Data

	Fixed Panel			Removable Panel			
	Sheet Thickness & Sheet Material	Installation (kN)	Pushout (N)	Max. first on force (N)	Min. first off force (N)	Min. 15th off force (N)	
METRIC (mm)	CFSSA	1.0 Aluminum HRB 25	6.7	880	44	13	4.0
	CFSSS	1.0 Aluminum HRB 25	6.7	880	89	27	9.0
	CFSSC	1.52 Cold-rolled Steel HRB 64	16	2670	89	27	9.0