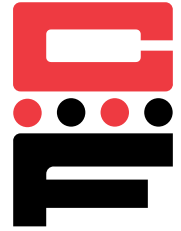




# Self-Clinching Slide-Top Standoffs

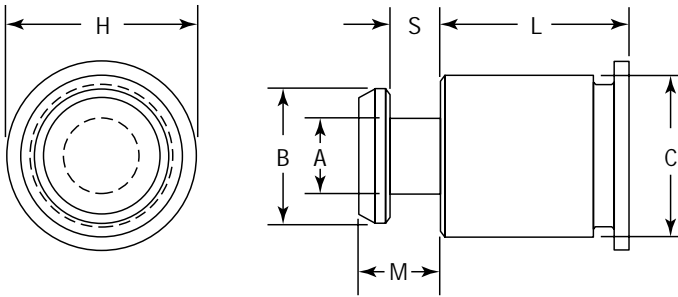
## Series CFSKC



CFSKC slide-top standoffs are designed for a P-C board or panel to be quickly attached and removed with a simple sliding motion. The slide-top standoffs provide advantages for reducing servicing time and eliminate the problems associated with loose hardware. Several slide-top standoffs can be used in conjunction with a Captive threaded standoff to lock the board in place.

Series	Material	Finish
CFSKC	300 Series Stainless Steel	Passivated ASTM A380

Use in: Materials HRB-70 or less.



Part Number Structure:

CFSKC 6060-6



### Dimensions & Specifications

INCH (in.)	Series	Body/ Hole Code	L Length $\pm .005$ Length Code is in 32nds of an Inch										A	B	C	S	M	H	D Anvil Hole + .003 - .000	
			.188	.250	.312	.375	.437	.500	.562	.625	.750	.875	1.00	$\pm .003$	$\pm .003$	Max.	$\pm .003$	Max.	Nom.	
			6	8	10	12	14	16	18	20	22	24	28	32						
	CFSKC	6060	-6	-8	-10	-12	-14	-16	-18	-20	-24	-28	-32	.099	.177	.212	.068	.108	.250	.216

### Dimensions & Specifications

METRIC (mm)	Series	Body/ Hole Code	L Length $\pm 0.13$										A	B	C	S	M	H	D Anvil Hole + 0.08 - 0.00
			6	8	10	12	14	16	18	20	22	25	$\pm 0.08$	$\pm 0.08$	Max.	$\pm 0.08$	Max.	Nom.	
			6	8	10	12	14	16	18	20*	22*	25*							
	CFSKC	61.5	-6	-8	-10	-12	-14	-16	-18	-20*	-22*	-25*	2.5	4.5	5.38	1.72	2.75	6.35	5.5

\*Not stocked, available on special order.

### Installation & Performance Data

Body Size/ Hole Code	.060 in. (1.52mm) 5052-H34 Aluminum		.060 in. (1.52mm) Cold-rolled Steel	
	Installation (lbs.)	Pushout (lbs.)	Installation (lbs.)	Pushout (lbs.)
6060	1600	250	3200	600
	(kN)	(N)	(kN)	(N)
61.5	7.1	1100	14.2	2600

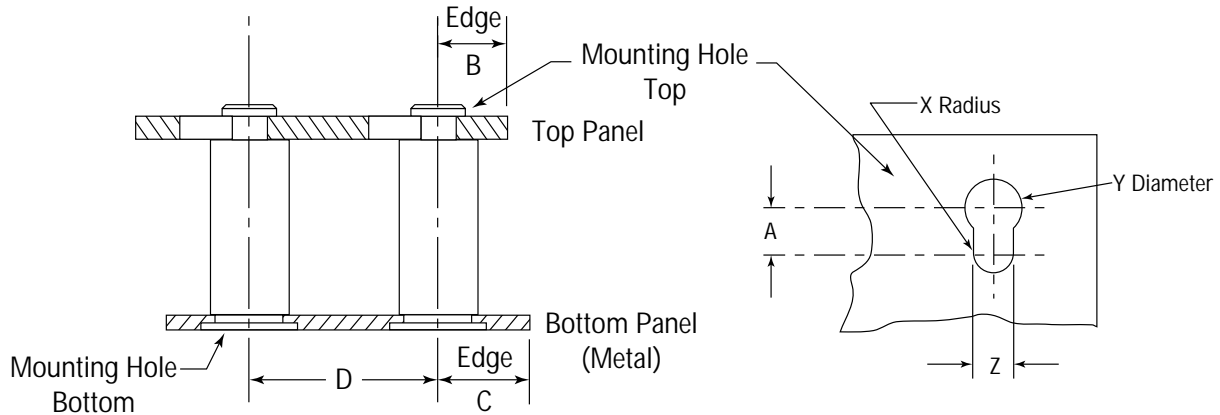
Continued on next page.



# Self-Clinching Slide-Top Standoffs Series CFSKC



Continued from previous page.



## Installation & Performance Data

INCH (in.)	BOTTOM PANEL					TOP PANEL						
	Series	Bottom Mounting Hole +.003 -.000	Min.	C Min.	Location Tolerance Max.	Top Mounting Hole				Material	Thickness Range	Min.
						X Nom.	Y ± .003	Z ± .003	A Min.			
CFSKC	.213	.040	.260	± .005	.059	.197	.118	.148	PC Board or Metal	.057 - .064	.160	

## Installation & Performance Data

METRIC (mm)	BOTTOM PANEL					TOP PANEL						
	Series	Bottom Mounting Hole +0.08 -.000	Min.	C Min.	Location Tolerance Max.	Top Mounting Hole				Material	Thickness Range	Min.
						X Nom.	Y ± 0.08	Z ± 0.08	A Min.			
CFSKC	5.4	1.0	6.6	± 0.13	1.5	5.0	3.0	3.75	PC Board or Metal	1.45 - 1.62	4.1	