



# Spring-Top Standoffs

## Series CFKSSB



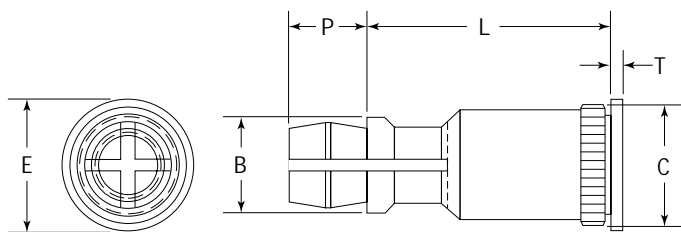
CFKSSB spring-top standoffs are designed for permanent installation into P-C boards by pressing into a drilled or punched hole. The spring-action post provides quick attachment and removal of P-C boards, with a simple snap eliminating the problems associated with loose hardware.

Material: CDA-360 Brass.  
 Finish: None.  
 Use in: P-C Boards;  
 HRB-65 Max. Hardness.

Part Number Structure:

CFKSSB 156-8

Length Code  
 Hole Diameter  
 Series



### Dimensions & Specifications

INCH (in.)	Series	Top Board Mounting Hole Diameter Code	Length L ± .005 (Length Code In 32nds Of An Inch)										B ± .005	C Max	E ± .005	P ± .005	T ± .005
			.250	.312	.375	.437	.500	.562	.625	.750	.875	1.000					
	CFKSSB	156	-8	-10	-12	-14	-16	-18	-20	-24	-28	-32	.188	.228	.250	.141	.020

### Dimensions & Specifications

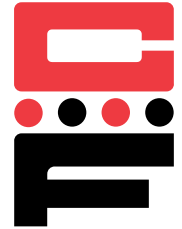
METRIC (mm)	Series	Top Board Mounting Hole Diameter Code	Length L ± 0.13 (Length Code In Millimeters)									B ± .13	C Max	E ± .13	P ± .13	T ± .13
			8	10	12	14	16	18	20	22	25					
	CFKSSB	4	-8	-10	-12	-14	-16	-18	-20	-22	-25	4.77	5.74	6.35	3.58	0.51

Continued on next page.



# Spring-Top Standoffs

## Series CFKSSB



Continued from previous page.

<i>Installation &amp; Performance Data</i>											
INCH (in.)	Series	Bottom Panel					Top Panel				
		Bottom Mounting Hole +.003 -.000	Material	Hardness Max.	Thickness Min.	Location Tolerance Min. Max.	Top Mounting Hole +.003 -.000	Material	Thickness Range	Min.	
CFKSSB	.213	P-C Board	HRB65	.050	.220	± .005	.156	P-C board or metal	.040-.070	.100	

<i>Installation &amp; Performance Data</i>							
INCH (in.)	Type	Fixed Panel			Removable Panel		
		Sheet Thickness & Sheet Material	Installation (lbs.)	Pushout (lbs.)	Max. first on force (lbs.)	Min. first off force (lbs.)	Min. 15th off force (lbs.)
CFKSSB	.060 FR-4 Fiberglass	500	110	13	3.0	1.0	

<i>Installation &amp; Performance Data</i>											
METRIC (mm)	Series	Bottom Panel					Top Panel				
		Bottom Mounting Hole +.08 -.00	Material	Hardness Max.	Thickness Min.	Location Tolerance Min. Max.	Top Mounting Hole +.08 -.00	Material	Thickness Range	Min.	
CFKSSB	5.4	P-C Board	HRB65	1.25	5.6	± .013	4.0	P-C board or metal	1-1.8	2.5	

<i>Installation &amp; Performance Data</i>							
METRIC (mm)	Type	Fixed Panel			Removable Panel		
		Sheet Thickness & Sheet Material	Installation (kN)	Pushout (N)	Max. first on force (N)	Min. first off force (N)	Min. 15th off force (N)
CFKSSB	1.52 FR-4 Fiberglass	2.2	484	58	13	4.0	