

Light Pipes



Vertical & Panel Light Pipes

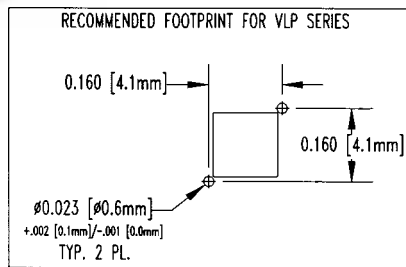
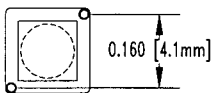
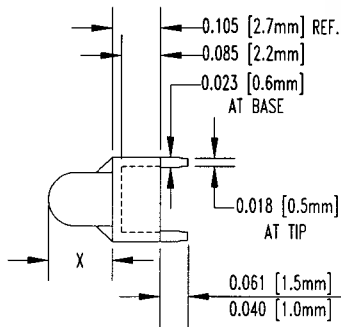
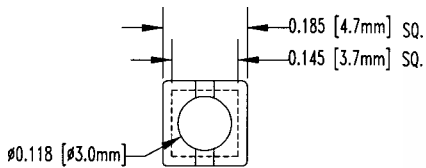


- **Protect Circuits From ESD**
- **Use With BivarOpto SM Series LEDs**
- **Round Or Flat Face Options**

Light pipes are ideally suited for applications where light from a SMD LED is carried directly to a front panel or enclosure. Light pipes protect circuits from accidental damage from ESD by isolating the PCB from potential contact.

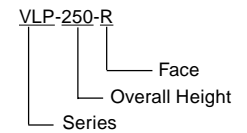
VLP SERIES

Vertical Light Pipes, Color: Clear



PART NO.	OVERALL HEIGHT	X = HEIGHT	FACE	PRICE CODE
VLP-200-R	0.200 (5.1)	0.095 (2.4)	R = Round	G
VLP-250-R	0.250 (6.4)	0.145 (3.7)	F = Flat	G
VLP-300-R	0.300 (7.6)	0.195 (5.0)		G
VLP-350-R	0.350 (8.9)	0.245 (6.2)		H
VLP-400-R	0.400 (10.2)	0.295 (7.5)		H
VLP-450-R	0.450 (11.4)	0.345 (8.8)		H
VLP-500-R	0.500 (12.7)	0.395 (10.0)		H
VLP-550-R	0.550 (13.9)	0.445 (11.5)		I

EXAMPLES:



Material Specifications:

Clear Polycarbonate

Oxygen Rating Index: Over 28%

Standard Drawing Tolerances, unless otherwise indicated:

Fractions	± 1/64 [.40]
.X	± 1/64 [.40]
.XX	± .010 [.254]
.XXX	± .005 [.127]

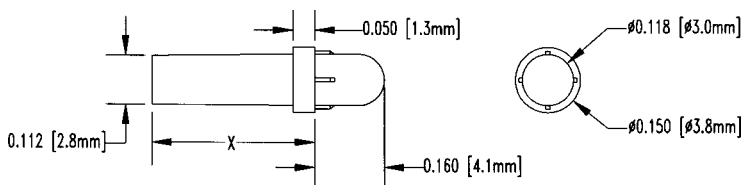


PLP 1 SERIES

Panel Light Pipes, Color: See Chart

- **PLP1 Series Panel Light Pipes Press Into A 0.119 - 0.123" Hole**

- **C103-SR For Added Retention & Contrast, See Page 62.**



PART NO.	X = LENGTH	FACE	PRICE CODE
PLP1-125	0.125 (3.2)	R = Round	E
PLP1-250	0.250 (6.4)		E
PLP1-350	0.350 (8.9)		E
PLP1-375	0.375 (9.5)		E
PLP1-500	0.500 (12.7)		E
PLP1-625	0.625 (15.9)		E
PLP1-750	0.750 (19.0)		E

Colors:

XX = Clear unless specified

Red = RD
Green = GN
Blue = BE
Yellow = YW

E
L
L
L
L

EXAMPLES:

