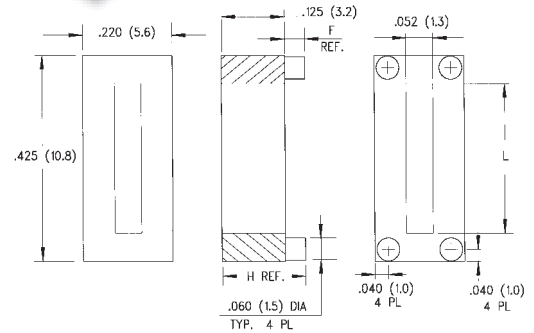
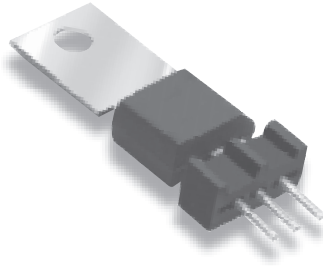


## Molded Power Transistor Mounts

### TO202/TO-220

Colors: Black & White Price Code: I

PART NO.	H	F	L	COLOR
423-125	.125 (3.2)	.000	.255 (6.5)	Black
423-150	.150 (3.8)	.025 (.64)	.255 (6.5)	Black
423-175	.175 (4.4)	.050 (1.3)	.255 (6.5)	Black
423-200	.200 (5.1)	.075 (1.9)	.255 (6.5)	Black
424-125	.125 (3.2)	.000	.280 (7.1)	White
424-150	.150 (3.8)	.025 (.64)	.280 (7.1)	White
424-175	.175 (4.4)	.050 (1.3)	.280 (7.1)	White
424-200	.200 (5.1)	.075 (1.9)	.280 (7.1)	White



### TO-219

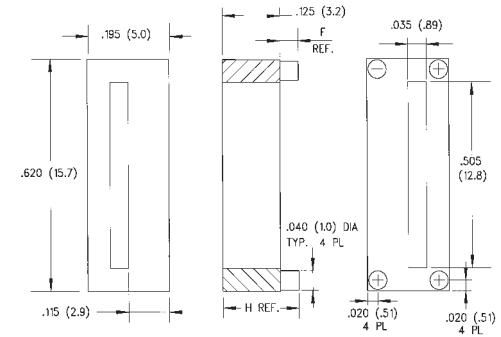
Color: Black Price Code: J

PART NO.	H	F
422-125	.125 (3.2)	.000
422-150	.150 (3.8)	.025 (.64)
422-175	.175 (4.4)	.050 (1.3)
422-200	.200 (5.1)	.075 (1.9)

**Material Specifications:**  
Nylon, per ASTM D 4066 PA111  
U.L. Rated 94V-2



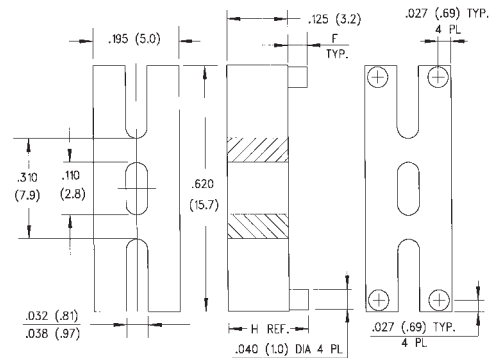
**Oxygen Rating Index:** Over 28%  
**Standard Drawing Tolerances,** unless otherwise indicated:  
Fractions:  $\pm 1/64$  (.40)  
.X  $\pm 1/64$  (.40) .XX  $\pm .010$  (.254) .XXX  $\pm .005$  (.127)



### TO-247

Color: Black Price Code: J

PART NO.	H	F
426-125	.125 (3.2)	.000
426-150	.150 (3.8)	.025 (.64)
426-175	.175 (4.4)	.050 (1.3)
426-200	.200 (5.1)	.075 (1.9)



## Extruded Power Transistor Mounts

- Standard lengths from .030"-.750"(.76-19.1) in .005"(.13) increments.
- Made from semi-rigid PVC U.L. rated material.



### EPMH Series

Color: Natural

PART NO.	PRICE "H" DIMENSIONS	CODE
EPMH-030 thru EPMH-075	.030-.075 (.76-1.9)	W
EPMH-080 thru EPMH-150	.080-.150 (2.0-3.8)	X
EPMH-155 thru EPMH-230	.155-.230 (4.0-5.8)	Y
EPMH-235 thru EPMH-310	.235-.310 (6.0-7.9)	Z
EPMH-315 thru EPMH-380	.315-.380 (8.0-9.7)	ZZ
EPMH-385 thru EPMH-495	.385-.495 (9.8-12.6)	ZZZ
EPMH-500 thru EPMH-750	.500-.750 (12.7-19.1)	ZZZZ

Tolerances: O.D. + .005 (.13), I.D.  $\pm$  .005 (.13)  
"H" Dim.: .030-.500 (.76-12.7) is  $\pm$  .005 (.13)  
"H" Dim.: .500-.750 (12.7-19.1) is  $\pm$  .008 (.20)

