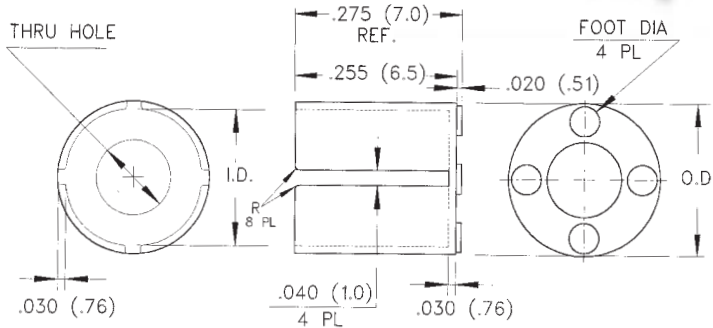




Assembly Hardware

ECM: Electrolytic Capacitor Mounts

- Works with 5mm through 35mm industry standard electrolytic capacitors.
- Insulates and protects leads.
- Prevents shorting under shock and vibration.



ECM Series

Color: Natural

PART NO.	EC TYPE	I.D.	O.D.	THRU HOLE	FOOT DIA.	PRICE CODE
ECM-1	5	.227 (5.8)	.287 (7.3)	.125 (3.2)	.060 (1.5)	A
ECM-2	6-6.3	.273 (6.9)	.333 (8.5)	.150 (3.8)	.070 (1.8)	B
ECM-3	8	.345 (8.8)	.405 (10.3)	.225 (5.7)	.070 (1.8)	F
ECM-4	10	.424 (10.8)	.484 (12.3)	.250 (6.4)	.100 (2.5)	F
ECM-5	12.5-13	.542 (13.8)	.602 (15.3)	.350 (8.9)	.105 (2.7)	G
ECM-6	16	.660 (16.8)	.720 (18.3)	.350 (8.9)	.106 (2.7)	G
ECM-7	18	.738 (18.7)	.798 (20.3)	.350 (8.9)	.106 (2.7)	H
ECM-8	20	.817 (20.8)	.877 (22.3)	.441 (11.2)	.118 (3.0)	H
ECM-9	22	.896 (22.8)	.956 (24.3)	.449 (11.4)	.118 (3.0)	I
ECM-10	25	1.008 (25.6)	1.074 (27.3)	.547 (13.9)	.138 (3.5)	I
ECM-11	25.5	1.030 (26.2)	1.090 (27.7)	.547 (13.9)	.138 (3.5)	J
ECM-12	30	1.210 (30.5)	1.270 (32.3)	.645 (16.4)	.138 (3.5)	K
ECM-13	35	1.410 (35.8)	1.470 (37.3)	.645 (16.4)	.138 (3.5)	C



Material Specifications:

Nylon, per ASTM D 4066 PA111, U.L. Rated 94V-2



Oxygen Rating Index: Over 28%

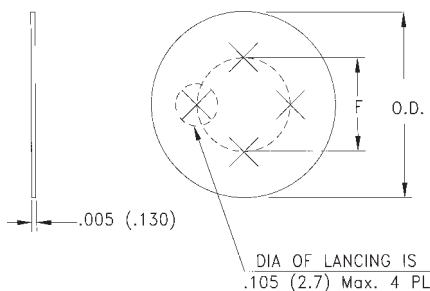
Standard Drawing Tolerances, unless otherwise indicated:

Fractions: = ± 1/64 (.40)

.X = ± 1/64 (.40) .XX = ± .010 (.254) .XXX = ± .005 (.127)

ECI: Electrolytic Capacitor Insulators

- Self-retaining.
- Insulates and allows circuitry beneath capacitor.
- Transparent, tough & temperature resistant.



ECI Series

Color: Clear

PART NO.	CASE STYLE	O.D. ±.005	F	USE WITH
ECI-1	I	.710 (18.0)	.394 (10.0)	30
ECI-2	II	.830 (21.0)	.394 (10.0)	22, 25, 35

Material Specifications:

Dupont, Mylar EL-21 with U.L. Rated 94V-2



Oxygen Rating Index: Over 21.1%

Standard Drawing Tolerances, unless otherwise indicated:

Fractions: = ± 1/64 (.40)

.X = ± 1/64 (.40) .XX = ± .010 (.254) .XXX = ± .005 (.127)